



2" ROUND DEEP DOWNLIGHT 2000 LUMENS MAX

UNIVERSAL HOUSINGS WITH INTERCHANGEABLE TRIMS

Spectrum's A Spec 2" recessed round downlight series features a 2" regressed trim and variety of options for accent and general illumination.

LUMENS AND WATTAGE CHART					
PART NUMBER	LUMENS	SOURCE LUMENS ¹	DELIVERED LUMENS ²	SYSTEM WATTS	LPW
RDD2F	XT10L	1000	691	11.1	62
RDD2F	XT13L	1300	930	15.0	62
RDD2F	XT20L	2000	1431	23.7	60

PROJECT: _____
TYPE: _____

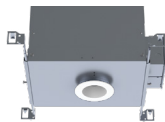


AVAILABLE HOUSING TYPES

SR2DMO - New Construction / 20L Max



SR2DMI - IC New Construction / 13L Max



SR2DMR - Remodel Construction / 20L Max



FIXTURE HOUSING SPECIFICATION

SERIES	LUMENS ¹	DRIVER / DIMMING / VOLTAGE	OPTIONS
SR2DMO New Construction	XT10L 1000 Lm	E Electronic Driver DS10 10%, 0-10V DS2W1 ELV/MLV, 120V BLU Bluetooth LE	H12² 12" - 24" Expandable Bars EB Black Housing EMRM Remote Emergency Battery Pack
SR2DMI³ IC New Construction	XT13L 1300 Lm		
SR2DMR Remodel Construction	XT20L 2000 Lm		
	XN BEAM		
	XN10L 1000 Lm		
	XN13L⁴ 1300 Lm		

- Die-cast aluminum trim with a wide variety of options.
- Deep regressed trim.
- Universal housing accepts all trim types.
- Performance Xicato LED module for superior reliability and color consistency.
- Interchangeable optics and lenses.
- 5 year warranty on fixture and electronics.
- 10 year warranty on LED CCT.
- Bluetooth LE option.
- Sustainable fixture.
- Zhaga International Standard LED Module for future upgrades.
- 83CRI 2SDCM, 98CRI 1x2SDCM best in industry.

AVAILABLE TRIM / MODULE TYPES



TRIM / MODULE SPECIFICATION

TRIM	CCT	OPTICS	TRIM FINISH ⁷	OPTIONS	
RDD2F Downlight	83 CRI	XN⁶ 16° MD 30° WD 40°	MW⁸ Matte White MB Matte Black PT Platinum Silver BZ Bronze CH Charcoal OB Oil Rubbed Bronze AS Sapphire AM Malachite SN Sun Gold CO Copper Metallic GH Graphite CC⁹ Custom Color	NL No Lens GL¹⁰ Clear Glass Lens SO Micro Prism Solite™ Lens FG Frosted Glass Lens WF¹¹ White Flange	
	27K 2700K				
	30K 3000K				
	35K 3500K				
	40K 4000K				
	98 CRI ARTIST				
	27HK 2700K				
	30HK 3000K				
	35HK 3500K				
	40HK 4000K				



EXAMPLE: SR2DMOXT10LDS2W1/H12/RDD2F27KMDCHNL

NOTES:

1 Nominal Source Lumens at Any CCT 2 Nominal Delivered Lumens 83 CRI at Any CCT with MD-MW-GL Trim 3 IC New Construction not Available in XN Beam or XT20L
4 Not Available with HK 5 Standard Bar Hanger 6 9mm, 13L Max. All XN Draw More Watts Than Other Optics; See Photometry 7 Inside Trim And Flange Will Match Color Specified 8 Standard Finish 9 Contact Factory for Special Finishes 10 Standard Lens 11 Otherwise Flange Is Same Color As Interior Of Trim

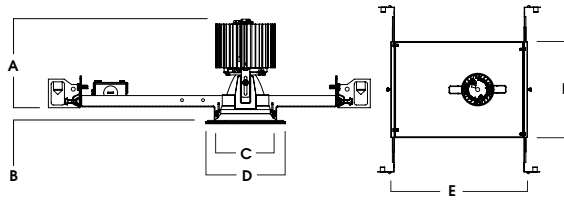
Dimensions and values shown are nominal. Spectrum Lighting continually works to improve products and reserves the right to make changes which may alter the performance or appearance of products.



HOUSING DIMENSIONS

SR2DMO - NEW CONSTRUCTION / 20L MAX

Non-IC rated, thermally protected frame-in kit for new construction. Non-IC designation requires insulation must be minimum of 3" from housing.



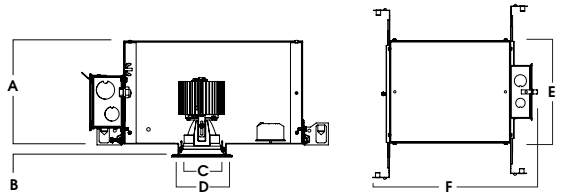
A	B	C	D	E	F
4.0	.625	1.8	3.7	12.9	9.1
101.6 mm	15.2 mm	45.7 mm	93.98 mm	327.7 mm	231.1 mm

Fixture Weight: 4.0 lbs

Ceiling Cutout: Ø 3"

SR2DMI - IC NEW CONSTRUCTION / 13L MAX

IC rated frame-in kit for new construction with direct insulation contact and CCEA (Chicago Plenum) compatibility.



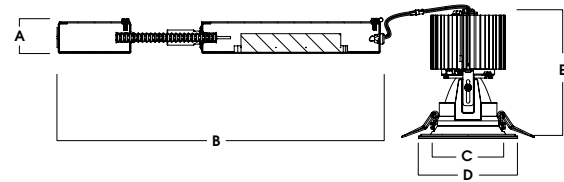
A	B	C	D	E	F
6.4	.625	1.8	3.7	9.8	15.4
162.6 mm	15.2 mm	45.7 mm	93.98 mm	248.9 mm	391.2 mm

Fixture Weight: 5.0 lbs

Ceiling Cutout: Ø 3"

SR2DMR - REMODEL CONSTRUCTION / 20L MAX

Non-IC rated frame-in kit for existing construction. Non-IC designation requires insulation must be minimum of 3" from housing.



A	B	C	D	E
1.5	13.9	1.8	3.7	4.6
38.1 mm	353.1 mm	45.7 mm	93.98 mm	116.8 mm

Fixture Weight: 2.0 lbs

Ceiling Cutout: Ø 3"

FEATURES

NEW CONSTRUCTION

Precision Die-formed 20 gauge galvanized steel housing and integral junction box with (1) 7/8" knockout for Non-IC (not designed for through branch circuit wiring) and (1) 5/8", (3) 7/8" and 2 (1") knockouts for IC. Junction box capacity: 8 12AWG rated for 90 °C. Tool-less driver and junction box access for ease of maintenance. Posi-loc trim retention springs for 5/8"-1" ceiling thickness. For thicker ceilings consult factory.

REMODEL CONSTRUCTION

Features tethered power supply and junction box with sheathed wire, (1) 7/8" knockout, and (1) 5/8" Knockout.

MOUNTING

A variety of mounting bars are available (excluding remodel). Ceiling materials must be rigid to support luminaire frame.

DRIVER

Several constant current dimming drivers are available. Power factor >.9 typical, 50/60Hz, 350-1050mA.

TRIM

Self-flanged, one-piece, die-cast aluminum finished in a variety of powdercoat options. Inside trim and flange are finished in same color unless otherwise specified (WF= White Flange).

LUMEN OUTPUT

Optics maintain 1000-2000 lumens range.

LED

Zhaga compatible high performance Xicato module. Proprietary phosphor technology provides consistent and stable color with CCT control of +/- 100K over life of light engine.

EMERGENCY

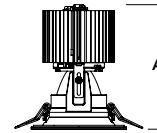
Remote 7W emergency battery options are available. Operates for 90 minutes and produces nominal 450 lumens.

BLUETOOTH

Integral Bluetooth LE option is available for dimming to .1%, grouping, remote access, electrical feedback and beacon technology.

TRIM / MODULE DATA

RDD2F - DOWNLIGHT MODULE



Lm	A
XT10L	3.6
XT13L	3.6
XT20L	4.6



PHOTOMETRIC DATA - 2" ROUND DEEP

SR2DMO-XT20L-E1-RDD2F-xxK-MD-MW-NL

CANDLEPOWER CURVE	INTENSITY	ZONAL LUMENS	SINGLE UNIT: PERFORMANCE INITIAL FOOTCANDLES BASED ON IES BEAM ANGLE				MULTIPLE UNITS: PERFORMANCE 80/50/20% REFLECTANCES INITIAL FOOTCANDLES AND WATTS PER SQUARE FOOT							
			Mounting Height AFF	FC at Center on Floor	Beam Diameter	FC at Beam Edge	Ceiling Height	Fixture Spacing	RCR 3		RCR 5			
	0.00°	0° - 10°	384	25%	5.50'	148 fc	3.2'	74 fc	8'	3'	181	2.79	256	4.35
	0.00° 4,462	0° - 20°	1,037	67%	6.50'	106 fc	3.8'	53 fc	12'	5''	61	0.95	56	0.95
	5.00° 4,285	0° - 30°	1,380	89%	7.50'	79 fc	4.4'	40 fc	16'	7''	38	0.58	24	0.40
	10.00° 3,601	0° - 40°	1,451	93%	8.50'	62 fc	5.0'	31 fc	Delivered Illuminance Rating: (DIR)					
	15.00° 2,573	0° - 60°	1,522	98%	10.00'	45 fc	5.8'	22 fc	2' Suspension Length					
	20.00° 1,565	0° - 80°	1,555	100%	12.00'	31 fc	7.0'	15 fc	Square rooms used for multiple units:					
	30.00° 344	0° - 90°	1,558	100%	14.00'	23 fc	8.2'	11 fc	- RCR 3: Length & Width = Ceiling Ht. - 4.5' x 3.33					
	40.00° 53	Total	1,558	100%	16.00'	17 fc	9.4'	9 fc	- RCR 5: Length & Width = Ceiling Ht. - 4.5' x 2.00					
	50.00° 45										* Average Footcandles at 2.5' Above Floor			
	60.00° 34										* Exceeds spacing criteria by 56%			
	70.00° 16										** Exceeds spacing criteria by 21%			
	80.00° 5										*** Exceeds spacing criteria by 11%			
	90.00° 1													

Delivered Lumens: 1,558
 Luminaire Watts: 23.7
 LER: 65.74

CP at 0deg (Nadir): 4,462
 CRI: 83

Beam Angle: 31.31
 Spacing Ratio: 0.55

Lamp Multiplier: 10L x 0.48, 13L x 0.65
 CCT Multiplier: LEDXT lumen output is the same for all available CCTs

SR2DMO-XT20L-E1-RDD2F-xxK-MD-MW-GL

CANDLEPOWER CURVE	INTENSITY	ZONAL LUMENS	SINGLE UNIT: PERFORMANCE INITIAL FOOTCANDLES BASED ON IES BEAM ANGLE				MULTIPLE UNITS: PERFORMANCE 80/50/20% REFLECTANCES INITIAL FOOTCANDLES AND WATTS PER SQUARE FOOT							
			Mounting Height AFF	FC at Center on Floor	Beam Diameter	FC at Beam Edge	Ceiling Height	Fixture Spacing	RCR 3		RCR 5			
	0.00°	0° - 10°	352	25%	5.50'	135 fc	3.1'	67 fc	8'	3'	165	2.79	234	4.35
	0.00° 4,085	0° - 20°	951	67%	6.50'	97 fc	3.7'	48 fc	12'	5''	56	0.95	51	0.95
	5.00° 3,872	0° - 30°	1,255	88%	7.50'	73 fc	4.3'	36 fc	16'	7''	34	0.58	22	0.40
	10.00° 3,200	0° - 40°	1,320	93%	8.50'	57 fc	4.9'	28 fc	Delivered Illuminance Rating: (DIR)					
	15.00° 2,219	0° - 60°	1,393	98%	10.00'	41 fc	5.7'	20 fc	2' Suspension Length					
	20.00° 1,293	0° - 80°	1,423	100%	12.00'	28 fc	6.8'	14 fc	Square rooms used for multiple units:					
	30.00° 227	0° - 90°	1,425	100%	14.00'	21 fc	8.0'	10 fc	- RCR 3: Length & Width = Ceiling Ht. - 4.5' x 3.33					
	40.00° 55	Total	1,426	100%	16.00'	16 fc	9.1'	8 fc	- RCR 5: Length & Width = Ceiling Ht. - 4.5' x 2.00					
	50.00° 44										* Average Footcandles at 2.5' Above Floor			
	60.00° 29										* Exceeds spacing criteria by 62%			
	70.00° 12										** Exceeds spacing criteria by 26%			
	80.00° 4										*** Exceeds spacing criteria by 15%			
	90.00° 0													

Delivered Lumens: 1,426
 Luminaire Watts: 23.7
 LER: 60.17

CP at 0deg (Nadir): 4,085
 CRI: 83

Beam Angle: 31.79
 Spacing Ratio: 0.53

Lamp Multiplier: 10L x 0.48, 13L x 0.65
 CCT Multiplier: LEDXT lumen output is the same for all available CCTs

SR2DMO-XT20L-E1-RDD2F-xxK-MD-MW-SO

CANDLEPOWER CURVE	INTENSITY	ZONAL LUMENS	SINGLE UNIT: PERFORMANCE INITIAL FOOTCANDLES BASED ON IES BEAM ANGLE				MULTIPLE UNITS: PERFORMANCE 80/50/20% REFLECTANCES INITIAL FOOTCANDLES AND WATTS PER SQUARE FOOT							
			Mounting Height AFF	FC at Center on Floor	Beam Diameter	FC at Beam Edge	Ceiling Height	Fixture Spacing	RCR 3		RCR 5			
	0.00°	0° - 10°	327	23%	5.50'	127 fc	3.2'	63 fc	8'	3'	166	2.79	234	4.35
	0.00° 3,828	0° - 20°	905	63%	6.50'	91 fc	3.8'	45 fc	12'	5''	57	0.95	51	0.95
	5.00° 3,597	0° - 30°	1,233	85%	7.50'	68 fc	4.4'	34 fc	16'	7''	35	0.58	22	0.40
	10.00° 2,970	0° - 40°	1,318	91%	8.50'	53 fc	5.0'	26 fc	Delivered Illuminance Rating: (DIR)					
	15.00° 2,147	0° - 60°	1,407	97%	10.00'	38 fc	5.9'	19 fc	2' Suspension Length					
	20.00° 1,361	0° - 80°	1,443	100%	12.00'	27 fc	7.0'	13 fc	Square rooms used for multiple units:					
	30.00° 323	0° - 90°	1,446	100%	14.00'	20 fc	8.2'	10 fc	- RCR 3: Length & Width = Ceiling Ht. - 4.5' x 3.33					
	40.00° 74	Total	1,446	100%	16.00'	15 fc	9.4'	7 fc	- RCR 5: Length & Width = Ceiling Ht. - 4.5' x 2.00					
	50.00° 54										* Average Footcandles at 2.5' Above Floor			
	60.00° 39										* Exceeds spacing criteria by 59%			
	70.00° 16										** Exceeds spacing criteria by 23%			
	80.00° 4										*** Exceeds spacing criteria by 13%			
	90.00° 1													

Delivered Lumens: 1,446
 Luminaire Watts: 23.7
 LER: 61.01

CP at 0deg (Nadir): 3,828
 CRI: 83

Beam Angle: 32.75
 Spacing Ratio: 0.54

Lamp Multiplier: 10L x 0.48, 13L x 0.65
 CCT Multiplier: LEDXT lumen output is the same for all available CCTs



PHOTOMETRIC DATA - 2" ROUND DEEP

SR2DMO-XT20L-E1-RDD2F-xxK-WD-MW-NL

CANDLEPOWER CURVE	INTENSITY	ZONAL LUMENS	SINGLE UNIT: PERFORMANCE INITIAL FOOTCANDLES BASED ON IES BEAM ANGLE				MULTIPLE UNITS: PERFORMANCE 80/50/20% REFLECTANCES INITIAL FOOTCANDLES AND WATTS PER SQUARE FOOT									
			Mounting Height AFF	FC at Center on Floor	Beam Diameter	FC at Beam Edge	Ceiling Height	Fixture Spacing	RCR 3		RCR 5					
	0.00°	0° - 10°	249	16%	5.50'	95 fc	3.9'	48 fc	8'	4'	98	1.57	107	1.93		
	0.00° 2,889	0° - 20°	762	49%	6.50'	68 fc	4.7'	34 fc	12'	6'	38	0.61	52	0.95		
	5.00° 2,730	0° - 30°	1,204	78%	7.50'	51 fc	5.4'	26 fc	16'	8'	25	0.40	22	0.40		
	10.00° 2,341	0° - 40°	1,395	90%	8.50'	40 fc	6.1'	20 fc	Delivered Illuminance Rating: (DIR)							
	15.00° 1,878	0° - 60°	1,499	97%	10.00'	29 fc	7.2'	14 fc	2' Suspension Length							
	20.00° 1,418	0° - 80°	1,548	100%	12.00'	20 fc	8.6'	10 fc	Square rooms used for multiple units:							
	30.00° 581	0° - 90°	1,552	100%	14.00'	15 fc	10.0'	7 fc	- RCR 3: Length & Width = Ceiling Ht. - 4.5' x 3.33							
	40.00° 126	Total	1,552	100%	16.00'	11 fc	11.5'	6 fc	- RCR 5: Length & Width = Ceiling Ht. - 4.5' x 2.00							
	50.00° 62	* Average Footcandles at 2.5' Above Floor														
	60.00° 45	* Exceeds spacing criteria by 84%														
	70.00° 23	** Exceeds spacing criteria by 29%														
	80.00° 7	*** Exceeds spacing criteria by 12%														
	90.00° 0															
	Delivered Lumens: 1,552		CP at 0deg (Nadir): 2,889		Beam Angle: 39.39		Lamp Multiplier: 10L x 0.48, 13L x 0.65									
	Luminaire Watts: 23.7		CRI: 83		Spacing Ratio: 0.62		CCT Multiplier: LEDXT lumen output is the same for all available CCT's									
	LER: 65.49															

SR2DMO-XT20L-E1-RDD2F-xxK-WD-MW-GL

CANDLEPOWER CURVE	INTENSITY	ZONAL LUMENS	SINGLE UNIT: PERFORMANCE INITIAL FOOTCANDLES BASED ON IES BEAM ANGLE				MULTIPLE UNITS: PERFORMANCE 80/50/20% REFLECTANCES INITIAL FOOTCANDLES AND WATTS PER SQUARE FOOT									
			Mounting Height AFF	FC at Center on Floor	Beam Diameter	FC at Beam Edge	Ceiling Height	Fixture Spacing	RCR 3		RCR 5					
	0.00°	0° - 10°	225	16%	5.50'	86 fc	3.9'	43 fc	8'	4'	89	1.57	97	1.93		
	0.00° 2,606	0° - 20°	689	49%	6.50'	62 fc	4.6'	31 fc	12'	6'	34	0.61	47	0.95		
	5.00° 2,474	0° - 30°	1,080	77%	7.50'	46 fc	5.3'	23 fc	16'	8'	23	0.40	20	0.40		
	10.00° 2,129	0° - 40°	1,249	89%	8.50'	36 fc	6.1'	18 fc	Delivered Illuminance Rating: (DIR)							
	15.00° 1,706	0° - 60°	1,358	96%	10.00'	26 fc	7.1'	13 fc	2' Suspension Length							
	20.00° 1,275	0° - 80°	1,404	100%	12.00'	18 fc	8.6'	9 fc	Square rooms used for multiple units:							
	30.00° 512	0° - 90°	1,408	100%	14.00'	13 fc	10.0'	7 fc	- RCR 3: Length & Width = Ceiling Ht. - 4.5' x 3.33							
	40.00° 121	Total	1,408	100%	16.00'	10 fc	11.4'	5 fc	- RCR 5: Length & Width = Ceiling Ht. - 4.5' x 2.00							
	50.00° 65	* Average Footcandles at 2.5' Above Floor														
	60.00° 44	* Exceeds spacing criteria by 84%														
	70.00° 22	** Exceeds spacing criteria by 29%														
	80.00° 6	*** Exceeds spacing criteria by 12%														
	90.00° 0															
	Delivered Lumens: 1,408		CP at 0deg (Nadir): 2,606		Beam Angle: 39.33		Lamp Multiplier: 10L x 0.48, 13L x 0.65									
	Luminaire Watts: 23.7		CRI: 83		Spacing Ratio: 0.62		CCT Multiplier: LEDXT lumen output is the same for all available CCT's									
	LER: 59.41															

SR2DMO-XT20L-E1-RDD2F-xxK-WD-MW-SO

CANDLEPOWER CURVE	INTENSITY	ZONAL LUMENS	SINGLE UNIT: PERFORMANCE INITIAL FOOTCANDLES BASED ON IES BEAM ANGLE				MULTIPLE UNITS: PERFORMANCE 80/50/20% REFLECTANCES INITIAL FOOTCANDLES AND WATTS PER SQUARE FOOT									
			Mounting Height AFF	FC at Center on Floor	Beam Diameter	FC at Beam Edge	Ceiling Height	Fixture Spacing	RCR 3		RCR 5					
	0.00°	0° - 10°	217	15%	5.50'	81 fc	4.1'	41 fc	8'	4'	89	1.57	97	1.93		
	0.00° 2,454	0° - 20°	674	47%	6.50'	58 fc	4.8'	29 fc	12'	6'	35	0.61	48	0.95		
	5.00° 2,343	0° - 30°	1,064	74%	7.50'	44 fc	5.6'	22 fc	16'	8'	23	0.40	20	0.40		
	10.00° 2,050	0° - 40°	1,243	87%	8.50'	34 fc	6.3'	17 fc	Delivered Illuminance Rating: (DIR)							
	15.00° 1,667	0° - 60°	1,371	96%	10.00'	25 fc	7.4'	12 fc	2' Suspension Length							
	20.00° 1,255	0° - 80°	1,425	100%	12.00'	17 fc	8.9'	9 fc	Square rooms used for multiple units:							
	30.00° 511	0° - 90°	1,429	100%	14.00'	13 fc	10.4'	6 fc	- RCR 3: Length & Width = Ceiling Ht. - 4.5' x 3.33							
	40.00° 139	Total	1,429	100%	16.00'	10 fc	11.9'	5 fc	- RCR 5: Length & Width = Ceiling Ht. - 4.5' x 2.00							
	50.00° 72	* Average Footcandles at 2.5' Above Floor														
	60.00° 50	* Exceeds spacing criteria by 79%														
	70.00° 23	** Exceeds spacing criteria by 25%														
	80.00° 7	*** Exceeds spacing criteria by 9%														
	90.00° 0															
	Delivered Lumens: 1,429		CP at 0deg (Nadir): 2,454		Beam Angle: 40.69		Lamp Multiplier: 10L x 0.48, 13L x 0.65									
	Luminaire Watts: 23.7		CRI: 83		Spacing Ratio: 0.64		CCT Multiplier: LEDXT lumen output is the same for all available CCT's									
	LER: 60.30															

