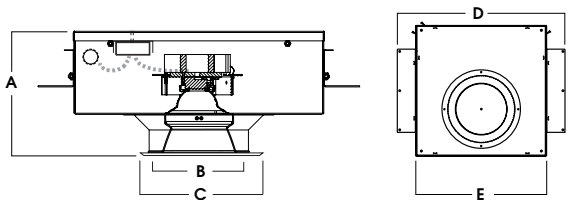
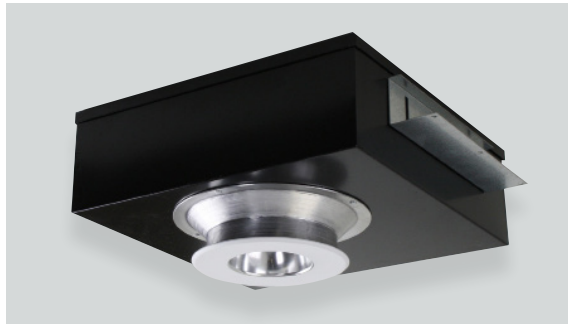
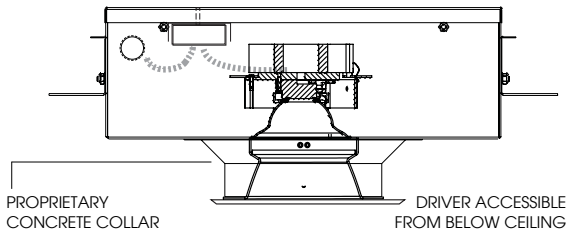




CONCRETE POUR BOX
QUICK CHANGE OPTICS, LED MODULE AND DRIVER FOR MAINTENANCE



A	B	C	D	E
6.5	5.0	6.25	18.8	14.0
165.1 mm	127.0 mm	158.7 mm	477.8 mm	355.6 mm

CPE5LEDXT

APPLICATION

5" XT LED downlight series intended for concrete pour applications.

FEATURES

Proprietary concrete collar and mounting brackets. Two-stage optical system for smooth light distribution and focus control. Quick change LED module with interchangeable optics for job site adjustment and fixture maintenance. Shallow plenum design. Tool-less driver and j-box access. Posi-lock trim retention torsion springs.

TRIM FINISH

A variety of architectural powdercoat and anodized finishes are available.

Matte White flange is standard.

ELECTRONICS

LED system features Xicato LED module with proprietary phosphor technology that provides consistent, stable color with CCT control of +/- 100K over life of the light engine. Base CRI is 83 with 2 MacAdam Ellipse binning. High CRI is 98 with 1 MacAdam Ellipse binning. Variety of electronic 120V/277V and dimming drivers.

CONSTRUCTION

Housing/frame constructed of #20 ga. galvanized steel to resist corrosion. Self-Flanged one piece trim spun from 0.063" thick high purity aluminum and finished to specification.

CODE COMPLIANCE

BAA Compliant. Non-IC rated. ETL certified to meet US and Canadian standards.

Suitable for dry or damp locations. Optional Wet location. Manufactured and

tested to UL standards No. 1598/8750.

WATTAGE TO LUMENS UPDATE			
CURRENT PART NUMBER EXAMPLE	PREVIOUS PART NUMBER EXAMPLE	SOURCE LUMENS ¹	SYSTEM WATTS
CPE5LEDXT10L	CPE5LEDXI15W	1000	11.1
CPE5LEDXT13L	CPE5LEDXI20W	1300	15.0
CPE5LEDXT20L	CPE5LEDXI33W	2000	23.7

SERIES	LUMENS ¹	CCT	OPTICS	DRIVER / VOLTAGE ³	OPTIONS ⁴	TRIM	FINISH	TRIM OPTIONS	
CPE5LEDXT	83 CRI		XN ² 10° ND 27° MD 40° WD 45° XW 50°	E Electronic Driver DS10 10% 0-10V DO10 1% 0-10V DS2W1 1%, ELV/MLV, 120V DLTE1 1% Lutron® 2-Wire Forward Phase, 120V DL3E 1% Lutron® EcoSystem®, Fade EL10 1%, eldoLED ED01 0.1%, eldoLED DALI DALI Control	1 120V 2 277V	FS Fusing CR Corrosion Resistant	AR5400XT	SG ⁵ Semi-Diffuse	PF ⁷ Polished Flange
	10L 1000 Lm	27K 2700K						HZ Haze Full Diffuse	SOX ⁸ Micro Prism Solite™ Lens
	13L 1300 Lm	30K 3000K						MW Matte White	GLX Clear Glass Lens
	20L 2000 Lm	35K 3500K						MB Matte Black	PGX Prismatic Glass Lens
		40K 4000K						AC Anodic Champagne	FGX Frosted Glass Lens
								AS Anodic Sapphire	
	98 CRI								SOW Micro Prism Solite™ Lens Wet Location
	10L 1000 Lm	27HK 2700K	CH Charcoal	GLW Clear Glass Lens Wet Location					
	13L 1300 Lm	30HK 3000K	AS Anodic Sapphire	PGW Prismatic Glass Lens Wet Location					
	20L 2000 Lm	35HK 3500K	AM Anodic Malachite	FGW Frosted Glass Lens Wet Location					
		40HK 4000K	SN Sun Gold						
			CO Copper Metallic						
		GH Graphite							
		AMB Anti Microbial Finish							
		CC ⁶ Custom Color							

EXAMPLE: CPE5LEDXT13L30KMD1/AR5400XTMW

NOTES:
1 Nominal Source Lumens at Any CCT 2 XN 13L Max at 83 and 98 CRI 3 Contact Factory for Additional Options 4 See Product Options Page for Details 5 Standard Finish 6 Contact Factory for Special Finishes
7 Flange and Reflector Same Finish 8 Standard Lens for MD, WD, XW



PROJECT: _____
TYPE: _____



Dimensions and values shown are nominal. Spectrum Lighting continually works to improve products and reserves the right to make changes which may alter the performance or appearance of products.