

STH 4" TRACKLIGHT

POWERTRACK SERIES / 5000 LUMENS

spectrac
track lighting



STH4XT

APPLICATION

STH 4" Powertrack Series LED tracklight for accent, display lighting, high ceiling, and general illumination.

FEATURES

Side mounted driver housing accepts all Spectrac dimming and control options. Front bezel accepts two accessories standard with three accessory option. Fixture rotates 359° and tilts/locks 45°. A variety of accessory lenses may be added. Passive cooled Zhaga compliant LED module for future maintenance or upgrade. Quick twist LED optics for field adjustment. Track series available with a variety of surface, pendant and cord/clamp mounting.

FINISH

Multi-stage polyester powder-coat process applied on our dedicated paint lines. A wide variety of standard and custom finishes are available. All exposed materials are chromate pretreated to resist corrosion.

ELECTRONICS

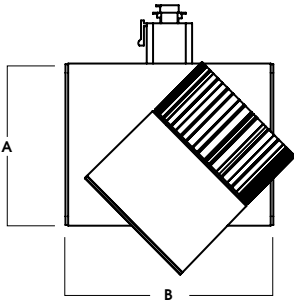
LED system features Xicato LED module with proprietary phosphor technology that provides consistent, stable color with CCT control of +/- 100K over life of the module. Base CRI is 83 with 2 MacAdam Ellipse binning. High CRI is 98 with 1 MacAdam Ellipse binning. Variety of electronic 120V/277V and dimming drivers.

CONSTRUCTION

Die-cast and extruded aluminum construction.

CODE COMPLIANCE

BAA compliant. ETL certified to meet US and Canadian standards. Suitable for dry or damp locations. Manufactured and tested to UL Standards No. 1598/8750.



LUMENS	A	B
10L-40L	4.50	6.5
50L	5.66	6.5

WATTAGE / LUMENS DATA

CURRENT PART NUMBER EXAMPLE	PREVIOUS PART NUMBER EXAMPLE	SOURCE LUMENS ¹	DELIVERED LUMENS ²	SYSTEM WATTS	LPW/LER
STH4XT10L	SRHDLEDXT10L	1000	872	9.1	96
STH4XT13L	SRHDLEDXT13L	1300	1174	13.0	90
STH4XT20L	SRHDLEDXT20L	2000	1808	21.7	83
STH4XT30L	SRHDLEDXT30L	3000	2710	32.6	83
STH4XT40L	SRHDLEDXT40L	4000	3477	37.9	92
STH4XT50L	SRHDLEDXT50L	5000	3696	52.0	71

SERIES	LUMENS ¹	CCT	BEAM	DRIVER / VOLTAGE ³	ADAPTOR / MOUNTING	FINISH ¹⁰	ACCESSORIES ¹²	
STH4XT	83 CRI		ND 15.1°	E ⁴ Electronic Driver	1 120V 2 277V	ADAPTOR TEK100 Global TEK 2 CIR/2 NEUT 120V HTEK100 Global TEK 2 CIR/2 NEUT 277V GES66 Global GES 1 CIR/1 NEUT 120V TP3 ⁷ Global XTSC 3 CIR/1 NEUT 120V, 0-10V Dimmable	MW ¹¹ Matte White MB ¹¹ Matte Black PT ¹¹ Platinum Silver CC Custom Color See Page 5 for Full Range of Color Options (83-90102)	SO35 Solite Diffuse Lens FG35 Frosted Lens SK35 Skytex Linear LN ¹³ Clear Lens SN35 Snoot HL35 Hex Louver 3AC 3 Accessory
	10L 1000 Lm	27K 2700K	MD 25.8°	DS10 ⁵ 10% 0-10V				
	13L 1300 Lm	30K 3000K	WD 36.1°	DO10 ⁵ 1% 0-10V				
	20L 2000 Lm	35K 3500K	XW 53.9°	ED01 ⁶ 0.1%, eldoLED				
	30L 3000 Lm	40K 4000K		DS2W1 1%, ELV/MLV, 120V				
	40L 4000 Lm			DLTE1 ⁶ Lutron® 2-Wire Forward Phase (MLV), 120V				
	50L 5000 Lm			DL3E ^{5/6} 1%, Lutron® EcoSystem®, Fades to Black, 120V/277V				
	98 CRI			DALI ^{5/6} DALI Control				
	10L 1000 Lm	27HK 2700K						
	13L 1300 Lm	30HK 3000K						
20L 2000 Lm	35HK 3500K							
30L 3000 Lm	40HK 4000K							
					MOUNTING			
					PC1 Pipe Clamp			
					CP6 6" Straight Cord & Plug			
					CP24 24" Straight Cord & Plug			
					CCP6 6" Coil Cord & Plug			
					CP5 5" Round Surface Mount Canopy (120V/277V)			
					MPT3 ⁸ Monopoint Canopy			
					PM ⁹ Pendant with Track Adaptor, PC1 or CP5			

EXAMPLE: STH4XT20L30KMDDLTE1/TEK100/MT/HL35

NOTES:
¹ Nominal Source Lumens at Any CCT ² Nominal Delivered Lumens at 83 CRI at Any CCT With ND-No Lens ³ Contact Factory for Additional Options ⁴ 277V Requires HTEK 277V Track and Adaptor
⁵ Requires TP3 Adaptor and XTSC PULSE Track System, 120V Only ⁶ 50L Not Available with Lutron Drivers ⁷ 120V 0-10V Only ⁸ 120V Only / GES66 Adaptor ⁹ See Mounting Options for Pendant Specifications
¹⁰ See Color Page for More Options/Consult Factory for Special Finishes ¹¹ Standard Finishes ¹² Accessory Finish Will Match Fixture ¹³ See Lens Page for Options



PROJECT: _____
 TYPE: _____



Dimensions and values shown are nominal. Spectrum Lighting continually works to improve products and reserves the right to make changes which may alter the performance or appearance of products.



STH 4" TRACKLIGHT

POWERTRACK SERIES / FIXTURE OPTIONS

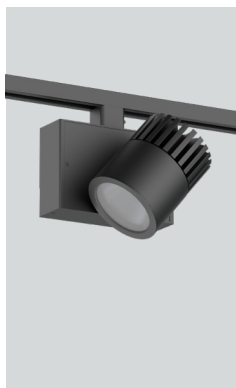
STANDARD FINISHES

Black adaptor standard for all finishes excluding MW which comes with white adaptor.

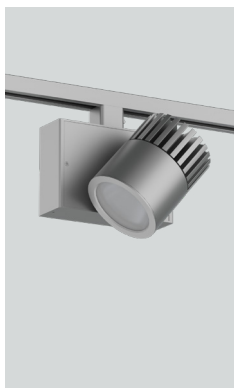
MW - MATTE WHITE



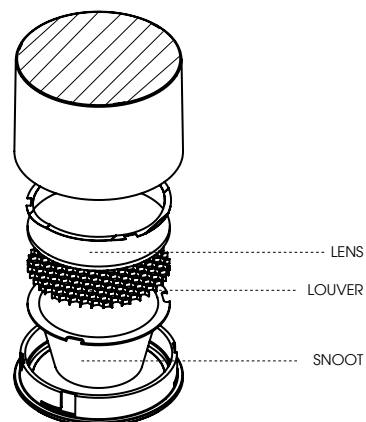
MB - MATTE BLACK



PT - PLATINUM

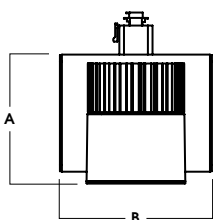


FIXTURE COMPONENTS



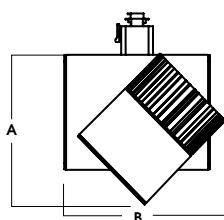
FIXTURE DIMENSIONS

0° POSITION



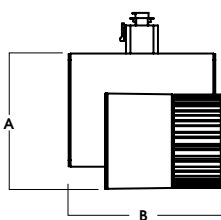
LUMENS	A	B
10L-40L	5.2	6.5
50L	6.3	6.5

45° TILT



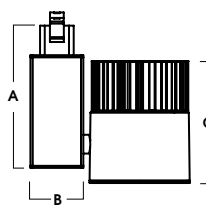
LUMENS	A	B
10L-40L	6.2	7.0
50L	7.2	7.8

90° TILT



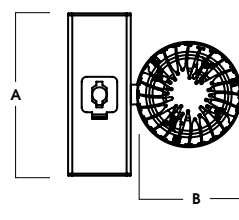
LUMENS	A	B
10L-40L	5.6	6.6
50L	6.7	7.8

SIDE VIEW



LUMENS	A	B	C
10L-40L	5.7	2.1	4.9
50L	6.9	2.1	6.3

TOP VIEW



LUMENS	A	B
10L-40L	6.5	4.0
50L	6.5	4.0



STH 4" TRACKLIGHT

POWERTRACK SERIES / PHOTOMETRIC DATA

STH4XT-50L-xxK-ND-EX-MW-NL

CANDLEPOWER CURVE TEST SP-00551	INTENSITY CANDELA 0° AZIMUTH	ZONAL LUMENS	SINGLE UNIT: PERFORMANCE INITIAL FOOTCANDLES BASED ON IES BEAM ANGLE	MULTIPLE UNITS: PERFORMANCE 80/50/20% REFLECTANCES INITIAL FOOTCANDLES AND WATTS PER SQUARE FOOT											
				Ceiling Height	Fixture Spacing	RCR 6		RCR 8							
	0.00°			Mounting Height AFF	FC at Center on Floor	Beam Diameter	FC at Beam Edge								
	0.00°	24,121	0° - 10°	1,794	44%	10.0'	241 fc	3.0'	121 fc	16'	2'	860	12.08	916	13.63
	5.00°	16,583	0° - 20°	3,029	75%	12.0'	168 fc	3.6'	84 fc	20'	4'	242	3.40	205	3.06
	10.00°	7,644	0° - 30°	3,717	92%	14.0'	123 fc	4.1'	62 fc	24'	4'	205	2.87	191	2.85
	15.00°	3,351	0° - 40°	3,940	97%	16.0'	94 fc	4.7'	47 fc	Delivered Illuminance Rating: (DIR)		71 FC per W/Sq. Ft.		67 FC per W/Sq. Ft.	
	20.00°	1,941	0° - 60°	3,983	98%	20.0'	60 fc	5.9'	30 fc	1' Suspension Length Square rooms used for multiple units: - RCR 6: Length & Width = Ceiling Ht. - 3.5' x 1.66 - RCR 8: Length & Width = Ceiling Ht. - 3.5' x 1.25 + Average Footcandles at 2.5' Above Floor					
	30.00°	801	0° - 80°	4,038	100%	24.0'	42 fc	7.1'	21 fc						
	40.00°	35	0° - 90°	4,047	100%	28.0'	31 fc	8.3'	15 fc						
	50.00°	21	Total	4,047	100%	32.0'	24 fc	9.5'	12 fc						
	60.00°	34													
	70.00°	24													
	80.00°	20													
80.00°	20														
24000 cd	1														

Delivered Lumens: 4,047
Luminaire Watts: 52
LER: 77.83

CP at 0deg (Nadir): 24,121
CRI: 83

Beam Angle: 15.06
Spacing Ratio: 0.25

Lumen Multiplier: 10L x 0.2, 13L x 0.26, 20L x 0.4, 30L x 0.6, 40L x 0.8
CCT Multiplier: Same for all available CCT's

STH4XT-50L-xxK-MD-EX-MW-NL

CANDLEPOWER CURVE TEST SP-00551_3	INTENSITY CANDELA 0° AZIMUTH	ZONAL LUMENS	SINGLE UNIT: PERFORMANCE INITIAL FOOTCANDLES BASED ON IES BEAM ANGLE	MULTIPLE UNITS: PERFORMANCE 80/50/20% REFLECTANCES INITIAL FOOTCANDLES AND WATTS PER SQUARE FOOT											
				Ceiling Height	Fixture Spacing	RCR 3		RCR 5							
	0.00°			Mounting Height AFF	FC at Center on Floor	Beam Diameter	FC at Beam Edge								
	0.00°	11,655	0° - 10°	1,113	29%	6.5'	276 fc	3.1'	138 fc	9'	2'	903	12.56	707	10.74
	5.00°	10,262	0° - 20°	2,489	66%	7.5'	207 fc	3.6'	104 fc	12'	4'	229	3.18	189	2.88
	10.00°	7,486	0° - 30°	3,349	89%	8.5'	161 fc	4.1'	81 fc	16'	6'	106	1.47	88	1.33
	15.00°	4,659	0° - 40°	3,604	95%	10.0'	117 fc	4.8'	58 fc	Delivered Illuminance Rating: (DIR)		72 FC per W/Sq. Ft.		66 FC per W/Sq. Ft.	
	20.00°	2,791	0° - 60°	3,679	97%	12.0'	81 fc	5.8'	40 fc	1' Suspension Length Square rooms used for multiple units: - RCR 3: Length & Width = Ceiling Ht. - 3.5' x 3.33 - RCR 5: Length & Width = Ceiling Ht. - 3.5' x 2.00 + Average Footcandles at 2.5' Above Floor					
	30.00°	974	0° - 80°	3,765	100%	14.0'	59 fc	6.7'	30 fc						
	40.00°	51	0° - 90°	3,783	100%	16.0'	46 fc	7.7'	23 fc						
	50.00°	43	Total	3,783	100%	20.0'	29 fc	9.6'	15 fc						
	60.00°	58													
	70.00°	42													
	80.00°	33													
90.00°	2														

Delivered Lumens: 3,783
Luminaire Watts: 52
LER: 72.75

CP at 0deg (Nadir): 11,655
CRI: 83

Beam Angle: 25.87
Spacing Ratio: 0.43

Lumen Multiplier: 10L x 0.2, 13L x 0.26, 20L x 0.4, 30L x 0.6, 40L x 0.8
CCT Multiplier: Same for all available CCT's

STH4XT-50L-xxK-WD-EX-MW-NL

CANDLEPOWER CURVE TEST SP-00551_6	INTENSITY CANDELA 0° AZIMUTH	ZONAL LUMENS	SINGLE UNIT: PERFORMANCE INITIAL FOOTCANDLES BASED ON IES BEAM ANGLE	MULTIPLE UNITS: PERFORMANCE 80/50/20% REFLECTANCES INITIAL FOOTCANDLES AND WATTS PER SQUARE FOOT											
				Ceiling Height	Fixture Spacing	RCR 3		RCR 5							
	0.00°			Mounting Height AFF	FC at Center on Floor	Beam Diameter	FC at Beam Edge								
	0.00°	8,087	0° - 10°	849	22%	6.5'	191 fc	4.4'	96 fc	9'	2'	894	12.56	694	10.74
	5.00°	7,604	0° - 20°	2,270	60%	7.5'	144 fc	5.0'	72 fc	12'	4'	227	3.18	186	2.88
	10.00°	6,603	0° - 30°	3,309	87%	8.5'	112 fc	5.7'	56 fc	16'	6'	105	1.47	86	1.33
	15.00°	5,087	0° - 40°	3,601	95%	10.0'	81 fc	6.7'	40 fc	Delivered Illuminance Rating: (DIR)		71 FC per W/Sq. Ft.		65 FC per W/Sq. Ft.	
	20.00°	3,370	0° - 60°	3,689	98%	12.0'	56 fc	8.0'	28 fc	1' Suspension Length Square rooms used for multiple units: - RCR 3: Length & Width = Ceiling Ht. - 3.5' x 3.33 - RCR 5: Length & Width = Ceiling Ht. - 3.5' x 2.00 + Average Footcandles at 2.5' Above Floor					
	30.00°	1,128	0° - 80°	3,765	100%	14.0'	41 fc	9.4'	21 fc						
	40.00°	60	0° - 90°	3,783	100%	16.0'	32 fc	10.7'	16 fc						
	50.00°	52	Total	3,783	100%	20.0'	20 fc	13.4'	10 fc						
	60.00°	51													
	70.00°	37													
	80.00°	33													
8000 cd	1														

Delivered Lumens: 3,783
Luminaire Watts: 52
LER: 72.75

CP at 0deg (Nadir): 8,087
CRI: 83

Beam Angle: 36.08
Spacing Ratio: 0.58

Lumen Multiplier: 10L x 0.2, 13L x 0.26, 20L x 0.4, 30L x 0.6, 40L x 0.8
CCT Multiplier: Same for all available CCT's



STH 4" TRACKLIGHT

POWERTRACK SERIES / PHOTOMETRIC DATA

STH4XT-50L-xxK-XW-EX-MW-NL

CANDLEPOWER CURVE TEST SP-00551_9	INTENSITY CANDELA 0° AZIMUTH	ZONAL LUMENS	SINGLE UNIT: PERFORMANCE INITIAL FOOTCANDLES BASED ON IES BEAM ANGLE				MULTIPLE UNITS: PERFORMANCE 80/50/20% REFLECTANCES INITIAL FOOTCANDLES AND WATTS PER SQUARE FOOT										
			Mounting Height Aff	FC at Center on Floor	Beam Diameter	FC at Beam Edge	Ceiling Height	Fixture Spacing	RCR 2		RCR 4						
	0.00°																
	0.00°	4,917	0° - 10°	542	14%	6.5'	116 fc	6.8'	58 fc	9'	4'	252	3.37	164	2.48		
	5.00°	4,780	0° - 20°	1,711	45%	7.5'	87 fc	7.8'	43 fc	12'	6'	106	1.41	69	1.04		
	10.00°	4,516	0° - 30°	3,027	79%	8.5'	68 fc	8.8'	34 fc	16'	8'	64	0.85	56	0.85		
	15.00°	4,148	0° - 40°	3,595	94%	10.0'	49 fc	10.4'	24 fc	Delivered Illuminance Rating: (DIR)		75 FC per W/Sq. Ft.		66 FC per W/Sq. Ft.			
	20.00°	3,640	0° - 60°	3,741	98%	12.0'	34 fc	12.5'	17 fc	1' Suspension Length Square rooms used for multiple units: - RCR 2: Length & Width = Ceiling Ht. - 3.5' x 5.00 - RCR 4: Length & Width = Ceiling Ht. - 3.5' x 2.50 + Average Footcandles at 2.5' Above Floor							
	30.00°	1,786	0° - 80°	3,802	100%	14.0'	25 fc	14.5'	12 fc								
	40.00°	230	0° - 90°	3,818	100%	16.0'	19 fc	16.6'	10 fc								
	50.00°	59	Total	3,818	100%	20.0'	12 fc	20.8'	6 fc								
	60.00°	38															
	70.00°	30															
	80.00°	28															
	90.00°	1															

Delivered Lumens: **3,818**
Luminaire Watts: **52**
LER: **73.42**

CP at 0deg (Nadir): **4,917**
CRI: **83**

Beam Angle: **53.91**
Spacing Ratio: **0.85**

Lumen Multiplier: **10L x 0.2, 13L x 0.26, 20L x 0.4, 30L x 0.6, 40L x 0.8**
CCT Multiplier: **Same for all available CCTs**

COLOR OPTIONS - POWDER COAT PAINT FINISHES

NOTE: NO PRINTED IMAGE CAN EQUAL THE EXACT COLOR OF FINISH ON METAL.
SEE INDIVIDUAL SPECIFICATION SHEETS OR CONSULT FACTORY FOR ADDITIONAL INFORMATION.



STANDARD CORD / STEM / CANOPY FINISHES / TRACK ADAPTER

FIXTURE COLOR	STANDARD CORD COLOR / TRACK ADAPTER	STANDARD CANOPY / STEM COLOR
Matte White	Matte White	Matte White
Matte Black	Matte Black	Matte Black
All Others	Matte Black	Same Color as Fixture
Custom Color	Contact Factory	Contact Factory

PAINT TIMES

TIER	COST	AVERAGE PAINT TIME*
Tier 1 - Standard Finishes	\$	🕒
Custom Color	Contact Factory	Contact Factory

*CONTACT FACTORY FOR SPECIFIC PRODUCT LEAD TIMES

TIER 1 - STANDARD FINISHES



CUSTOM COLOR FINISHES

CONTACT FACTORY

CC
Custom Color

