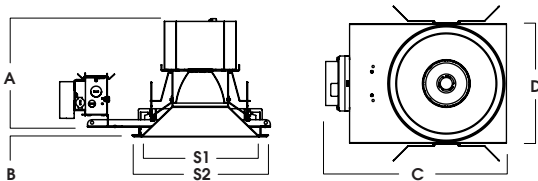
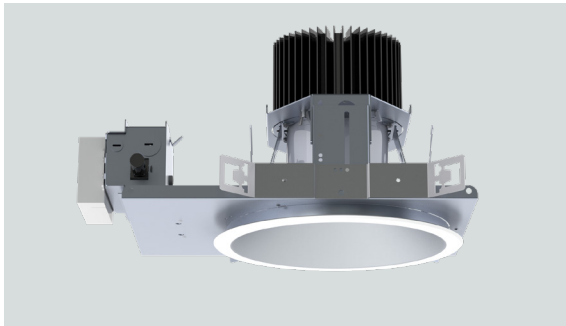
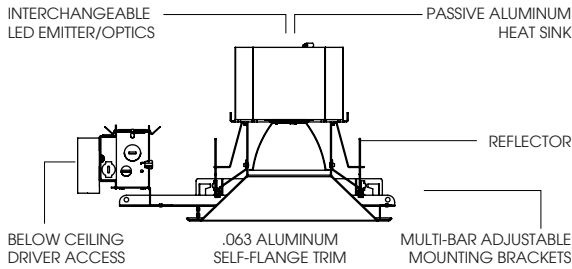




10" ROUND DOWNLIGHT BX SERIES / 8000 LUMENS MAX



A	B	C	D	S1	S2
8.9	.625	17.3	11.4	9.6	11.2
226.1 mm	15.9 mm	439.4 mm	289.6 mm	243.8 mm	284.5 mm

SGE10BX - TRIM FLANGE / NON-IC RATED

APPLICATION

10" round open aperture deep regressed recessed high output LED downlight for high ceiling illumination in malls, churches and commercial applications.

FEATURES

Two-stage optical system for smooth light distribution and focus control. Quick change LED module with interchangeable optics for job site adjustment and fixture maintenance. Tool-less driver and j-box access. Posi-lock trim retention torsion springs. Multi-bar mounting brackets.

TRIM FINISH

A variety of architectural powdercoat and anodized finishes are available.

ELECTRONICS

LED module features high brightness white Bridgelux® LEDs. 3-step MacAdam Ellipse binning and CRI 80 or 90. 2-step MacAdam Ellipse binning available, consult factory. 1% 0-10V dimming offered standard.

CONSTRUCTION

Housing/frame constructed of #20 ga. galvanized steel to resist corrosion. Self-flanged one piece trim spun from 0.063" thick high purity aluminum and finished to specification.

CODE COMPLIANCE

BAA Compliant. Non-IC rated. ETL certified to meet US and Canadian standards. Suitable for dry or damp locations. Complies with CUL. Manufactured and tested to UL standards No. 1598/8750.

LUMENS / WATTAGE DATA				
PART NUMBER	SOURCE LUMENS ¹	DELIVERED LUMENS ²	SYSTEM WATTS	LPW
SGE10BX60L MD	6000	4956	44	113
SGE10BX70L MD	7000	5634	51	110
SGE10BX80L MD	8000	6521	60	109

SERIES	LUMENS ¹	CCT	OPTICS	DRIVER / VOLTAGE ³	OPTIONS ⁶	TRIM	FINISH	FLANGE FINISH			
SGE10BX	60L	6000 Lm	80 CRI	DO10_ 1%, 0-10V DS2W1 1%, ELV/MLV, 120V DLTE1⁴ 1% Lutron® 2-Wire Forward Phase, 120V DL3E_⁴ 1% Lutron® EcoSystem®, Fade EL10_ 1%, eldoLED ED01_ 0.1%, eldoLED DALI_ DALI Control DMXS_^{4/5} DMX Standard Configuration DMXC_^{4/5} DMX Non-Standard Custom BLU Bluetooth LE	1 120V 2 277V 3⁴ 347V	BH27⁷ 27" Solid Bars H12 12" - 24" Expandable Bars H06 6" - 12" Expandable Bars CB24 24" C-Channel Bars FS Fusing EB Fixture Painted Black PR⁸ Deep Ceiling Extension GR Goof Ring EM Integral Emergency Battery EMRM Remote Emergency Battery Pack	AR10BX	SG⁸ Semi-Diffuse MW Matte White MB Matte Black PT Platinum Silver CH Charcoal AC Anodic Champagne AS Anodic Sapphire AM Anodic Malachite SN Sun Gold CO Copper Metallic GH Graphite CC⁹ Custom Color	WF White Flange MF¹⁰ Matching Flange		
	70L	7000 Lm	27K 2700K							ND 24°	MD 40°
	80L	8000 Lm	30K 3000K							WD 55°	
			35K 3500K							XW 66°	
			40K 4000K								
			90 CRI								
			27HK 2700K								
			30HK 3000K								
			35HK 3500K								
			40HK 4000K								

EXAMPLE: SGE10BX60L30KMDDO101/BH27/AR10BXSGMF

NOTES:
 1 Nominal Source Lumens 2 Nominal Delivered Lumens at 35K with MD-SG 3 Contact Factory for Additional Options 4 60L Max 5 Contact Factory 6 See Product Options Page for Details 7 Standard Bar Hangers
 8 Standard Finish 9 Contact Factory for Special Finishes 10 Flange Same Color as Inside of Trim



PROJECT: _____
 TYPE: _____



Dimensions and values shown are nominal. Spectrum Lighting continually works to improve products and reserves the right to make changes which may alter the performance or appearance of products.

10" ROUND DOWNLIGHT BX SERIES / PHOTOMETRIC DATA

recessed
fixtures



SGE10BX 80L 35K ND DO101 AR10BX SG WF

CANDLEPOWER CURVE TEST SP-00683_5	INTENSITY CANDELA 0° AZIMUTH	ZONAL LUMENS	SINGLE UNIT: PERFORMANCE INITIAL FOOTCANDLES BASED ON IES BEAM ANGLE				MULTIPLE UNITS: PERFORMANCE 80/50/20% REFLECTANCES INITIAL FOOTCANDLES AND WATTS PER SQUARE FOOT										
			Mounting Height AFF	FC at Center on Floor	Beam Diameter	FC at Beam Edge	Ceiling Height	Fixture Spacing	RCR 3		RCR 5						
	0.00°																
	0.00° 21,205	0° - 10° 1,708 26%	8.0' 331 fc	3.5'	155 fc	14'	4'	363	3.31	405	4.08						
	5.00° 19,271	0° - 20° 3,924 59%	10.0' 212 fc	4.4'	99 fc	18'	6'	200	1.82	155	1.56						
	10.00° 13,835	0° - 30° 5,410 82%	12.0' 147 fc	5.3'	69 fc	22'	8'	100	0.91	98	0.99						
	15.00° 7,859	0° - 40° 6,413 97%	14.0' 108 fc	6.2'	51 fc	Delivered Illuminance Rating: (DIR) 110 FC per W/Sq. Ft. 99 FC per W/Sq. Ft.											
	20.00° 4,548	0° - 60° 6,600 100%	16.0' 83 fc	7.0'	39 fc												
	30.00° 2,453	0° - 80° 6,602 100%	20.0' 53 fc	8.8'	25 fc	Recessed Mounting Square rooms used for multiple units: - RCR 3: Length & Width = Ceiling Ht. -2.5' x 3.33 - RCR 5: Length & Width = Ceiling Ht. -2.5' x 2.00 + Average Footcandles at 2.5' Above Floor											
	40.00° 798	0° - 90° 6,603 100%	24.0' 37 fc	10.6'	17 fc												
	50.00° 3	Total 6,603 100%	28.0' 27 fc	12.3'	13 fc												
	60.00° 1																
	70.00° 1																
	80.00° 0																
	90.00° 1																

Delivered Lumens: **6,603**
Luminaire Watts: **60**
LER: **110.05**

CP at 0deg (Nadir): **21,205**
CRI: **80**

Beam Angle: **24.79**
Spacing Ratio: **0.42**

Lumen Multiplier: **60L x 0.76, 70L x 0.86**
CCT Multiplier: **27K x 0.932, 30K x 1.00, 40K x 1.01**

SGE10BX 80L 35K MD DO101 AR10BX SG WF

CANDLEPOWER CURVE TEST SP-00683_4	INTENSITY CANDELA 0° AZIMUTH	ZONAL LUMENS	SINGLE UNIT: PERFORMANCE INITIAL FOOTCANDLES BASED ON IES BEAM ANGLE				MULTIPLE UNITS: PERFORMANCE 80/50/20% REFLECTANCES INITIAL FOOTCANDLES AND WATTS PER SQUARE FOOT										
			Mounting Height AFF	FC at Center on Floor	Beam Diameter	FC at Beam Edge	Ceiling Height	Fixture Spacing	RCR 3		RCR 5						
	0.00°																
	0.00° 12,691	0° - 10° 1,156 18%	8.0' 198 fc	5.9'	82 fc	14'	6'	158	1.47	175	1.81						
	5.00° 12,265	0° - 20° 3,624 56%	10.0' 127 fc	7.4'	53 fc	18'	8'	87	0.81	96	1.00						
	10.00° 11,004	0° - 30° 5,538 85%	12.0' 88 fc	8.9'	37 fc	22'	10'	55	0.51	61	0.63						
	15.00° 8,885	0° - 40° 6,403 98%	14.0' 65 fc	10.3'	27 fc	Delivered Illuminance Rating: (DIR) 107 FC per W/Sq. Ft. 96 FC per W/Sq. Ft.											
	20.00° 6,292	0° - 60° 6,500 100%	16.0' 50 fc	11.8'	21 fc												
	30.00° 2,433	0° - 80° 6,503 100%	20.0' 32 fc	14.8'	13 fc	Recessed Mounting Square rooms used for multiple units: - RCR 3: Length & Width = Ceiling Ht. -2.5' x 3.33 - RCR 5: Length & Width = Ceiling Ht. -2.5' x 2.00 + Average Footcandles at 2.5' Above Floor											
	40.00° 467	0° - 90° 6,504 100%	24.0' 22 fc	17.7'	9 fc												
	50.00° 2	Total 6,504 100%	28.0' 16 fc	20.7'	7 fc												
	60.00° 1																
	70.00° 1																
	80.00° 1																
	90.00° 1																

Delivered Lumens: **6,504**
Luminaire Watts: **60**
LER: **108.40**

CP at 0deg (Nadir): **12,691**
CRI: **80**

Beam Angle: **40.49**
Spacing Ratio: **0.64**

Lumen Multiplier: **60L x 0.76, 70L x 0.86**
CCT Multiplier: **27K x 0.932, 30K x 1.00, 40K x 1.01**

SGE10BX 80L 35K WD DO101 AR10BX SG WF

CANDLEPOWER CURVE TEST SP-00683_6	INTENSITY CANDELA 0° AZIMUTH	ZONAL LUMENS	SINGLE UNIT: PERFORMANCE INITIAL FOOTCANDLES BASED ON IES BEAM ANGLE				MULTIPLE UNITS: PERFORMANCE 80/50/20% REFLECTANCES INITIAL FOOTCANDLES AND WATTS PER SQUARE FOOT										
			Mounting Height AFF	FC at Center on Floor	Beam Diameter	FC at Beam Edge	Ceiling Height	Fixture Spacing	RCR 2		RCR 4						
	0.00°																
	0.00° 7,460	0° - 10° 694 11%	6.0' 207 fc	7.1'	66 fc	14'	8'	98	0.89	63	0.65						
	5.00° 7,286	0° - 20° 2,484 38%	8.0' 117 fc	9.5'	37 fc	18'	10'	71	0.64	62	0.64						
	10.00° 6,894	0° - 30° 4,716 73%	10.0' 75 fc	11.8'	24 fc	22'	14'	34	0.31	22	0.23						
	15.00° 6,320	0° - 40° 6,198 96%	12.0' 52 fc	14.2'	17 fc	Delivered Illuminance Rating: (DIR) 111 FC per W/Sq. Ft. 97 FC per W/Sq. Ft.											
	20.00° 5,595	0° - 60° 6,457 100%	14.0' 38 fc	16.6'	12 fc												
	30.00° 3,908	0° - 80° 6,459 100%	16.0' 29 fc	18.9'	9 fc	Recessed Mounting Square rooms used for multiple units: - RCR 2: Length & Width = Ceiling Ht. -2.5' x 5.00 - RCR 4: Length & Width = Ceiling Ht. -2.5' x 2.50 + Average Footcandles at 2.5' Above Floor											
	40.00° 960	0° - 90° 6,460 100%	20.0' 19 fc	23.7'	6 fc												
	50.00° 22	Total 6,460 100%	24.0' 13 fc	28.4'	4 fc												
	60.00° 1																
	70.00° 1																
	80.00° 1																
	90.00° 0																

Delivered Lumens: **6,460**
Luminaire Watts: **60**
LER: **107.67**

CP at 0deg (Nadir): **7,460**
CRI: **80**

Beam Angle: **61.24**
Spacing Ratio: **0.9**

Lumen Multiplier: **60L x 0.76, 70L x 0.86**
CCT Multiplier: **27K x 0.932, 30K x 1.00, 40K x 1.01**

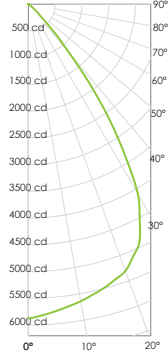
10" ROUND DOWNLIGHT BX SERIES / PHOTOMETRIC DATA

recessed
fixtures



SGE10BX 80L 35K XW DO101 AR10BX SG WF

CANDLEPOWER CURVE
TEST SP-00683_7



Delivered Lumens: **6,384**
Luminaire Watts: **60**
LER: **106.40**

**INTENSITY
CANDELA
0° AZIMUTH**

0.00°	0.00°
0.00°	5,873
5.00°	5,764
10.00°	5,639
15.00°	5,489
20.00°	5,307
30.00°	4,089
40.00°	1,183
50.00°	133
60.00°	3
70.00°	1
80.00°	1
90.00°	1

CP at 0deg (Nadir): **5,873**
CRI: **80**

ZONAL LUMENS

0° - 10°	555	9%
0° - 20°	2,108	33%
0° - 30°	4,325	68%
0° - 40°	5,960	93%
0° - 60°	6,380	100%
0° - 80°	6,383	100%
0° - 90°	6,384	100%
Total	6,384	100%

**SINGLE UNIT: PERFORMANCE
INITIAL FOOTCANDLES
BASED ON IES BEAM ANGLE**

Mounting Height AFF	FC at Center on Floor	Beam Diameter	FC at Beam Edge
6.0'	163 fc	8.1'	46 fc
8.0'	92 fc	10.9'	26 fc
10.0'	59 fc	13.6'	17 fc
12.0'	41 fc	16.3'	12 fc
14.0'	30 fc	19.0'	9 fc
16.0'	23 fc	21.7'	7 fc
20.0'	15 fc	27.1'	4 fc
24.0'	10 fc	32.6'	3 fc

Beam Angle: **68.33**
Spacing Ratio: **1.09**

**MULTIPLE UNITS: PERFORMANCE
80/50/20% REFLECTANCES
INITIAL FOOTCANDLES AND WATTS PER SQUARE FOOT**

Ceiling Height	Fixture Spacing	RCR 2		RCR 4	
		FC *	W/Sq. Ft.	FC *	W/Sq. Ft.
14'	10'	71	0.65	62	0.65
18'	12'	39	0.36	34	0.36
22'	16'	25	0.23	21	0.23
Delivered Illuminance Rating: (DIR)		109 FC per W/Sq. Ft.		94 FC per W/Sq. Ft.	
Recessed Mounting Square rooms used for multiple units: - RCR 2: Length & Width = Ceiling Ht. - 2.5' x 5.00 - RCR 4: Length & Width = Ceiling Ht. - 2.5' x 2.50 * Average Footcandles at 2.5' Above Floor					

Lumen Multiplier: **60L x 0.76, 70L x 0.86**
CCT Multiplier: **27K x 0.932, 30K x 1.00, 40K x 1.01**