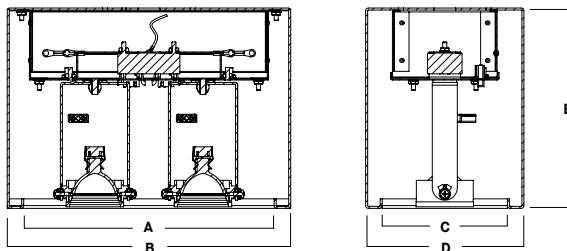


**5" MODULAR ACCENT LIGHT
SUSPENDED / SURFACE**
MR16 SERIES / 2 OR 3 MODULES

PROJECT: _____
QUANTITY: _____ TYPE: _____



SERIES	A	B	C	D	E
RCC510LV	10.0	11.3	5.0	6.3	8.0
RCC515LV	15.0	16.3	5.0	6.3	8.0

RCC51-LV

APPLICATION

RCC 5" series MR16 Low Voltage suspended/surface accent light.

FEATURES

Surface mounted modular accent fixture. Fixture heads rotate 359°, lock and tilt to 38° for optimal aiming. Standard front loading lamp bezel accepts up to two lens/louver options. Three accessory option available (3AC). Maximum wattage label (MWL) for low wattage Halogen or LED lamps.

TRIM FINISH

A variety of architectural powdercoat finishes are available. Matte White Self-flange is standard.

ELECTRONICS

Electronic 120V transformer is standard. 277V electronic, 120V and 277V LED rated electronic and remote transformer options. High temperature rated porcelain GU10 socket. 37W per lamp max.

CONSTRUCTION

Housing formed of #18 gauge 5052-H32 aluminum, seam welded and finished to specification. Fixture modules die-cast and machined aluminum.

CODE COMPLIANCE

ARRA Compliant. ETL listed for damp locations. Manufactured and tested to UL standards No. 1598/8750.

SERIES	LAMP	TRANSFORMER / VOLTAGE	OPTIONS ¹	INTERIOR	MOUNTING ³	FINISHES ⁵	
RCC510LV 2 Module	MR16	E_ Electronic Driver Transformer for Use with LED MR16 Lamps	1 120V 2 277V	GL16 Clear Glass Lens FG16 Frosted Lens SK16 Linear Lens SO16 Solite Diffusion Lens HL16 Hex Louver SN16 Snoot LN16² 3 Accessory Hub	MWI White MBI Black PTI Platinum BZI Bronze CCI Custom Color	2xHM⁴ 2-Hang-Straight Pendants (3/8 IPS) 2xPM⁴ Rigid Pendant (3/8 IPS) 4xCD⁴ 4-Aircraft Cable, Straight Cord SM Surface Mount SCI Safety Cable	MW⁶ Matte White MB⁶ Matte Black PT⁶ Platinum Silver BZ Bronze CH Charcoal TW Textured White TB Textured Black MT Textured Silver GH Graphite SN Sun Gold AC Champagne AN Anodic Natural CN Caramel CC Custom Color

EXAMPLE: RCC510LVMR16E1LEDGL16MBI/SMMW

¹ See Product Options Page for Details ² See Lens Options Page for Details ³ Suspension Points With Power
⁴ Specify Length in Inches ⁵ Contact Factory for Special Finishes ⁶ Standard Finishes

