



COMMERCIAL DOWNLIGHT SERIES BY SPECTRUM

12" ROUND DOWNLIGHT NON-IC CONSTRUCTION

Spectrum's Infinium 12" recessed round downlight series features a shallow plenum housing for general illumination.

LUMENS AND WATTAGE CHART			
PART NUMBER	DELIVERED LUMENS ¹	SYSTEM WATTS	LPW
SGE12FX10L	792	6.6	120
SGE12FX15L	1231	10.5	117
SGE12FX20L	1670	14.4	116
SGE12FX30L	2505	21.9	114
SGE12FX40L	3383	30	113
SGE12FX50L	4304	38.3	112

¹ Nominal Delivered Lumens at 35K with MW SO



PROJECT: _____
 QUANTITY: _____ TYPE: _____

MATTE WHITE
MATCHING FLANGE



MATTE BLACK
MATCHING FLANGE



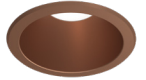
SEMI-DIFFUSE
MATCHING FLANGE



PLATINUM SILVER
MATCHING FLANGE

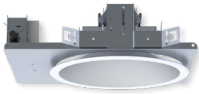


BRONZE
MATCHING FLANGE



AVAILABLE HOUSING TYPE

SGE12FX - New Construction



PRODUCT SELECTOR GUIDE

SERIES	LUMENS	CRI / CCT	DRIVER / VOLTAGE	EMERGENCY	BAR HANGERS	TRIM TYPE	FINISH	FLANGE FINISH	LENS	TRIM OPTIONS
SGE12FX						AR1223FX				
EXAMPLE	15L	35K	DX		BH27	AR1223FX	MW	MF	SO	

FIXTURE HOUSING SPECIFICATION

SERIES	LUMENS	CRI / CCT	DRIVER / VOLTAGE	EMERGENCY	BAR HANGERS	
SGE12FX	10L 800 Lm	90 Minimum	DX 1%, 0-10V, 120V/277V	EM Integral Emergency Battery	BH27 27" Solid Bars Standard Bar Hangers H12 12" - 24" Expandable Bars CB24 24" C-Channel Bars	
	15L 1250 Lm	27HK 2700K	DS2W1 1%, ELV/TRIAC, 120V	EMRM Remote Emergency Battery Pack Installer Responsible For EM Access		
	20L 1700 Lm	30HK 3000K				
	30L 2500 Lm	35HK 3500K				
	40L 3400 Lm	40HK 4000K				
	50L 4300 Lm	80 Minimum				
	Nominal Delivered Lumens at 35K with MW SO		30K 3000K			
		35K 3500K				
		40K 4000K				
		50K 5000K				

- Up to 4300 delivered lumens.
- Smooth light distribution for general illumination.
- Shallow plenum construction.
- L70 at >60,000 Hours at 70% lumens maintenance.
- 5 year warranty on fixture and electronics.
- Sustainable fixture.
- Damp or wet location listed.
- Ease of maintenance.
- Posi-lock trim retention torsion springs.

TRIM SPECIFICATION

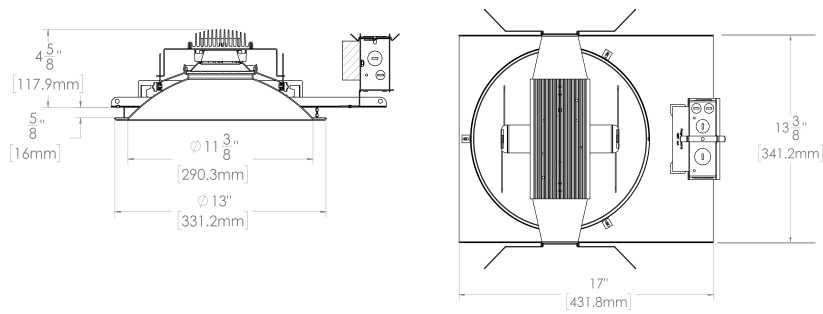
TRIM TYPE	FINISH	FLANGE FINISH	LENS	TRIM OPTIONS
AR1223FX	MW Matte White	MF Matching Flange NON MATCHING	SO Micro Prism Solite™ Lens	W Wet Location Gasket is Supplied with "W" Option
	MB Matte Black			
	SG Semi-Diffuse	WF White Flange		
	PT Platinum Silver	BF Black Flange		
CC Custom Color Consult Factory	SF Platinum Flange	CCF Custom Color Flange Consult Factory	GS Gasket	
See Color Guide for Full Range of Color Options		See Color Guide for Full Range of Color Options		



HOUSING DIMENSIONS

SGE12FX - NEW CONSTRUCTION

Non-IC rated, thermally protected frame-in kit for new construction.



TRIM DATA

AR1223FX - DOWNLIGHT



FEATURES

APPLICATIONS

FX series 12" diameter downlights, designed for general downlighting with smooth light distribution.

FEATURES

Shallow plenum construction. Companion retrofit and remodel fixtures available. Auto dim thermal protector for long term reliability. Zhaga international standard LED module for ease of maintenance and future replacement. Tool-less LED module, driver, and J-Box access. Multi-Bar mounting brackets, fit a variety of mounting bars. Posi-lock trim retention torsion springs. Integral 5/8" (.625) collar, works in ceiling up to 1" Deep. Intended for Non-IC new construction.

FINISH

Variety of powdercoat and anodized finishes available. Matte white flange is standard.

ELECTRONICS

LED system features high efficacy Philips LEDs. Standard CRI is >80. Drivers are overload and short circuit protected as well as thermally regulated. Sound rating A.

CONSTRUCTION

Housing/frame constructed of #20 ga. galvanized steel to resist corrosion. Self-flanged one piece trim spun from 0.063 3002 high purity aluminum and finished to specification. Passive machined aluminum heatsink.

CODE COMPLIANCE

BAA Compliant. Non-IC New Construction only. ETL certified to meet US and Canadian standards. Suitable for dry or damp locations. Optional Wet location listed trim. LM79/LM80 data available. Manufactured and tested to UL standards No. 1598.

RATED LIFE

Rated for 60,000 Hours at 70% lumen maintenance. (L70)



PHOTOMETRIC DATA - 12" ROUND DOWNLIGHT

SGE12FX 50L 35K XX AR1223FX MW WF SO

CANDLEPOWER CURVE TEST SP-01216	INTENSITY CANDELA 0° AZIMUTH	ZONAL LUMENS	SINGLE UNIT: PERFORMANCE DIRECT FOOTCANDLES BASED ON DOWNLIGHT ONLY				MULTIPLE UNITS: PERFORMANCE 80/50/20% REFLECTANCES INITIAL FOOTCANDLES AND WATTS PER SQUARE FOOT							
			Mounting Height AFF	FC at Center on Floor	Beam Diameter	FC at Beam Edge	Ceiling Height	Fixture Spacing	RCR 2		RCR 4			
	0°	0° - 10°	267	6%	8'	44 fc	12.2'	11 fc	10'	8'	74	0.68	39	0.44
	0°	0° - 20°	1003	23%	10'	28 fc	15.3'	7 fc	12'	10'	46	0.43	24	0.27
	5°	0° - 30°	2021	47%	12'	19 fc	18.3'	5 fc	16'	12'	33	0.30	27	0.30
	15°	0° - 40°	2995	70%	14'	14 fc	21.4'	4 fc	Delivered Illuminance Rating: (DIR)		108 FC per W/Sq. Ft.		90 FC per W/Sq. Ft.	
	25°	0° - 60°	4094	95%	16'	11 fc	24.4'	3 fc	Recessed mounting Square rooms used for multiple units: RCR 2: Length & Width = Ceiling Ht. - 2.5' x 5.00 RCR 4: Length & Width = Ceiling Ht. - 2.5' x 2.50 * Average Footcandles at 2.5' Above Floor					
	35°	0° - 80°	4289	100%	20'	7 fc	30.5'	2 fc						
	45°	0° - 90°	4293	100%	24'	5 fc	36.6'	1 fc						
	55°				28'	4 fc	42.7'	1 fc						
	90°	Total	4304	100%										

Delivered Lumens: 4304
Luminaire Watts: 38.4
LER: 112.08

CP at 0° (Nadir): 2798
CRI: 80+

Beam Angle: 75°
Spacing Ratio: 1.07

Lumen Multiplier: 10L x 0.18, 15L x 0.29, 20L x 0.39, 30L x 0.58, 40L x 0.78
CCT Multiplier: 27HK x 0.77, 30K x 0.96, 40K x 1.03, 50K x 1.04

See Page 1 for System Watts for all outputs

SGE12FX 50L 35K XX AR1223FX SG WF SO

CANDLEPOWER CURVE TEST SP-01216_1	INTENSITY CANDELA 0° AZIMUTH	ZONAL LUMENS	SINGLE UNIT: PERFORMANCE DIRECT FOOTCANDLES BASED ON DOWNLIGHT ONLY				MULTIPLE UNITS: PERFORMANCE 80/50/20% REFLECTANCES INITIAL FOOTCANDLES AND WATTS PER SQUARE FOOT							
			Mounting Height AFF	FC at Center on Floor	Beam Diameter	FC at Beam Edge	Ceiling Height	Fixture Spacing	RCR 2		RCR 4			
	0°	0° - 10°	261	6%	8'	43 fc	12.9'	10 fc	12'	8'	67	0.61	56	0.61
	0°	0° - 20°	987	23%	10'	27 fc	16.1'	6 fc	16'	10'	45	0.41	28	0.30
	5°	0° - 30°	2021	46%	12'	19 fc	19.3'	4 fc	20'	12'	27	0.25	16	0.18
	15°	0° - 40°	3040	70%	14'	14 fc	22.5'	3 fc	Delivered Illuminance Rating: (DIR)		109 FC per W/Sq. Ft.		91 FC per W/Sq. Ft.	
	25°	0° - 60°	4180	96%	16'	11 fc	25.7'	3 fc	Recessed mounting Square rooms used for multiple units: RCR 2: Length & Width = Ceiling Ht. - 2.5' x 5.00 RCR 4: Length & Width = Ceiling Ht. - 2.5' x 2.50 * Average Footcandles at 2.5' Above Floor					
	35°	0° - 80°	4334	100%	20'	7 fc	32.2'	2 fc						
	45°	0° - 90°	4335	100%	24'	5 fc	38.6'	1 fc						
	55°				28'	3 fc	45.1'	1 fc						
	90°	Total	4347	100%										

Delivered Lumens: 4347
Luminaire Watts: 38.4
LER: 113.20

CP at 0° (Nadir): 2727
CRI: 80+

Beam Angle: 78°
Spacing Ratio: 1.11

Lumen Multiplier: 10L x 0.18, 15L x 0.29, 20L x 0.39, 30L x 0.58, 40L x 0.78
CCT Multiplier: 27HK x 0.77, 30K x 0.96, 40K x 1.03, 50K x 1.04

See Page 1 for System Watts for all outputs

