



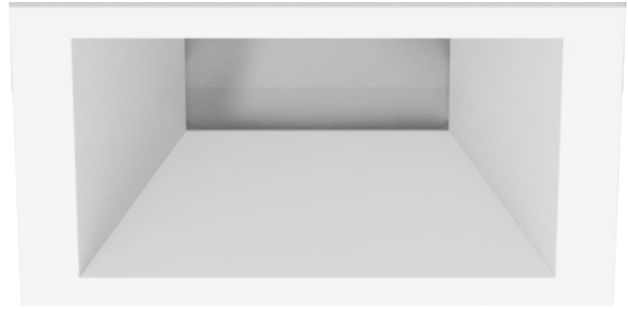
4" SQUARE DEEP DOWNLIGHT WILDLIFE FRIENDLY

UNIVERSAL HOUSINGS WITH INTERCHANGEABLE TRIMS

Spectrum's Enduro 4" recessed square downlight series features a trim and variety of options for accent and general illumination.

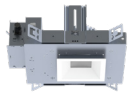
LUMENS AND WATTAGE CHART					
PART NUMBER	LUMENS	SOURCE LUMENS ¹	DELIVERED LUMENS ²	SYSTEM WATTS	LPW
SDD4F	TA5L	500	370	16	23
SDD4F	TD10L	1000	714	16	45

PROJECT: _____
TYPE: _____

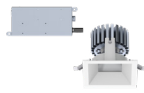


AVAILABLE HOUSING TYPES

SS4MO - New Construction



SS4MR - Remodel Construction



FIXTURE HOUSING SPECIFICATION

SERIES	LUMENS ¹	DRIVER / DIMMING / VOLTAGE	OPTIONS	MOUNTING
SS4MO New Construction	AMBER ONLY³	DO10 1%, 0-10V	EB Black Housing PR² Consult Factory	H12⁶ 12" - 24" Expandable Bars BH27 27" Solid Bars CB24 24" C-Channel Bars
SS4MR Remodel Construction	TA5L 500 Lm Amber Only			
	DUAL CIRCUIT⁴	DS2W ELV/MLV, 120V		
	TD10L CIR 1 1000 Lm at 3000K CIR 2 500 Lm Amber Only			

- Full Shielding.
- Die-cast aluminum trim with a wide variety of options.
- Deep regressed trim.
- Universal housing accepts all trim types, including N-Line trimless.
- 5 year warranty on fixture and electronics.
- Sustainable fixture.

AVAILABLE TRIM / MODULE TYPES



TRIM / MODULE SPECIFICATION

TRIM	CCT	FINISH	FLANGE FINISH	LENS ⁹	OPTIONS
SDD4F Downlight	AMBER ONLY³	MW⁷ Matte White MB Matte Black PT Platinum Silver BZ Bronze CH Charcoal OB Oil Rubbed Bronze AS Sapphire AM Malachite SN Sun Gold CO Copper Metallic GH Graphite CC⁸ Custom Color	WF White Flange MF Matching Flange	SO¹⁰ Micro Prism Solite™ Lens GL Clear Glass Lens FG Frosted Glass Lens	PR² Consult Factory
	DUAL CIRCUIT⁴				
	30K CIR 1 1000 Lm at 3000K CIR 2 500 Lm Amber Only				

EXAMPLE: SS4MOTA5LDS2W1/H12/SDD4FAMBMMWWFSO

EXAMPLE: SS4MOTD10LDS2W1/H12/SDD4F30KMMWWFSO

NOTES:
¹ Nominal Source Lumens ² Nominal Delivered Lumens ³ Specify with TA Only ⁴ Specify with TD Only, TD/Dual Circuit Option Requires Dedicated on Site Controls by Others, Controls by Others Are Not to Allow Both Circuits to be Energized Simultaneously, Consult Factory for More Information ⁵ Contact Factory ⁶ Standard Bar Hangers ⁷ Standard Finish ⁸ Contact Factory for Special Finishes ⁹ Lens is Required ¹⁰ Standard Lens

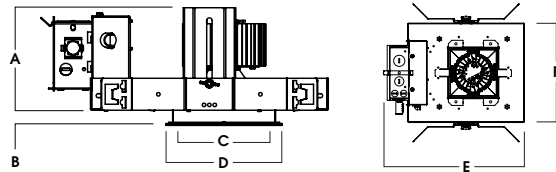
Dimensions and values shown are nominal. Spectrum Lighting continually works to improve products and reserves the right to make changes which may alter the performance or appearance of products.



HOUSING DIMENSIONS

SS4MO - NEW CONSTRUCTION

Non-IC rated, thermally protected frame-in kit for new construction. Non-IC designation requires insulation must be minimum of 3" from housing.



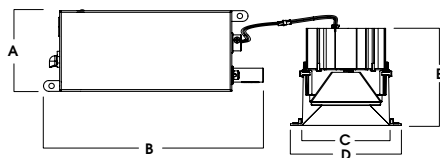
A	B	C	D	E	F
4.8	.625	4.4	5.4	13.1	9.5
121.9 mm	15.2 mm	117.8 mm	137.2 mm	332.7 mm	241.3 mm

Fixture Weight: 7 lbs

Ceiling Cutout: 5" Sq

SS4MR - REMODEL CONSTRUCTION

Non-IC rated frame-in kit for existing construction. Non-IC designation requires insulation must be minimum of 3" from housing.



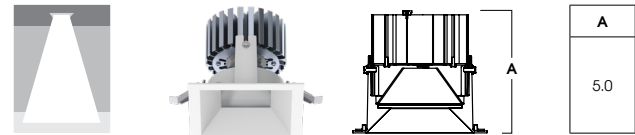
A	B	C	D	E
3.8	10.2	4.4	5.4	5.0
96.5 mm	259.1 mm	117.8 mm	137.2 mm	127.0 mm

Fixture Weight: 5 lbs

Ceiling Cutout: 5" Sq

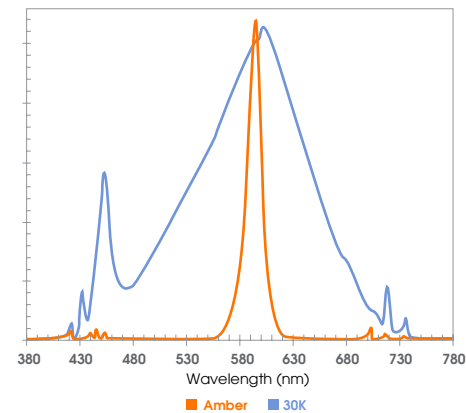
TRIM / MODULE DATA

SDD4F - DOWNLIGHT MODULE



A
5.0

SPECTRAL POWER DISTRIBUTION COMPARISON



FEATURES

FRAME-IN KIT

Precision Die-formed 20 gauge galvanized steel housing and integral junction box with (3) 5/8", (3) 7/8" and (2) 1 1/8" knockouts. Junction box capacity: 8 12AWG rated for 90 °C. Tool-less driver and junction box access for ease of maintenance. Posi-loc trim retention springs for 5/8"-1" ceiling thickness.

MOUNTING

A variety of mounting bars are available (excluding remodel). Ceiling materials must be rigid to support luminaire frame.

TRIM

Self-flanged, one-piece, die-cast aluminum finished in a variety of powdercoat options. Designed for wet location. Specify finish and flange finish. For trimless options see N-Line.

REMODEL

Features tethered power supply and junction box with sheathed wire.

ELECTRONICS

Full shielding. Single circuit, amber only option is available. Amber LEDs are monochromatic, narrow spectral bandwidth that only emit long wavelengths >560 nm and <625 nm. Proprietary 2-circuit LED system: Circuit 1 is 3000K at 1000 lumens, Circuit 2 is Amber only at 500 lumens. 3000K white light is 3-step MacAdam Ellipse binning, with 80+ CRI.

EMERGENCY

Contact Factory.

COLOR VARIATION

Standard CRI (80) within 3-step MacAdam Ellipse.

LISTINGS

ETL Certified to meet US and Canadian Standards. Manufactured and tested to UL standard No. 1598/8750. BAA compliant. Suitable for wet locations. International Dark-Sky Association approved fixture.

WARRANTY

Fixtures, LEDs and drivers carry 5 year Spectrum warranty, as well as individual OEM warranty. Warranty is 5 years from date of manufacturing. LED system rated for operation in an ambient temperatures up to 25 °C.



PHOTOMETRIC DATA - 4" SQUARE DEEP DOWNLIGHT

SS4Mx TA5L E1 SDD4x AMB MW SO

CANDLEPOWER CURVE TEST SP-00787_2	INTENSITY CANDELA 0° AZIMUTH	ZONAL LUMENS		SINGLE UNIT: PERFORMANCE INITIAL FOOTCANDLES BASED ON IES BEAM ANGLE				MULTIPLE UNITS: PERFORMANCE 80/50/20% REFLECTANCES INITIAL FOOTCANDLES AND WATTS PER SQUARE FOOT						
		0° - 10°	0° - 20°	Mounting Height AFF	FC at Center on Floor	Beam Diameter	FC at Beam Edge	Ceiling Height	Fixture Spacing	RCR 2		RCR 4		
	0.00°	23	6%	5.5'	8 fc	7.9'	4 fc	9'	6'	9	0.37	10	0.54	
	0.00°	242		6.5'	6 fc	9.3'	3 fc	12'	8'	6	0.25	5	0.25	
	5.00°	241		7.5'	4 fc	10.7'	2 fc	16'	12'	3	0.12	2	0.12	
	10.00°	236		8.5'	3 fc	12.1'	2 fc	Delivered Illuminance Rating: (DIR)						
	15.00°	227		10.0'	2 fc	14.3'	1 fc						23 FC per W/Sq. Ft.	
	20.00°	212		12.0'	2 fc	17.1'	1 fc	Recessed Mounting Square rooms used for multiple units: - RCR 2: Length & Width = Ceiling Ht. -2.5' x 5.00 - RCR 4: Length & Width = Ceiling Ht. -2.5' x 2.50 + Average Footcandles at 2.5' Above Floor						
	30.00°	158		14.0'	1 fc	20.0'	1 fc							
	40.00°	94		16.0'	1 fc	22.9'	0 fc							
	50.00°	46		Total	370	100%								
	60.00°	22												
	70.00°	7												
	80.00°	2												
90.00°	1													

Delivered Lumens: 370
Luminaire Watts: 15.8
LER: 23.42

CP at 0deg (Nadir): 242
CRI: N/A, Amber Light

Beam Angle: 71.01
Spacing Ratio: 1.03

Lumen Multiplier: N/A
CCT Multiplier: N/A

SS4Mx TD10L E1 SDD4x 30K MW SO

CANDLEPOWER CURVE TEST SP-00788_2	INTENSITY CANDELA 0° AZIMUTH	ZONAL LUMENS		SINGLE UNIT: PERFORMANCE INITIAL FOOTCANDLES BASED ON IES BEAM ANGLE				MULTIPLE UNITS: PERFORMANCE 80/50/20% REFLECTANCES INITIAL FOOTCANDLES AND WATTS PER SQUARE FOOT						
		0° - 10°	0° - 20°	Mounting Height AFF	FC at Center on Floor	Beam Diameter	FC at Beam Edge	Ceiling Height	Fixture Spacing	RCR 2		RCR 4		
	0.00°	47	7%	5.5'	16 fc	7.7'	8 fc	9'	6'	17	0.38	20	0.54	
	0.00°	488		6.5'	12 fc	9.1'	6 fc	12'	8'	11	0.25	9	0.25	
	5.00°	482		7.5'	9 fc	10.6'	4 fc	16'	12'	6	0.13	5	0.13	
	10.00°	475		8.5'	7 fc	12.0'	3 fc	Delivered Illuminance Rating: (DIR)						
	15.00°	459		10.0'	5 fc	14.1'	2 fc						44 FC per W/Sq. Ft.	
	20.00°	425		12.0'	3 fc	16.9'	2 fc	Recessed Mounting Square rooms used for multiple units: - RCR 2: Length & Width = Ceiling Ht. -2.5' x 5.00 - RCR 4: Length & Width = Ceiling Ht. -2.5' x 2.50 + Average Footcandles at 2.5' Above Floor						
	30.00°	312		14.0'	2 fc	19.7'	1 fc							
	40.00°	188		16.0'	2 fc	22.5'	1 fc							
	50.00°	86		Total	714	100%								
	60.00°	37												
	70.00°	10												
	80.00°	1												
90.00°	1													

Delivered Lumens: 714
Luminaire Watts: 15.9
LER: 44.91

CP at 0deg (Nadir): 488
CRI: 80

Beam Angle: 70.27
Spacing Ratio: 1.03

Lumen Multiplier: only 10L available
CCT Multiplier: only 30K available



PHOTOMETRIC DATA - 4" SQUARE DEEP DOWNLIGHT

SS4Mx TA5L E1 SDD4x AMB MW GL

CANDLEPOWER CURVE TEST SP-00787_1	INTENSITY CANDELA 0° AZIMUTH	ZONAL LUMENS	SINGLE UNIT: PERFORMANCE INITIAL FOOTCANDLES BASED ON IES BEAM ANGLE				MULTIPLE UNITS: PERFORMANCE 80/50/20% REFLECTANCES INITIAL FOOTCANDLES AND WATTS PER SQUARE FOOT								
			Mounting Height AFF	FC at Center on Floor	Beam Diameter	FC at Beam Edge	Ceiling Height	Fixture Spacing	RCR 2		RCR 4				
	0.00°	234	0° - 10°	23	6%	5.5'	8 fc	8.4'	4 fc	9'	6'	8	0.37	10	0.54
	5.00°	235	0° - 20°	85	23%	6.5'	6 fc	10.0'	3 fc	12'	8'	6	0.25	5	0.25
	10.00°	230	0° - 30°	175	48%	7.5'	4 fc	11.5'	2 fc	16'	12'	3	0.12	2	0.12
	15.00°	223	0° - 40°	261	71%	8.5'	3 fc	13.0'	2 fc	Delivered Illuminance Rating: (DIR)		23 FC per W/Sq. Ft.		19 FC per W/Sq. Ft.	
	20.00°	213	0° - 60°	346	95%	10.0'	2 fc	15.4'	1 fc	Recessed Mounting Square rooms used for multiple units: - RCR 2: Length & Width = Ceiling Ht. -2.5' x 5.00 - RCR 4: Length & Width = Ceiling Ht. -2.5' x 2.50 + Average Footcandles at 2.5' Above Floor					
	30.00°	167	0° - 80°	363	100%	12.0'	2 fc	18.4'	1 fc						
	40.00°	96	0° - 90°	365	100%	14.0'	1 fc	21.5'	1 fc						
	50.00°	42	Total	365	100%	16.0'	1 fc	24.6'	0 fc						
	60.00°	20													
	70.00°	8													
	80.00°	1													
	90.00°	1													

Delivered Lumens: **365**
Luminaire Watts: **15.8**
LER: **23.10**

CP at 0deg (Nadir): **234**
CRI: **N/A, Amber Light**

Beam Angle: **72.7**
Spacing Ratio: **1.1**

Lumen Multiplier: **N/A**
CCT Multiplier: **N/A**

SS4Mx TD10L E1 SDD4x 30K MW GL

CANDLEPOWER CURVE TEST SP-00788_1	INTENSITY CANDELA 0° AZIMUTH	ZONAL LUMENS	SINGLE UNIT: PERFORMANCE INITIAL FOOTCANDLES BASED ON IES BEAM ANGLE				MULTIPLE UNITS: PERFORMANCE 80/50/20% REFLECTANCES INITIAL FOOTCANDLES AND WATTS PER SQUARE FOOT								
			Mounting Height AFF	FC at Center on Floor	Beam Diameter	FC at Beam Edge	Ceiling Height	Fixture Spacing	RCR 2		RCR 4				
	0.00°	470	0° - 10°	45	6%	5.5'	16 fc	8.1'	8 fc	9'	6'	17	0.38	20	0.54
	5.00°	466	0° - 20°	174	24%	6.5'	11 fc	9.6'	5 fc	12'	8'	11	0.25	9	0.25
	10.00°	463	0° - 30°	354	50%	7.5'	8 fc	11.1'	4 fc	16'	12'	6	0.13	5	0.13
	15.00°	457	0° - 40°	525	74%	8.5'	6 fc	12.6'	3 fc	Delivered Illuminance Rating: (DIR)		44 FC per W/Sq. Ft.		37 FC per W/Sq. Ft.	
	20.00°	432	0° - 60°	687	96%	10.0'	5 fc	14.8'	2 fc	Recessed Mounting Square rooms used for multiple units: - RCR 2: Length & Width = Ceiling Ht. -2.5' x 5.00 - RCR 4: Length & Width = Ceiling Ht. -2.5' x 2.50 + Average Footcandles at 2.5' Above Floor					
	30.00°	323	0° - 80°	712	100%	12.0'	3 fc	17.7'	2 fc						
	40.00°	183	0° - 90°	713	100%	14.0'	2 fc	20.7'	1 fc						
	50.00°	74	Total	714	100%	16.0'	2 fc	23.6'	1 fc						
	60.00°	33													
	70.00°	9													
	80.00°	1													
	90.00°	1													

Delivered Lumens: **714**
Luminaire Watts: **15.9**
LER: **44.91**

CP at 0deg (Nadir): **470**
CRI: **80**

Beam Angle: **72.35**
Spacing Ratio: **1.07**

Lumen Multiplier: **only 10L available**
CCT Multiplier: **only 30K available**



PHOTOMETRIC DATA - 4" SQUARE DEEP DOWNLIGHT

SS4Mx TA5L E1 SDD4x AMB MW FG

CANDLEPOWER CURVE TEST SP-00787	INTENSITY CANDELA 0° AZIMUTH	ZONAL LUMENS	SINGLE UNIT: PERFORMANCE INITIAL FOOTCANDLES BASED ON IES BEAM ANGLE				MULTIPLE UNITS: PERFORMANCE 80/50/20% REFLECTANCES INITIAL FOOTCANDLES AND WATTS PER SQUARE FOOT							
			Mounting Height AFF	FC at Center on Floor	Beam Diameter	FC at Beam Edge	Ceiling Height	Fixture Spacing	RCR 2		RCR 4			
	0.00°	0° - 10°	19	6%	5.5'	7 fc	7.7'	3 fc	9'	4'	18	0.96	15	0.96
	0.00°	0° - 20°	70	23%	6.5'	5 fc	9.1'	2 fc	12'	6'	8	0.45	7	0.45
	5.00°	0° - 30°	138	46%	7.5'	4 fc	10.5'	2 fc	16'	10'	3	0.17	2	0.12
	10.00°	0° - 40°	202	67%	8.5'	3 fc	11.9'	1 fc	Delivered Illuminance Rating: (DIR)		19 FC per W/Sq. Ft.		15 FC per W/Sq. Ft.	
	15.00°	0° - 60°	282	93%	10.0'	2 fc	13.9'	1 fc	Recessed Mounting Square rooms used for multiple units: - RCR 2: Length & Width = Ceiling Ht. -2.5' x 5.00 - RCR 4: Length & Width = Ceiling Ht. -2.5' x 2.50 + Average Footcandles at 2.5' Above Floor					
	20.00°	0° - 80°	300	100%	12.0'	1 fc	16.7'	1 fc						
	30.00°	0° - 90°	302	100%	14.0'	1 fc	19.5'	0 fc						
	40.00°	Total	302	100%	16.0'	1 fc	22.3'	0 fc						
	50.00°													
	60.00°													
	70.00°													
	80.00°													
90.00°														

Delivered Lumens: **302**
Luminaire Watts: **15.8**
LER: **19.11**

CP at 0deg (Nadir): **200**
CRI: **N/A, Amber Light**

Beam Angle: **69.49**
Spacing Ratio: **0.99**

Lumen Multiplier: **N/A**
CCT Multiplier: **N/A**

SS4MOx TD10L E1 SDD4x 30K MW FG

CANDLEPOWER CURVE TEST SP-00788	INTENSITY CANDELA 0° AZIMUTH	ZONAL LUMENS	SINGLE UNIT: PERFORMANCE INITIAL FOOTCANDLES BASED ON IES BEAM ANGLE				MULTIPLE UNITS: PERFORMANCE 80/50/20% REFLECTANCES INITIAL FOOTCANDLES AND WATTS PER SQUARE FOOT							
			Mounting Height AFF	FC at Center on Floor	Beam Diameter	FC at Beam Edge	Ceiling Height	Fixture Spacing	RCR 2		RCR 4			
	0.00°	0° - 10°	39	6%	5.5'	13 fc	7.9'	6 fc	9'	6'	14	0.38	16	0.54
	0.00°	0° - 20°	142	24%	6.5'	10 fc	9.3'	5 fc	12'	8'	9	0.25	8	0.25
	5.00°	0° - 30°	279	47%	7.5'	7 fc	10.7'	3 fc	16'	12'	5	0.13	4	0.13
	10.00°	0° - 40°	408	68%	8.5'	6 fc	12.2'	3 fc	Delivered Illuminance Rating: (DIR)		37 FC per W/Sq. Ft.		30 FC per W/Sq. Ft.	
	15.00°	0° - 60°	566	95%	10.0'	4 fc	14.3'	2 fc	Recessed Mounting Square rooms used for multiple units: - RCR 2: Length & Width = Ceiling Ht. -2.5' x 5.00 - RCR 4: Length & Width = Ceiling Ht. -2.5' x 2.50 + Average Footcandles at 2.5' Above Floor					
	20.00°	0° - 80°	595	100%	12.0'	3 fc	17.2'	1 fc						
	30.00°	0° - 90°	597	100%	14.0'	2 fc	20.1'	1 fc						
	40.00°	Total	597	100%	16.0'	2 fc	22.9'	1 fc						
	50.00°													
	60.00°													
	70.00°													
	80.00°													
90.00°														

Delivered Lumens: **597**
Luminaire Watts: **15.9**
LER: **37.55**

CP at 0deg (Nadir): **403**
CRI: **80**

Beam Angle: **71.22**
Spacing Ratio: **1.01**

Lumen Multiplier: **only 10L available**
CCT Multiplier: **only 30K available**

