



12" ROUND DIRECT GENERAL ILLUMINATION



C1220GV - WALL MOUNT

APPLICATION

12" round x 20" high Theatrical Pro Pendant for auditorium and area lighting.

FEATURES

Architectural high performance LED Cylinder luminaire. Designed to illuminate auditoriums, houses of worship and other spaces where LED color quality and control are required. This series offers .01% dim to black as well as DMX, ELV and DALI dimming. Rugged design with flexible mounting, finish and LED options make these extremely versatile fixtures.

FINISH

Multi-stage polyester powder-coat process applied on our dedicated paint lines. See mounting and color pages for standard finishes. All exposed materials are chromate pretreated to resist corrosion.

ELECTRONICS

GV LED system features high brightness white Samsung LED's. 3-step MacAdam Ellipse binning. Standard CRI: 85+. Higher CRI, R9 and custom LED configurations are available; consult factory. Variety of electronic 120V/277V and dimming drivers.

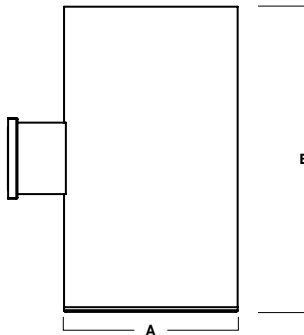
DMX controls available.

CONSTRUCTION

Fabricated seamless aluminum fixture housing. Specular primary optical reflectors provide high efficiency illumination. Stainless steel hardware with galvanized steel brackets to resist corrosion. One piece reflector trim spun from .063 thick high purity aluminum and finished to specification.

CODE COMPLIANCE

BAA compliant. ETL certified to meet US and Canadian standards. Suitable for dry or damp locations. Wet Location Option. Manufactured and tested to UL standards No. 1598/8750.



A	B
11.7 297.2 mm	20.1 510.5 mm

LUMENS / WATTAGE DATA				
PART NUMBER	SOURCE LUMENS ¹	DELIVERED LUMENS ²	SYSTEM WATTS	LPW
C1220GV15L	1500	1041	10	104
C1220GV27L	2700	1818	18	101
C1220GV37L	3700	2666	26	103
C1220GV55L	5500	3927	39	101

SERIES	LUMENS ¹	CCT	DRIVER / DIMMING ³	OPTIONS ⁶	TRIM	MOUNTING ⁹	FINISH ¹¹					
C1220GV	15L	1500 Lm	27K 2700K	EX Electronic Driver, 120V/277V DS10X 10%, 0-10V, 120V/277V DO10X 1%, 0-10V, 120V/277V DS2W1 ELV / MLV,120V DLTE1⁴ Lutron 2-Wire Forward Phase (MLV), 120V DL3EX⁴ 1%, Lutron® EcoSystem® Fade, 120V/277V EDO1X 0.1%, eldoLED 120V/277V DALIX DALI Control DMXS⁵ DMX Standard Configuration DMXC⁵ DMX Non-Standard Custom	FS Fuse Holder and Fuse WL Wet Location	TSG⁷ Semi Diffuse Low Indescent Clear TCY Same Color as Cylinder TCC Custom Color	WM3 Wall Mount 3" Extension WM5 Wall Mount 5" Extension	MW¹² Matte White MB¹² Matte Black PT¹² Platinum Silver CC Custom Color				
	27L	2700 Lm	30K 3000K						SO⁸ Micro Prism Solite™ Lens FG Frosted Glass Lens	EMIT¹⁰ 7W Emergency Battery Test Switch EMRM 7W Remote EM		
	37L	3700 Lm	35K 3500K								EMERGENCY BATTERY OPTIONS	
	55L	5500 Lm	40K 4000K 50K 5000K									

EXAMPLE: C1220GV37L35KDS10X/TSGSO/WM3/MW

NOTES:
 1 Nominal Source Lumens at 35K 2 Nominal Delivered Lumens at 35K with TSG-SO 3 Contact Factory for Additional Options 4 37L Max 5 Contact Factory 6 See Product Options Page For Details 7 Standard Finish 8 Standard Lens 9 See Mounting Page for Details on Components and Finishes 10 EMIT Up to 37L 11 Reference Color Sheet Located on Product Webpage for Full List of Available Colors 12 Standard Finishes



PROJECT: _____
 TYPE: _____



Dimensions and values shown are nominal. Spectrum Lighting continually works to improve products and reserves the right to make changes which may alter the performance or appearance of products.

12" ROUND DIRECT

GENERAL ILLUMINATION / FIXTURE OPTIONS



STANDARD FINISHES

MW
MATTE WHITE



MB
MATTE BLACK

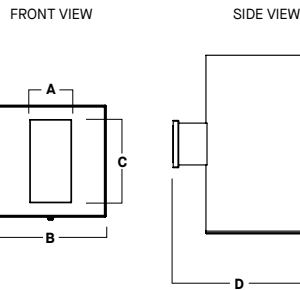


PT
PLATINUM SILVER



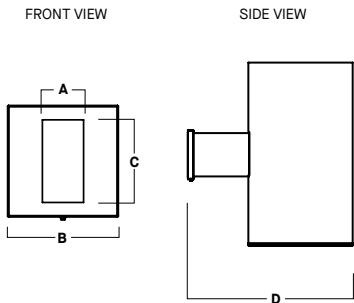
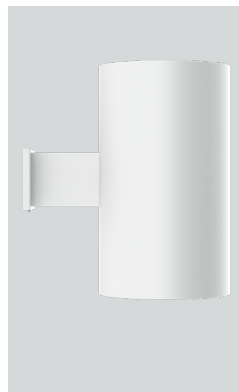
WALL MOUNT DETAIL

WM3
WALL MOUNT 3" EXTENSION



A	B	C	D
2.4	6.4	4.7	18.2
61.0 mm	162.6 mm	119.4 mm	462.3 mm

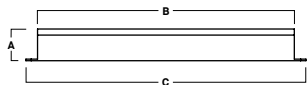
WM5
WALL MOUNT 5" EXTENSION



A	B	C	D
2.4	6.4	4.7	
61.0 mm	162.6 mm	119.4 mm	

REMOTE EMERGENCY BATTERY OPTIONS

EMRM* - 7W REMOTE EMERGENCY BATTERY
(50' MAX)



A	B	C
1.3	12.6	13.0

*OTHER EM BATTERY SIZES AVAILABLE. CONSULT FACTORY

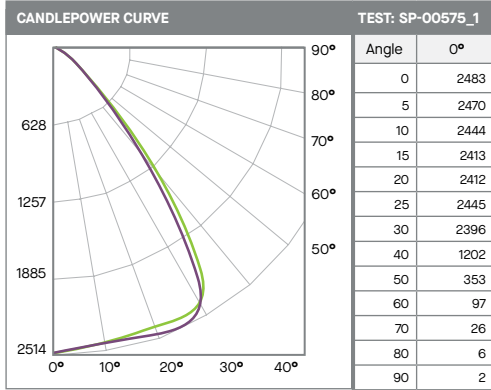
12" ROUND DIRECT

GENERAL ILLUMINATION / PHOTOMETRIC DATA



C12xxGV-55L35K-EX-TSG-SO

55L - 85 CRI



ZONAL LUMENS

0-10	236	6%
0-20	931	24%
0-30	2071	53%
0-40	3190	81%
0-60	3853	98%
0-80	3923	100%
0-90	3927	100%
Total Lumens	3927	100%

SINGLE UNIT: PERFORMANCE
INITIAL FOOTCANDLES AND BEAM ANGLE DIAMETERS

Mounting Height*	FC at Center	Diameter of Beam**	FC at Beam**
5.5'	82	7.7'	28
6.5'	59	9.1'	20
7.5'	44	10.5'	15
8.5'	34	11.9'	12
10.0'	25	14.0'	8
12.0'	17	16.8'	6
14.0'	13	19.6'	4
16.0'	10	22.4'	3

* From aperture to horizontal surface below.
** At IESNA defined Beam Angle, to 50% Max. CP.

Green: 0-180
Purple: 45-225

Delivered Lumens: 3927 CP @ 0° (Nadir): 2483
Luminaire Watts: 39 Beam Angle: 70°
LER: 101 CRI: 84

Spacing Ratio: 1.32
Output Multipliers: 15L x 0.27, 27L x 0.49, 37L x 0.67