



5" PULL DOWN ACCENT / NON-IC

XT SERIES / 3000 LUMENS



SGP5XT - TRIM FLANGE / NON-IC RATED

APPLICATION

Pull Down adjustable accent light for retail, residential and commercial ceiling.

FEATURES

LED assembly pulls down to 35° and rotates 360° for optimal aiming. Single optical system for smooth light distribution and focus control. Quick change LED module with interchangeable optics for job site adjustment and fixture maintenance. Shallow plenum design. Tool-less driver and j-box access. Post-lock trim retention torsion springs. Front loading bezel for lens or louver accessories.

TRIM FINISH

A variety of architectural powdercoat and anodized finishes are available.

Matte White flange is standard.

ELECTRONICS

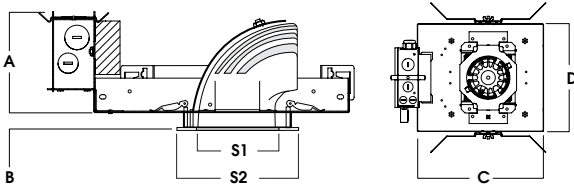
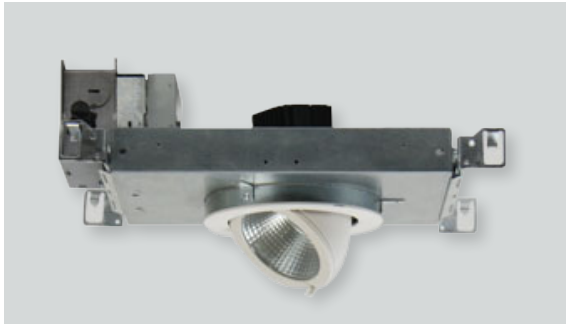
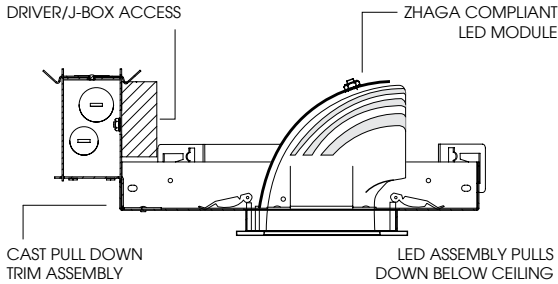
LED system features Xicato LED module with proprietary phosphor technology that provides consistent, stable color with CCT control of +/- 100K over life of the light engine. Base CRI is 83 with 2 MacAdam Ellipse binning. High CRI is 98 with 1 MacAdam Ellipse binning. Variety of electronic 120V/277V and dimming drivers.

CONSTRUCTION

Housing/frame constructed of #20 ga. galvanized steel to resist corrosion. Die cast three piece trim. Spun high performance internal aluminum reflector.

CODE COMPLIANCE

BAA Compliant. Non-IC rated. ETL certified to meet US and Canadian standards. Suitable for dry or damp locations. Manufactured and tested to UL standards No. 1598/8750.



A	B	C	D	S1	S2
4.1	625	12.9	9.6	3.37	4.25
104.1 mm	15.9 mm	396.2 mm	279.4 mm	6.5 mm	107.0 mm

WATTAGE TO LUMENS UPDATE			
CURRENT PART NUMBER EXAMPLE	PREVIOUS PART NUMBER EXAMPLE	SOURCE LUMENS ¹	SYSTEM WATTS
SGP5XT10L	SGP5UDLEDX115W	1000	9.1
SGP5XT13L	SGP5UDLEDX120W	1300	13.0
SGP5XT20L	SGP5UDLEDX133W	2000	21.7
SGP5XT30L	SGP5UDLEDX152W	3000	32.6

SERIES	LUMENS ¹	CCT	DRIVER / DIMMING / VOLTAGE ²	OPTIONS ⁴	TRIM	LUMENS ¹	CCT	BEAM	FINISH	TRIM OPTIONS					
SGP5XT	83 CRI		E Electronic Driver DS10_ 10% 0-10V DO10_ 1% 0-10V DS2W1 1%, ELV/MLV, 120V DLTE1 1% Lutron® 2-Wire Forward Phase, 120V DL3E_ 1% Lutron® EcoSystem®, Fade EL10_ 1%, eldoLED ED01_ 0.1%, eldoLED DALI_ DALI Control DMXS_3 DMX Standard Configuration DMXC_3 DMX Non-Standard Custom	1 120V 2 277V	H12⁵ 12" - 24" Expandable Bars H06 6" - 12" Expandable Bars FS Fusing CR Corrosion Resistant PR⁶ Deep Ceiling Extension TBC T-Bar Clips EM Emergency Battery Pack GR Goof Ring EB Black Housing	PD05XT	83 CRI		MD 24° WD 38°	MW Matte White MB Matte Black PT Platinum Silver CC⁷ Custom Color	GL⁸ Clear Glass Lens SO Micro Prism Solite™ Lens FG Frosted Glass Lens GS Gasket				
	10L	1000 Lm					27K	2700K				10L	1000 Lm	27K	2700K
	13L	1300 Lm					30K	3000K				13L	1300 Lm	30K	3000K
	20L	2000 Lm					35K	3500K				20L	2000 Lm	35K	3500K
	30L	3000 Lm	40K	4000K	30L		3000 Lm	40K				4000K			
	98 CRI						98 CRI								
	10L	1000 Lm	27HK	2700K	10L	1000 Lm	27HK	2700K							
	13L	1300 Lm	30HK	3000K	13L	1300 Lm	30HK	3000K							
	20L	2000 Lm	35HK	3500K	20L	2000 Lm	35HK	3500K							
	30L	3000 Lm	40HK	4000K	30L	3000 Lm	40HK	4000K							

EXAMPLE: SGP5XT10L35KE1H12/PD05XT10L27KMDMWSO

NOTES:

1 Nominal Source Lumens at Any CCT 2 Contact Factory for Additional Options 3 Contact Factory 4 See Product Options Page for Details 5 Standard Bar Hangers 6 Contact Factory 7 Contact Factory for Special Finishes 8 Standard Lens



PROJECT: _____
 TYPE: _____



Dimensions and values shown are nominal. Spectrum Lighting continually works to improve products and reserves the right to make changes which may alter the performance or appearance of products.