



2" ROUND DEEP DOWNLIGHT 2000 LUMENS MAX

UNIVERSAL HOUSINGS WITH INTERCHANGEABLE TRIMS

Spectrum's A Spec 2" recessed round downlight series features a 2" regressed trim and variety of options for accent and general illumination.

LUMENS AND WATTAGE CHART					
PART NUMBER	LUMENS	SOURCE LUMENS ¹	DELIVERED LUMENS ²	SYSTEM WATTS	LPW
RDD2F	XT10L	1000	691	11.1	62
RDD2F	XT13L	1300	930	15.0	62
RDD2F	XT20L	2000	1431	23.7	60

PROJECT: _____
QUANTITY: _____ TYPE: _____

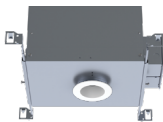


AVAILABLE HOUSING TYPES

SR2DMO - New Construction / 20L Max



SR2DMI - IC New Construction / 13L Max



SR2DMR - Remodel Construction / 20L Max



FIXTURE HOUSING SPECIFICATION

SERIES		LUMENS ¹		DRIVER / DIMMING / VOLTAGE			OPTIONS	
SR2DMO	New Construction	XT10L	1000 Lm	E₋ Electronic Driver DS10₋ 10%, 0-10V DS2W1 ELV/MLV, 120V	1 120V 2 277V	H12² 12" - 24" Expandable Bars EB Black Housing EMRM Remote Emergency Battery Pack		
SR2DMI³	IC New Construction	XT13L	1300 Lm					
SR2DMR	Remodel Construction	XT20L	2000 Lm					
		XN BEAM						
		XN10L	1000 Lm					
		XN13L⁴	1300 Lm					

- Die-cast aluminum trim with a wide variety of options.
- Deep regressed trim.
- Universal housing accepts all trim types.
- Performance Xicato LED module for superior reliability and color consistency.
- Interchangeable optics and lenses.
- 5 year warranty on fixture and electronics.
- 10 year warranty on LED CCT.
- Sustainable fixture.
- Zhaga International Standard LED Module for future upgrades.
- 83CRI 2SDCM, 98CRI 1x2SDCM best in industry.

AVAILABLE TRIM / MODULE TYPES



TRIM / MODULE SPECIFICATION

TRIM	CCT	OPTICS	TRIM FINISH ⁷	OPTIONS
RDD2F Downlight	83 CRI	XN⁶ 16° MD 30° WD 40°	MW⁸ Matte White MB Matte Black PT Platinum Silver BZ Bronze CH Charcoal OB Oil Rubbed Bronze AS Sapphire AM Malachite SN Sun Gold CO Copper Metallic GH Graphite CC⁹ Custom Color	NL No Lens GL¹⁰ Clear Glass Lens SO Micro Prism Solite™ Lens FG Frosted Glass Lens WF¹¹ White Flange
	27K 2700K			
	30K 3000K			
	35K 3500K			
	40K 4000K			
	98 CRI ARTIST			
	27HK 2700K			
	30HK 3000K			
	35HK 3500K			
	40HK 4000K			

EXAMPLE: SR2DMOXT10LDS2W1/H12/RDD2F27KMDCHNL

NOTES:

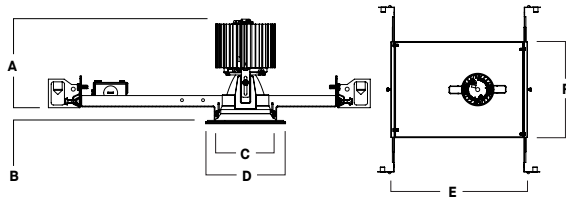
1 Nominal Source Lumens at Any CCT 2 Nominal Delivered Lumens 83 CRI at Any CCT with MD-MW-GL Trim 3 IC New Construction not Available in XN Beam or XT20L
4 Not Available with HK 5 Standard Bar Hanger 6 9mm, 13L Max, All XN Draw More Watts Than Other Optics; See Photometry 7 Inside Trim And Flange Will Match Color Specified 8 Standard Finish 9 Contact Factory for Special Finishes 10 Standard Lens 11 Otherwise Flange Is Same Color As Interior Of Trim



HOUSING DIMENSIONS

SR2DMO - NEW CONSTRUCTION / 20L MAX

Non-IC rated, thermally protected frame-in kit for new construction. Non-IC designation requires insulation must be minimum of 3" from housing.



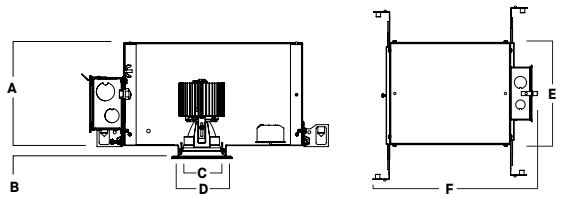
A	B	C	D	E	F
4.0	.625	1.8	3.7	12.9	9.1
101.6 mm	15.2 mm	45.7 mm	93.98 mm	327.7 mm	231.1 mm

Fixture Weight: 4.0 lbs

Ceiling Cutout: Ø 3"

SR2DMI - IC NEW CONSTRUCTION / 13L MAX

IC rated frame-in kit for new construction with direct insulation contact.



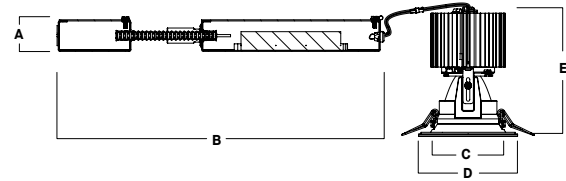
A	B	C	D	E	F
6.4	.625	1.8	3.7	9.8	15.4
162.6 mm	15.2 mm	45.7 mm	93.98 mm	248.9 mm	391.2 mm

Fixture Weight: 5.0 lbs

Ceiling Cutout: Ø 3"

SR2DMR - REMODEL CONSTRUCTION / 20L MAX

Non-IC rated frame-in kit for existing construction. Non-IC designation requires insulation must be minimum of 3" from housing.



A	B	C	D	E
1.5	13.9	1.8	3.7	4.6
38.1 mm	353.1 mm	45.7 mm	93.98 mm	116.8 mm

Fixture Weight: 2.0 lbs

Ceiling Cutout: Ø 3"

FEATURES

NEW CONSTRUCTION

Precision Die-formed 20 gauge galvanized steel housing and integral junction box with (1) 7/8" knockout for Non-IC (not designed for through branch circuit wiring) and (1) 5/8", (3) 7/8" and 2 (1") knockouts for IC. Junction box capacity: 8 12AWG rated for 90 °C. Tool-less driver and junction box access for ease of maintenance. Posi-loc trim retention springs for 5/8"-1" ceiling thickness. For thicker ceilings consult factory.

REMODEL CONSTRUCTION

Features tethered power supply and junction box with sheathed wire, (1) 7/8" knockout, and (1) 5/8" Knockout.

MOUNTING

A variety of mounting bars are available (excluding remodel). Ceiling materials must be rigid to support luminaire frame.

DRIVER

Several constant current dimming drivers are available. Power factor >.9 typical, 50/60Hz, 350-1050mA.

TRIM

Self-flanged, one-piece, die-cast aluminum finished in a variety of powdercoat options. Inside trim and flange are finished in same color unless otherwise specified (WF= White Flange).

LUMEN OUTPUT

Optics maintain 1000-2000 lumens range.

LED

Zhaga compatible high performance Xicato module. Proprietary phosphor technology provides consistent and stable color with CCT control of +/- 100K over life of light engine.

EMERGENCY

Remote 7W emergency battery options are available. Operates for 90 minutes and produces nominal 450 lumens.

FUSING

Integral optional fast blow fuse with fuse holder.

COLOR VARIATION

Standard CRI (83) within 2-step MacAdam Ellipse. High CRI (98) within 1x2-step MacAdam Ellipse.

LISTINGS

ETL Certified to meet US and Canadian Standards.

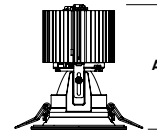
Manufactured and tested to UL standard No. 1598/8750. BAA compliant. Insulated Ceiling (IC) options available.

WARRANTY

Fixtures, LEDs and drivers carry 5 year Spectrum warranty, as well as individual OEM warranty. Warranty is 5 years from date of manufacturing. LED system rated for operation in an ambient temperatures up to 25 °C.

TRIM / MODULE DATA

RDD2F - DOWNLIGHT MODULE



Lm	A
XT10L	3.6
XT13L	3.6
XT20L	4.6



PHOTOMETRIC DATA - 2" ROUND DEEP

SR2DMO-XT20L-E1-RDD2F-xxK-MD-MW-NL

CANDLEPOWER CURVE	INTENSITY	ZONAL LUMENS	SINGLE UNIT: PERFORMANCE INITIAL FOOTCANDLES BASED ON IES BEAM ANGLE	MULTIPLE UNITS: PERFORMANCE 80/50/20% REFLECTANCES INITIAL FOOTCANDLES AND WATTS PER SQUARE FOOT																																									
	0.00°	0° - 10°	384	25%	<table border="1"> <thead> <tr> <th rowspan="2">Ceiling Height</th> <th rowspan="2">Fixture Spacing</th> <th colspan="2">RCR 3</th> <th colspan="2">RCR 5</th> </tr> <tr> <th>FC *</th> <th>W/Sq. Ft.</th> <th>FC *</th> <th>W/Sq. Ft.</th> </tr> </thead> <tbody> <tr> <td>8'</td> <td>3' *</td> <td>181</td> <td>2.79</td> <td>256</td> <td>4.35</td> </tr> <tr> <td>12'</td> <td>5' **</td> <td>61</td> <td>0.95</td> <td>56</td> <td>0.95</td> </tr> <tr> <td>16'</td> <td>7' ***</td> <td>38</td> <td>0.58</td> <td>24</td> <td>0.40</td> </tr> <tr> <td colspan="2">Delivered Illuminance Rating: (DIR)</td> <td colspan="2">65 FC per W/Sq. Ft.</td> <td colspan="2">59 FC per W/Sq. Ft.</td> </tr> <tr> <td colspan="6"> 2' Suspension Length Square rooms used for multiple units: - RCR 3: Length & Width = Ceiling Ht. - 4.5' x 3.33 - RCR 5: Length & Width = Ceiling Ht. - 4.5' x 2.00 * Average Footcandles at 2.5' Above Floor * Exceeds spacing criteria by 56% ** Exceeds spacing criteria by 21% *** Exceeds spacing criteria by 11% </td> </tr> </tbody> </table>	Ceiling Height	Fixture Spacing	RCR 3		RCR 5		FC *	W/Sq. Ft.	FC *	W/Sq. Ft.	8'	3' *	181	2.79	256	4.35	12'	5' **	61	0.95	56	0.95	16'	7' ***	38	0.58	24	0.40	Delivered Illuminance Rating: (DIR)		65 FC per W/Sq. Ft.		59 FC per W/Sq. Ft.		2' Suspension Length Square rooms used for multiple units: - RCR 3: Length & Width = Ceiling Ht. - 4.5' x 3.33 - RCR 5: Length & Width = Ceiling Ht. - 4.5' x 2.00 * Average Footcandles at 2.5' Above Floor * Exceeds spacing criteria by 56% ** Exceeds spacing criteria by 21% *** Exceeds spacing criteria by 11%					
	Ceiling Height	Fixture Spacing	RCR 3					RCR 5																																					
			FC *	W/Sq. Ft.		FC *	W/Sq. Ft.																																						
	8'	3' *	181	2.79		256	4.35																																						
	12'	5' **	61	0.95		56	0.95																																						
	16'	7' ***	38	0.58		24	0.40																																						
	Delivered Illuminance Rating: (DIR)		65 FC per W/Sq. Ft.			59 FC per W/Sq. Ft.																																							
	2' Suspension Length Square rooms used for multiple units: - RCR 3: Length & Width = Ceiling Ht. - 4.5' x 3.33 - RCR 5: Length & Width = Ceiling Ht. - 4.5' x 2.00 * Average Footcandles at 2.5' Above Floor * Exceeds spacing criteria by 56% ** Exceeds spacing criteria by 21% *** Exceeds spacing criteria by 11%																																												
	0.00° 4,462	0° - 20°	1,037	67%																																									
	5.00° 4,285	0° - 30°	1,380	89%																																									
	10.00° 3,601	0° - 40°	1,451	93%																																									
	15.00° 2,573	0° - 60°	1,522	98%																																									
	20.00° 1,565	0° - 80°	1,555	100%																																									
30.00° 344	0° - 90°	1,558	100%																																										
40.00° 53	Total	1,558	100%																																										
50.00° 45																																													
60.00° 34																																													
70.00° 16																																													
80.00° 5																																													
90.00° 1																																													
Delivered Lumens: 1,558 Luminaire Watts: 23.7 LER: 65.74	CP at 0deg (Nadir): 4,462 CRI: 83	Beam Angle: 31.31 Spacing Ratio: 0.55	Lamp Multiplier: 10L x 0.48, 13L x 0.65 CCT Multiplier: LEDXT lumen output is the same for all available CCT's																																										

SR2DMO-XT20L-E1-RDD2F-xxK-MD-MW-GL

CANDLEPOWER CURVE	INTENSITY	ZONAL LUMENS	SINGLE UNIT: PERFORMANCE INITIAL FOOTCANDLES BASED ON IES BEAM ANGLE	MULTIPLE UNITS: PERFORMANCE 80/50/20% REFLECTANCES INITIAL FOOTCANDLES AND WATTS PER SQUARE FOOT																																									
	0.00°	0° - 10°	352	25%	<table border="1"> <thead> <tr> <th rowspan="2">Ceiling Height</th> <th rowspan="2">Fixture Spacing</th> <th colspan="2">RCR 3</th> <th colspan="2">RCR 5</th> </tr> <tr> <th>FC *</th> <th>W/Sq. Ft.</th> <th>FC *</th> <th>W/Sq. Ft.</th> </tr> </thead> <tbody> <tr> <td>8'</td> <td>3' *</td> <td>165</td> <td>2.79</td> <td>234</td> <td>4.35</td> </tr> <tr> <td>12'</td> <td>5' **</td> <td>56</td> <td>0.95</td> <td>51</td> <td>0.95</td> </tr> <tr> <td>16'</td> <td>7' ***</td> <td>34</td> <td>0.58</td> <td>22</td> <td>0.40</td> </tr> <tr> <td colspan="2">Delivered Illuminance Rating: (DIR)</td> <td colspan="2">59 FC per W/Sq. Ft.</td> <td colspan="2">54 FC per W/Sq. Ft.</td> </tr> <tr> <td colspan="6"> 2' Suspension Length Square rooms used for multiple units: - RCR 3: Length & Width = Ceiling Ht. - 4.5' x 3.33 - RCR 5: Length & Width = Ceiling Ht. - 4.5' x 2.00 * Average Footcandles at 2.5' Above Floor * Exceeds spacing criteria by 62% ** Exceeds spacing criteria by 26% *** Exceeds spacing criteria by 15% </td> </tr> </tbody> </table>	Ceiling Height	Fixture Spacing	RCR 3		RCR 5		FC *	W/Sq. Ft.	FC *	W/Sq. Ft.	8'	3' *	165	2.79	234	4.35	12'	5' **	56	0.95	51	0.95	16'	7' ***	34	0.58	22	0.40	Delivered Illuminance Rating: (DIR)		59 FC per W/Sq. Ft.		54 FC per W/Sq. Ft.		2' Suspension Length Square rooms used for multiple units: - RCR 3: Length & Width = Ceiling Ht. - 4.5' x 3.33 - RCR 5: Length & Width = Ceiling Ht. - 4.5' x 2.00 * Average Footcandles at 2.5' Above Floor * Exceeds spacing criteria by 62% ** Exceeds spacing criteria by 26% *** Exceeds spacing criteria by 15%					
	Ceiling Height	Fixture Spacing	RCR 3					RCR 5																																					
			FC *	W/Sq. Ft.		FC *	W/Sq. Ft.																																						
	8'	3' *	165	2.79		234	4.35																																						
	12'	5' **	56	0.95		51	0.95																																						
	16'	7' ***	34	0.58		22	0.40																																						
	Delivered Illuminance Rating: (DIR)		59 FC per W/Sq. Ft.			54 FC per W/Sq. Ft.																																							
	2' Suspension Length Square rooms used for multiple units: - RCR 3: Length & Width = Ceiling Ht. - 4.5' x 3.33 - RCR 5: Length & Width = Ceiling Ht. - 4.5' x 2.00 * Average Footcandles at 2.5' Above Floor * Exceeds spacing criteria by 62% ** Exceeds spacing criteria by 26% *** Exceeds spacing criteria by 15%																																												
	0.00° 4,085	0° - 20°	951	67%																																									
	5.00° 3,872	0° - 30°	1,255	88%																																									
	10.00° 3,200	0° - 40°	1,320	93%																																									
	15.00° 2,219	0° - 60°	1,393	98%																																									
	20.00° 1,293	0° - 80°	1,423	100%																																									
30.00° 227	0° - 90°	1,425	100%																																										
40.00° 55	Total	1,426	100%																																										
50.00° 44																																													
60.00° 29																																													
70.00° 12																																													
80.00° 4																																													
90.00° 0																																													
Delivered Lumens: 1,426 Luminaire Watts: 23.7 LER: 60.17	CP at 0deg (Nadir): 4,085 CRI: 83	Beam Angle: 31.79 Spacing Ratio: 0.53	Lamp Multiplier: 10L x 0.48, 13L x 0.65 CCT Multiplier: LEDXT lumen output is the same for all available CCT's																																										

SR2DMO-XT20L-E1-RDD2F-xxK-MD-MW-SO

CANDLEPOWER CURVE	INTENSITY	ZONAL LUMENS	SINGLE UNIT: PERFORMANCE INITIAL FOOTCANDLES BASED ON IES BEAM ANGLE	MULTIPLE UNITS: PERFORMANCE 80/50/20% REFLECTANCES INITIAL FOOTCANDLES AND WATTS PER SQUARE FOOT																																									
	0.00°	0° - 10°	327	23%	<table border="1"> <thead> <tr> <th rowspan="2">Ceiling Height</th> <th rowspan="2">Fixture Spacing</th> <th colspan="2">RCR 3</th> <th colspan="2">RCR 5</th> </tr> <tr> <th>FC *</th> <th>W/Sq. Ft.</th> <th>FC *</th> <th>W/Sq. Ft.</th> </tr> </thead> <tbody> <tr> <td>8'</td> <td>3' *</td> <td>166</td> <td>2.79</td> <td>234</td> <td>4.35</td> </tr> <tr> <td>12'</td> <td>5' **</td> <td>57</td> <td>0.95</td> <td>51</td> <td>0.95</td> </tr> <tr> <td>16'</td> <td>7' ***</td> <td>35</td> <td>0.58</td> <td>22</td> <td>0.40</td> </tr> <tr> <td colspan="2">Delivered Illuminance Rating: (DIR)</td> <td colspan="2">59 FC per W/Sq. Ft.</td> <td colspan="2">54 FC per W/Sq. Ft.</td> </tr> <tr> <td colspan="6"> 2' Suspension Length Square rooms used for multiple units: - RCR 3: Length & Width = Ceiling Ht. - 4.5' x 3.33 - RCR 5: Length & Width = Ceiling Ht. - 4.5' x 2.00 * Average Footcandles at 2.5' Above Floor * Exceeds spacing criteria by 59% ** Exceeds spacing criteria by 23% *** Exceeds spacing criteria by 13% </td> </tr> </tbody> </table>	Ceiling Height	Fixture Spacing	RCR 3		RCR 5		FC *	W/Sq. Ft.	FC *	W/Sq. Ft.	8'	3' *	166	2.79	234	4.35	12'	5' **	57	0.95	51	0.95	16'	7' ***	35	0.58	22	0.40	Delivered Illuminance Rating: (DIR)		59 FC per W/Sq. Ft.		54 FC per W/Sq. Ft.		2' Suspension Length Square rooms used for multiple units: - RCR 3: Length & Width = Ceiling Ht. - 4.5' x 3.33 - RCR 5: Length & Width = Ceiling Ht. - 4.5' x 2.00 * Average Footcandles at 2.5' Above Floor * Exceeds spacing criteria by 59% ** Exceeds spacing criteria by 23% *** Exceeds spacing criteria by 13%					
	Ceiling Height	Fixture Spacing	RCR 3					RCR 5																																					
			FC *	W/Sq. Ft.		FC *	W/Sq. Ft.																																						
	8'	3' *	166	2.79		234	4.35																																						
	12'	5' **	57	0.95		51	0.95																																						
	16'	7' ***	35	0.58		22	0.40																																						
	Delivered Illuminance Rating: (DIR)		59 FC per W/Sq. Ft.			54 FC per W/Sq. Ft.																																							
	2' Suspension Length Square rooms used for multiple units: - RCR 3: Length & Width = Ceiling Ht. - 4.5' x 3.33 - RCR 5: Length & Width = Ceiling Ht. - 4.5' x 2.00 * Average Footcandles at 2.5' Above Floor * Exceeds spacing criteria by 59% ** Exceeds spacing criteria by 23% *** Exceeds spacing criteria by 13%																																												
	0.00° 3,828	0° - 20°	905	63%																																									
	5.00° 3,597	0° - 30°	1,233	85%																																									
	10.00° 2,970	0° - 40°	1,318	91%																																									
	15.00° 2,147	0° - 60°	1,407	97%																																									
	20.00° 1,361	0° - 80°	1,443	100%																																									
30.00° 323	0° - 90°	1,446	100%																																										
40.00° 74	Total	1,446	100%																																										
50.00° 54																																													
60.00° 39																																													
70.00° 16																																													
80.00° 4																																													
90.00° 1																																													
Delivered Lumens: 1,446 Luminaire Watts: 23.7 LER: 61.01	CP at 0deg (Nadir): 3,828 CRI: 83	Beam Angle: 32.75 Spacing Ratio: 0.54	Lamp Multiplier: 10L x 0.48, 13L x 0.65 CCT Multiplier: LEDXT lumen output is the same for all available CCT's																																										



PHOTOMETRIC DATA - 2" ROUND DEEP

SR2DMO-XT20L-E1-RDD2F-xxK-WD-MW-NL

CANDLEPOWER CURVE	INTENSITY	ZONAL LUMENS	SINGLE UNIT: PERFORMANCE INITIAL FOOTCANDLES BASED ON IES BEAM ANGLE	MULTIPLE UNITS: PERFORMANCE 80/50/20% REFLECTANCES INITIAL FOOTCANDLES AND WATTS PER SQUARE FOOT																																									
	0.00°	0° - 10°	249	16%	<table border="1"> <thead> <tr> <th rowspan="2">Ceiling Height</th> <th rowspan="2">Fixture Spacing</th> <th colspan="2">RCR 3</th> <th colspan="2">RCR 5</th> </tr> <tr> <th>FC +</th> <th>W/Sq. Ft.</th> <th>FC +</th> <th>W/Sq. Ft.</th> </tr> </thead> <tbody> <tr> <td>8'</td> <td>4' *</td> <td>98</td> <td>1.57</td> <td>107</td> <td>1.93</td> </tr> <tr> <td>12'</td> <td>6' **</td> <td>38</td> <td>0.61</td> <td>52</td> <td>0.95</td> </tr> <tr> <td>16'</td> <td>8' ***</td> <td>25</td> <td>0.40</td> <td>22</td> <td>0.40</td> </tr> <tr> <td colspan="2">Delivered Illuminance Rating: (DIR)</td> <td colspan="2">62 FC per W/Sq. Ft.</td> <td colspan="2">55 FC per W/Sq. Ft.</td> </tr> <tr> <td colspan="6"> 2' Suspension Length Square rooms used for multiple units: - RCR 3: Length & Width = Ceiling Ht. - 4.5' x 3.33 - RCR 5: Length & Width = Ceiling Ht. - 4.5' x 2.00 * Average Footcandles at 2.5' Above Floor * Exceeds spacing criteria by 84% ** Exceeds spacing criteria by 29% *** Exceeds spacing criteria by 12% </td> </tr> </tbody> </table>	Ceiling Height	Fixture Spacing	RCR 3		RCR 5		FC +	W/Sq. Ft.	FC +	W/Sq. Ft.	8'	4' *	98	1.57	107	1.93	12'	6' **	38	0.61	52	0.95	16'	8' ***	25	0.40	22	0.40	Delivered Illuminance Rating: (DIR)		62 FC per W/Sq. Ft.		55 FC per W/Sq. Ft.		2' Suspension Length Square rooms used for multiple units: - RCR 3: Length & Width = Ceiling Ht. - 4.5' x 3.33 - RCR 5: Length & Width = Ceiling Ht. - 4.5' x 2.00 * Average Footcandles at 2.5' Above Floor * Exceeds spacing criteria by 84% ** Exceeds spacing criteria by 29% *** Exceeds spacing criteria by 12%					
	Ceiling Height	Fixture Spacing	RCR 3					RCR 5																																					
			FC +	W/Sq. Ft.		FC +	W/Sq. Ft.																																						
	8'	4' *	98	1.57		107	1.93																																						
	12'	6' **	38	0.61		52	0.95																																						
	16'	8' ***	25	0.40		22	0.40																																						
	Delivered Illuminance Rating: (DIR)		62 FC per W/Sq. Ft.			55 FC per W/Sq. Ft.																																							
	2' Suspension Length Square rooms used for multiple units: - RCR 3: Length & Width = Ceiling Ht. - 4.5' x 3.33 - RCR 5: Length & Width = Ceiling Ht. - 4.5' x 2.00 * Average Footcandles at 2.5' Above Floor * Exceeds spacing criteria by 84% ** Exceeds spacing criteria by 29% *** Exceeds spacing criteria by 12%																																												
	0.00°	0° - 10°	249	16%																																									
	5.00°	0° - 20°	762	49%																																									
	10.00°	0° - 30°	1,204	78%																																									
15.00°	0° - 40°	1,395	90%																																										
20.00°	0° - 60°	1,499	97%																																										
30.00°	0° - 80°	1,548	100%																																										
40.00°	0° - 90°	1,552	100%																																										
50.00°	Total	1,552	100%																																										
60.00°																																													
70.00°																																													
80.00°																																													
90.00°																																													
Delivered Lumens: 1,552 Luminaire Watts: 23.7 LER: 65.49	CP at 0deg (Nadir): 2,889 CRI: 83	Beam Angle: 39.39 Spacing Ratio: 0.62	Lamp Multiplier: 10L x 0.48, 13L x 0.65 CCT Multiplier: LEDXT lumen output is the same for all available CCT's																																										

SR2DMO-XT20L-E1-RDD2F-xxK-WD-MW-GL

CANDLEPOWER CURVE	INTENSITY	ZONAL LUMENS	SINGLE UNIT: PERFORMANCE INITIAL FOOTCANDLES BASED ON IES BEAM ANGLE	MULTIPLE UNITS: PERFORMANCE 80/50/20% REFLECTANCES INITIAL FOOTCANDLES AND WATTS PER SQUARE FOOT																																									
	0.00°	0° - 10°	225	16%	<table border="1"> <thead> <tr> <th rowspan="2">Ceiling Height</th> <th rowspan="2">Fixture Spacing</th> <th colspan="2">RCR 3</th> <th colspan="2">RCR 5</th> </tr> <tr> <th>FC +</th> <th>W/Sq. Ft.</th> <th>FC +</th> <th>W/Sq. Ft.</th> </tr> </thead> <tbody> <tr> <td>8'</td> <td>4' *</td> <td>89</td> <td>1.57</td> <td>97</td> <td>1.93</td> </tr> <tr> <td>12'</td> <td>6' **</td> <td>34</td> <td>0.61</td> <td>47</td> <td>0.95</td> </tr> <tr> <td>16'</td> <td>8' ***</td> <td>23</td> <td>0.40</td> <td>20</td> <td>0.40</td> </tr> <tr> <td colspan="2">Delivered Illuminance Rating: (DIR)</td> <td colspan="2">56 FC per W/Sq. Ft.</td> <td colspan="2">50 FC per W/Sq. Ft.</td> </tr> <tr> <td colspan="6"> 2' Suspension Length Square rooms used for multiple units: - RCR 3: Length & Width = Ceiling Ht. - 4.5' x 3.33 - RCR 5: Length & Width = Ceiling Ht. - 4.5' x 2.00 * Average Footcandles at 2.5' Above Floor * Exceeds spacing criteria by 84% ** Exceeds spacing criteria by 29% *** Exceeds spacing criteria by 12% </td> </tr> </tbody> </table>	Ceiling Height	Fixture Spacing	RCR 3		RCR 5		FC +	W/Sq. Ft.	FC +	W/Sq. Ft.	8'	4' *	89	1.57	97	1.93	12'	6' **	34	0.61	47	0.95	16'	8' ***	23	0.40	20	0.40	Delivered Illuminance Rating: (DIR)		56 FC per W/Sq. Ft.		50 FC per W/Sq. Ft.		2' Suspension Length Square rooms used for multiple units: - RCR 3: Length & Width = Ceiling Ht. - 4.5' x 3.33 - RCR 5: Length & Width = Ceiling Ht. - 4.5' x 2.00 * Average Footcandles at 2.5' Above Floor * Exceeds spacing criteria by 84% ** Exceeds spacing criteria by 29% *** Exceeds spacing criteria by 12%					
	Ceiling Height	Fixture Spacing	RCR 3					RCR 5																																					
			FC +	W/Sq. Ft.		FC +	W/Sq. Ft.																																						
	8'	4' *	89	1.57		97	1.93																																						
	12'	6' **	34	0.61		47	0.95																																						
	16'	8' ***	23	0.40		20	0.40																																						
	Delivered Illuminance Rating: (DIR)		56 FC per W/Sq. Ft.			50 FC per W/Sq. Ft.																																							
	2' Suspension Length Square rooms used for multiple units: - RCR 3: Length & Width = Ceiling Ht. - 4.5' x 3.33 - RCR 5: Length & Width = Ceiling Ht. - 4.5' x 2.00 * Average Footcandles at 2.5' Above Floor * Exceeds spacing criteria by 84% ** Exceeds spacing criteria by 29% *** Exceeds spacing criteria by 12%																																												
	0.00°	0° - 10°	225	16%																																									
	5.00°	0° - 20°	689	49%																																									
	10.00°	0° - 30°	1,080	77%																																									
15.00°	0° - 40°	1,249	89%																																										
20.00°	0° - 60°	1,358	96%																																										
30.00°	0° - 80°	1,404	100%																																										
40.00°	0° - 90°	1,408	100%																																										
50.00°	Total	1,408	100%																																										
60.00°																																													
70.00°																																													
80.00°																																													
90.00°																																													
Delivered Lumens: 1,408 Luminaire Watts: 23.7 LER: 59.41	CP at 0deg (Nadir): 2,606 CRI: 83	Beam Angle: 39.33 Spacing Ratio: 0.62	Lamp Multiplier: 10L x 0.48, 13L x 0.65 CCT Multiplier: LEDXT lumen output is the same for all available CCT's																																										

SR2DMO-XT20L-E1-RDD2F-xxK-WD-MW-SO

CANDLEPOWER CURVE	INTENSITY	ZONAL LUMENS	SINGLE UNIT: PERFORMANCE INITIAL FOOTCANDLES BASED ON IES BEAM ANGLE	MULTIPLE UNITS: PERFORMANCE 80/50/20% REFLECTANCES INITIAL FOOTCANDLES AND WATTS PER SQUARE FOOT																																									
	0.00°	0° - 10°	217	15%	<table border="1"> <thead> <tr> <th rowspan="2">Ceiling Height</th> <th rowspan="2">Fixture Spacing</th> <th colspan="2">RCR 3</th> <th colspan="2">RCR 5</th> </tr> <tr> <th>FC +</th> <th>W/Sq. Ft.</th> <th>FC +</th> <th>W/Sq. Ft.</th> </tr> </thead> <tbody> <tr> <td>8'</td> <td>4' *</td> <td>89</td> <td>1.57</td> <td>97</td> <td>1.93</td> </tr> <tr> <td>12'</td> <td>6' **</td> <td>35</td> <td>0.61</td> <td>48</td> <td>0.95</td> </tr> <tr> <td>16'</td> <td>8' ***</td> <td>23</td> <td>0.40</td> <td>20</td> <td>0.40</td> </tr> <tr> <td colspan="2">Delivered Illuminance Rating: (DIR)</td> <td colspan="2">57 FC per W/Sq. Ft.</td> <td colspan="2">50 FC per W/Sq. Ft.</td> </tr> <tr> <td colspan="6"> 2' Suspension Length Square rooms used for multiple units: - RCR 3: Length & Width = Ceiling Ht. - 4.5' x 3.33 - RCR 5: Length & Width = Ceiling Ht. - 4.5' x 2.00 * Average Footcandles at 2.5' Above Floor * Exceeds spacing criteria by 79% ** Exceeds spacing criteria by 25% *** Exceeds spacing criteria by 9% </td> </tr> </tbody> </table>	Ceiling Height	Fixture Spacing	RCR 3		RCR 5		FC +	W/Sq. Ft.	FC +	W/Sq. Ft.	8'	4' *	89	1.57	97	1.93	12'	6' **	35	0.61	48	0.95	16'	8' ***	23	0.40	20	0.40	Delivered Illuminance Rating: (DIR)		57 FC per W/Sq. Ft.		50 FC per W/Sq. Ft.		2' Suspension Length Square rooms used for multiple units: - RCR 3: Length & Width = Ceiling Ht. - 4.5' x 3.33 - RCR 5: Length & Width = Ceiling Ht. - 4.5' x 2.00 * Average Footcandles at 2.5' Above Floor * Exceeds spacing criteria by 79% ** Exceeds spacing criteria by 25% *** Exceeds spacing criteria by 9%					
	Ceiling Height	Fixture Spacing	RCR 3					RCR 5																																					
			FC +	W/Sq. Ft.		FC +	W/Sq. Ft.																																						
	8'	4' *	89	1.57		97	1.93																																						
	12'	6' **	35	0.61		48	0.95																																						
	16'	8' ***	23	0.40		20	0.40																																						
	Delivered Illuminance Rating: (DIR)		57 FC per W/Sq. Ft.			50 FC per W/Sq. Ft.																																							
	2' Suspension Length Square rooms used for multiple units: - RCR 3: Length & Width = Ceiling Ht. - 4.5' x 3.33 - RCR 5: Length & Width = Ceiling Ht. - 4.5' x 2.00 * Average Footcandles at 2.5' Above Floor * Exceeds spacing criteria by 79% ** Exceeds spacing criteria by 25% *** Exceeds spacing criteria by 9%																																												
	0.00°	0° - 10°	217	15%																																									
	5.00°	0° - 20°	674	47%																																									
	10.00°	0° - 30°	1,064	74%																																									
15.00°	0° - 40°	1,243	87%																																										
20.00°	0° - 60°	1,371	96%																																										
30.00°	0° - 80°	1,425	100%																																										
40.00°	0° - 90°	1,429	100%																																										
50.00°	Total	1,429	100%																																										
60.00°																																													
70.00°																																													
80.00°																																													
90.00°																																													
Delivered Lumens: 1,429 Luminaire Watts: 23.7 LER: 60.30	CP at 0deg (Nadir): 2,454 CRI: 83	Beam Angle: 40.69 Spacing Ratio: 0.64	Lamp Multiplier: 10L x 0.48, 13L x 0.65 CCT Multiplier: LEDXT lumen output is the same for all available CCT's																																										

