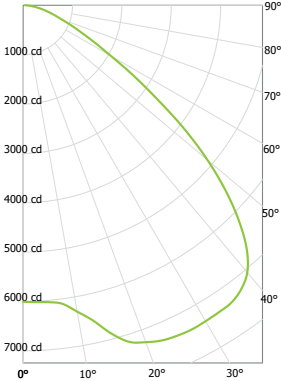


DMD22GY 220L 35K xx AL22 MWI BC22 CN xx

CANDLEPOWER CURVE  
TEST SP-01567\_1



Delivered Lumens: 20295  
Luminaire Watts: 171  
LER: 118.68

INTENSITY  
CANDELA  
0° AZIMUTH

0°
0° 6007
5° 6038
15° 6881
25° 7386
35° 7354
45° 6186
55° 3313
90° 41

ZONAL LUMENS

0° - 10°	590	3%
0° - 20°	2519	12%
0° - 30°	5907	29%
0° - 40°	10472	52%
0° - 60°	18102	89%
0° - 80°	20072	99%
0° - 90°	20258	100%
Total	20295	100%

SINGLE UNIT: PERFORMANCE  
HORIZONTAL FOOTCANDLES  
INITIAL DOWNLIGHT ONLY

Mounting Distance	FC at Beam Center	Diameter at Beam Angle	FC at Beam Edge
10'	60 fc	27.0'	6 fc
12'	42 fc	32.4'	4 fc
14'	31 fc	37.8'	3 fc
16'	23 fc	43.2'	2 fc
20'	15 fc	53.9'	2 fc
24'	10 fc	64.7'	1 fc
28'	8 fc	75.5'	1 fc
32'	6 fc	86.3'	1 fc

MULTIPLE UNITS: PERFORMANCE  
80/50/20% REFLECTANCES  
HORIZONTAL FOOTCANDLES AND WATTS/SQ FT

Ceiling Height	Fixture Spacing	RCR 2		RCR 4	
		FC +	W/Sq. Ft.	FC +	W/Sq. Ft.
22'	14'	77	0.71	39	0.46
26'	18'	49	0.45	25	0.29
32'	22'	29	0.26	15	0.17
Delivered Illuminance Rating: (DIR)		109 FC per W/Sq. Ft.		86 FC per W/Sq. Ft.	
4' Suspension Length to luminous aperture Square rooms used for multiple units: RCR 2: Length & Width = Ceiling Ht. - 6.5' x 5.00 RCR 4: Length & Width = Ceiling Ht. - 6.5' x 2.50 + Average Initial Footcandles at 2.5' Above Floor					

CP at 0° (Nadir): 6007

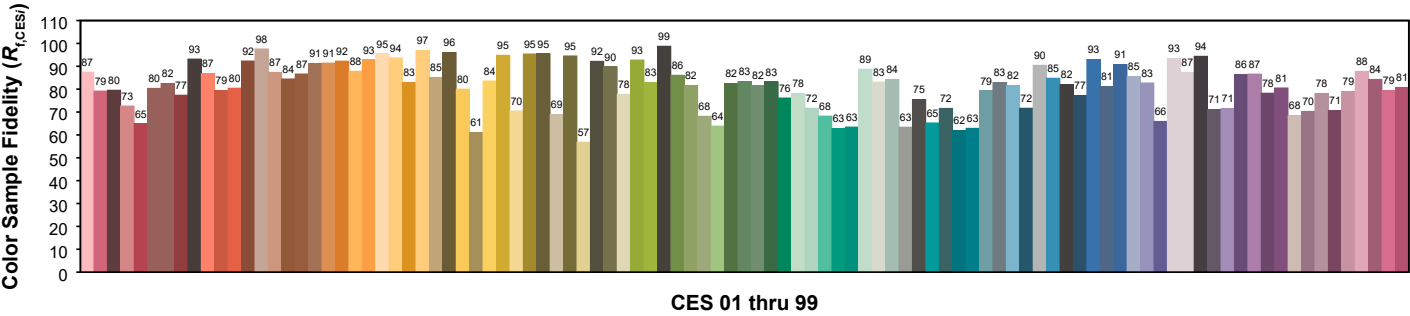
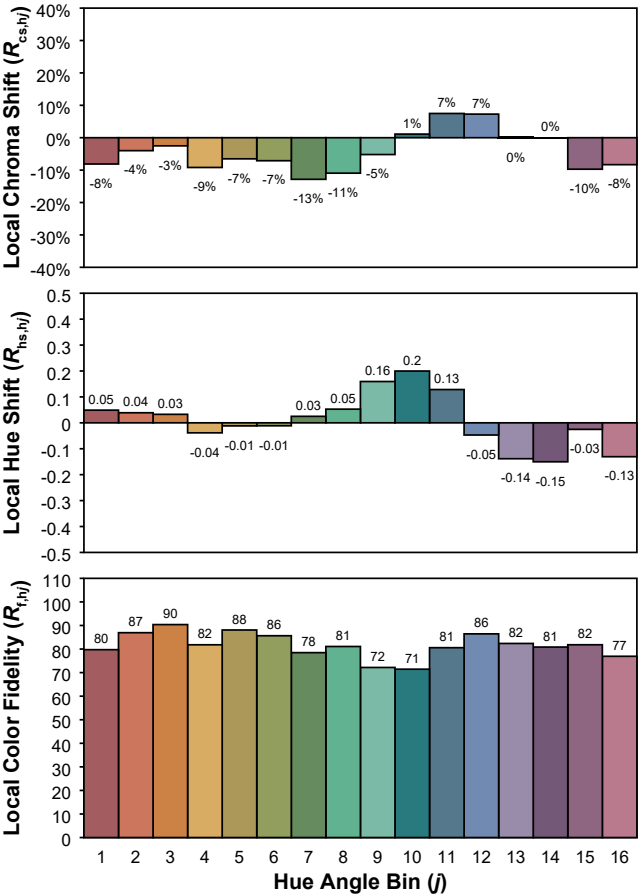
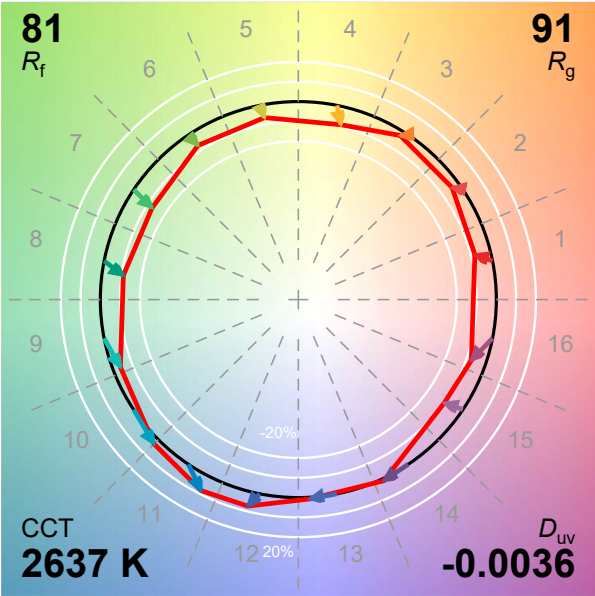
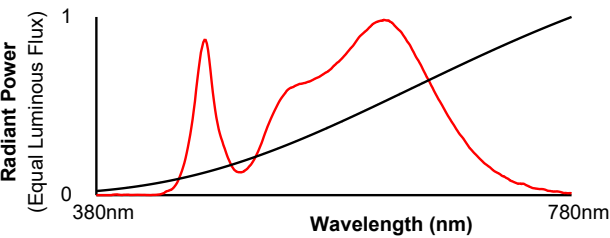
Beam Angle: 107°  
Spacing Ratio: 1.72  
Melanopic Ratio 0.55

Lumen Multiplier: 160L x 0.73, 200L x 0.91  
CCT Multiplier: 40K x 1.01

IES TM-30-18 Color Rendition Report

Manufacturer: Spectrum Lighting

Model: SP-01567\_1 ~ DMD22GY 220L 35K xx AL22 MWI BC22 CN xx



Luminous Flux:	17760 lm
Radiant Flux:	59 Wrad
Electrical Power:	171 W
Efficacy:	104 lm/W
Melanopic Flux:	9775 mel lm
Melanopic Ratio:	0.55
CCT:	2637K
xy Coordinates:	0.452, 0.399
u'v' Coordinates:	0.263, 0.522
Delta u'v':	-0.0036

CIE u'v' (1976)

