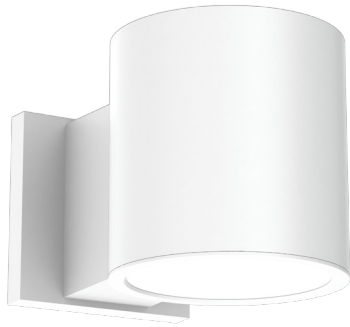




**6" ROUND DIRECT
DAMP LOCATION
GAMMA SERIES**

PROJECT: _____
 QUANTITY: _____ TYPE: _____



CF0606PC



CF0612PC



CF0618PC

SERIES	LUMENS ¹	CCT	OPTICS	DRIVER / DIMMING ²	LENS	MOUNTING ³	FINISH ⁴
CF0606PC 6" x 6"	10L 750 Lm	80 CRI	ND 13° MD 30° WD 53° XW 78°	EX Electronic Driver, 120V/277V DO10X 1%, 0-10V, 120V/277V DS2W1 ELV/MLV, 120V	NL No Lens CL Clear Glass Lens SO Micro Prism Solite™ Lens HL Hex Louver	WM Wall Mount	MW ⁵ Matte White MB ⁵ Matte Black PT ⁵ Platinum Silver CC Custom Color
	15L 1150 Lm	27K 2700K					
CF0612PC 6" x 12"	20L 1550 Lm	30K 3000K					
	30L 2300 Lm	35K 3500K					
CF0618PC 6" x 18"	40L 3100 Lm	40K 4000K					
		90 CRI				EMERGENCY BATTERY OPTIONS	See Page 4 for Full Range of Color Options (83-90095)
	27HK 2700K 30HK 3000K				EMRM 7W Remote EM EMEN 7W Remote with Enclosure		

EXAMPLE: CF0606PC15L35KNDEX/NL/WM/MW

NOTES:
 1 Nominal Delivered Lumens at 3500K 2 Consult Factory for Additional Options 3 See Mounting Page for Details on Components and Finishes
 4 See Color Page for More Options/Consult Factory for Special Finishes 5 Standard Finishes



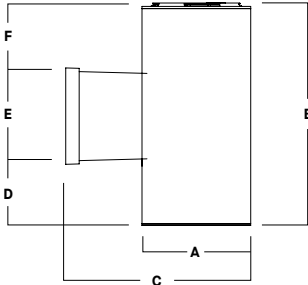


6" ROUND DIRECT DAMP LOCATION GAMMA SERIES

LUMENS / WATTAGE DATA			
PART NUMBER	DELIVERED LUMENS ¹	SYSTEM WATTS	LPW
CF0612PC 10L	732	6.5	113
CF0612PC 15L	1083	9.5	114
CF0612PC 20L	1463	12.9	113
CF0612PC 30L	2195	19.9	110
CF0612PC 40L	2926	27.4	107

¹ Nominal Delivered Lumens at 3500K, 80 CRI, Medium Optic with Clear Lens

DIMENSIONS



Dimensioned with **CF0612PC**

SERIES	A	B	C	D	E	F
CF0606PC	6.1	6.4	10.3	0.4	5.4	0.6
CF0612PC	6.1	12.4	10.3	3.4	5.4	3.6
CF0618PC	6.1	18.4	10.3	6.4	5.4	6.6

APPLICATION

The Gamma Family of Cylinders are a robust offering of point source LED luminaires featuring high efficacies, an assortment of optical control, and installation flexibility, which make them suitable for a wide range of commercial and institutional applications.

ELECTRONICS

Solid-state light engine available in various color temperatures and lumen outputs. Specifiable in 2700K, 3000K, 3500K, 4000K in CRI 80 (Typ.), or 2700K, 3000K in CRI 90 (Typ.), color accuracy ≤ 3 SDCM. Selection of integral electronic constant current, dimmable drivers available, power factor > 0.9 (Typ). Driver and light engine are field serviceable for future replacement or upgrades. Emergency battery options provide 7W for 90 minutes.

CONSTRUCTION

Seamless cylinder body machined from 6063 extruded aluminum. Trim and top cap are die-cast aluminum. Twist and lock trim design for no visible fasteners. Passive aluminum heatsink optimized for LED life and performance. Specular reflectors offered in variety of beam spreads. Lens accessory options available (maximum of 2).

MOUNTING

Mounting bracket for direct installation with 4" octagonal junction boxes. Single-piece, seamless die-cast aluminum wall arm. See mounting page for additional information. Contact factory for special installation circumstances.

FINISH

Multi-stage polyester powder-coat process applied on our in-house finishing department. Custom colors also available (contact factory with RAL#). Wall arm will match cylinder finish specification.

CODE COMPLIANCE

ETL Listed. Suitable for dry or damp locations with operation in ambient conditions up to 25°C. 5 year limited warranty on all components. Proudly designed and manufactured in Massachusetts, USA.

SERIES SIZES

CF0606PC



CF0612PC



CF0618PC



STANDARD FINISHES SHOWN WITH CF0612PC

MW
Matte White



MB
Matte Black

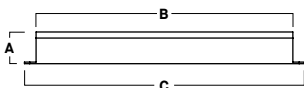


PT
Platinum Silver



EMERGENCY BATTERY OPTIONS

EMRM* - 7W REMOTE EMERGENCY BATTERY
(50' MAX)



A	B	C
1.3	12.6	13.0

EMEN* - 7W REMOTE EMERGENCY BATTERY
WITH ENCLOSURE (50' MAX)



A	B	C
2.0	17.0	6.2

*OTHER EM BATTERY SIZES AVAILABLE, CONSULT FACTORY





6" ROUND DIRECT

GAMMA SERIES / PHOTOMETRIC DATA

CF06XXPC 40L 35K ND XX CL XX

CANDLEPOWER CURVE TEST SP-01041	INTENSITY CANDELA 0° AZIMUTH	ZONAL LUMENS	SINGLE UNIT: PERFORMANCE DIRECT FOOTCANDLES BASED ON DOWNLIGHT ONLY				MULTIPLE UNITS: PERFORMANCE 80/50/20% REFLECTANCES INITIAL FOOTCANDLES AND WATTS PER SQUARE FOOT					
			Mounting Height AFF	FC at Center on Floor	Beam Diameter	FC at Beam Edge	Ceiling Height	Fixture Spacing	RCR 4		RCR 6	
	0°	0° - 10° 866 29%	8'	263 fc	1.9'	129 fc	22'	4'	169	1.73	139	1.59
	0°	0° - 20° 16841	10'	168 fc	2.4'	82 fc	26'	5''*	112	1.15	92	1.05
	5°	0° - 30° 11572	12'	117 fc	2.8'	57 fc	30'	6''**	79	0.82	66	0.75
	15°	0° - 40° 1784	14'	86 fc	3.3'	42 fc	Delivered Illuminance Rating: (DIR) 97 FC per W/Sq. Ft. 87 FC per W/Sq. Ft.					
	25°	0° - 60° 1162	16'	66 fc	3.8'	32 fc	2' Suspension Length to luminous aperture Square rooms used for multiple units: RCR 4: Length & Width = Ceiling Ht. - 4.5' x 2.50 RCR 6: Length & Width = Ceiling Ht. - 4.5' x 1.66					
	35°	0° - 80° 997	20'	42 fc	4.7'	21 fc	* Average Footcandles at 2.5' Above Floor					
	45°	0° - 90° 330	24'	29 fc	5.7'	14 fc	** Exceeds Spacing Ratio by 1%					
	55°	0° - 90° 5	28'	21 fc	6.6'	11 fc	*** Exceeds Spacing Ratio by 2%					
	90°	0° 0	Total 2941 100%									

Delivered Lumens: 2941 CP at 0° (Nadir): 16841 Beam Angle: 13° Lumen Multiplier: 10L x 0.25, 15L x 0.37, 20L x 0.50, 30L x 0.75
 Luminaire Watts: 27.4 LER: 107.34 Spacing Ratio: 0.23 CCT Multiplier: 27K x 0.97, 30K x 0.98, 40K x 1.04
 27HK x 0.78, 30HK x 0.82 See Page 1 for System Watts for all outputs

CF06XXPC 40L 35K MD XX CL XX

CANDLEPOWER CURVE TEST SP-01038	INTENSITY CANDELA 0° AZIMUTH	ZONAL LUMENS	SINGLE UNIT: PERFORMANCE DIRECT FOOTCANDLES BASED ON DOWNLIGHT ONLY				MULTIPLE UNITS: PERFORMANCE 80/50/20% REFLECTANCES INITIAL FOOTCANDLES AND WATTS PER SQUARE FOOT					
			Mounting Height AFF	FC at Center on Floor	Beam Diameter	FC at Beam Edge	Ceiling Height	Fixture Spacing	RCR 3		RCR 5	
	0°	0° - 10° 478 16%	8'	89 fc	4.4'	40 fc	18'	6'	67	0.66	53	0.60
	0°	0° - 20° 5685	10'	57 fc	5.5'	26 fc	22'	8'	40	0.40	32	0.36
	5°	0° - 30° 5293	12'	39 fc	6.6'	18 fc	26'	10'	26	0.26	21	0.24
	15°	0° - 40° 2892	14'	29 fc	7.7'	13 fc	Delivered Illuminance Rating: (DIR) 101 FC per W/Sq. Ft. 89 FC per W/Sq. Ft.					
	25°	0° - 60° 1335	16'	22 fc	8.8'	10 fc	2' Suspension Length to luminous aperture Square rooms used for multiple units: RCR 3: Length & Width = Ceiling Ht. - 4.5' x 3.33 RCR 5: Length & Width = Ceiling Ht. - 4.5' x 2.00					
	35°	0° - 80° 1019	20'	14 fc	11.0'	6 fc	* Average Footcandles at 2.5' Above Floor					
	45°	0° - 90° 297	24'	10 fc	13.2'	4 fc						
	55°	0° - 90° 10	28'	7 fc	15.3'	3 fc						
	90°	0° 0	Total 2926 100%									

Delivered Lumens: 2926 Beam Angle: 30° Lumen Multiplier: 10L x 0.25, 15L x 0.37, 20L x 0.50, 30L x 0.75
 Luminaire Watts: 27.4 Spacing Ratio: 0.50 CCT Multiplier: 27K x 0.97, 30K x 0.98, 40K x 1.04, 27HK x 0.78, 30HK x 0.82
 LER: 106.79 CRI: 80 See Page 1 for System Watts for all outputs

CF06XXPC 40L 35K WD XX CL XX

CANDLEPOWER CURVE TEST SP-01287_M-40L	INTENSITY CANDELA 0° AZIMUTH	ZONAL LUMENS	SINGLE UNIT: PERFORMANCE DIRECT FOOTCANDLES BASED ON DOWNLIGHT ONLY				MULTIPLE UNITS: PERFORMANCE 80/50/20% REFLECTANCES INITIAL FOOTCANDLES AND WATTS PER SQUARE FOOT					
			Mounting Height AFF	FC at Center on Floor	Beam Diameter	FC at Beam Edge	Ceiling Height	Fixture Spacing	RCR 2		RCR 4	
	0°	0° - 10° 316 11%	8'	54 fc	7.9'	20 fc	14'	6'	83	0.77	72	0.77
	0°	0° - 20° 3445	10'	34 fc	9.9'	13 fc	18'	8'	41	0.38	36	0.38
	5°	0° - 30° 3326	12'	24 fc	11.9'	9 fc	22'	10'	31	0.29	21	0.23
	15°	0° - 40° 2624	14'	18 fc	13.9'	7 fc	Delivered Illuminance Rating: (DIR) 108 FC per W/Sq. Ft. 94 FC per W/Sq. Ft.					
	25°	0° - 60° 1732	16'	13 fc	15.8'	5 fc	2' Suspension Length to luminous aperture Square rooms used for multiple units: RCR 2: Length & Width = Ceiling Ht. - 4.5' x 5.00 RCR 4: Length & Width = Ceiling Ht. - 4.5' x 2.50					
	35°	0° - 80° 1039	20'	9 fc	19.8'	3 fc	* Average Footcandles at 2.5' Above Floor					
	45°	0° - 90° 225	24'	6 fc	23.8'	2 fc						
	55°	0° - 90° 21	28'	4 fc	27.7'	2 fc						
	90°	0° 2	Total 2913 100%									

Delivered Lumens: 2913 CP at 0° (Nadir): 3445 Beam Angle: 53° Lumen Multiplier: 10L x 0.25, 15L x 0.36, 20L x 0.50, 30L x 0.75
 Luminaire Watts: 27 Spacing Ratio: 0.76 CCT Multiplier: 27K x 0.97, 30K x 0.98, 40K x 1.04
 LER: 107.89 CRI: 80 27HK x 0.78, 30HK x 0.83 See Page 1 for System Watts for all outputs





6" ROUND DIRECT

GAMMA SERIES / PHOTOMETRIC DATA

CF06XXPC 40L 35K XW XX CL XX

CANDLEPOWER CURVE TEST SP-01044	INTENSITY CANDELA 0° AZIMUTH	ZONAL LUMENS		SINGLE UNIT: PERFORMANCE DIRECT FOOTCANDLES BASED ON DOWNLIGHT ONLY			MULTIPLE UNITS: PERFORMANCE 80/50/20% REFLECTANCES INITIAL FOOTCANDLES AND WATTS PER SQUARE FOOT								
		0° - 10°	206	7%	Mounting Height AFF	FC at Center on Floor	Beam Diameter	FC at Beam Edge	Ceiling Height	Fixture Spacing	RCR 1		RCR 3		
	0°	2153	0° - 20°	785	27%	6'	60 fc	9.7'	14 fc	14'	8'	50	0.44	42	0.44
	5°	2124	0° - 30°	1642	57%	8'	34 fc	12.9'	8 fc	18'	10'	29	0.25	21	0.22
	15°	2030	0° - 40°	2490	86%	10'	22 fc	16.1'	5 fc	22'	12'	20	0.18	20	0.20
	25°	1863	0° - 60°	2856	98%	12'	15 fc	19.3'	4 fc	Delivered Illuminance Rating: (DIR)		113 FC per W/Sq. Ft.		97 FC per W/Sq. Ft.	
	35°	1406	0° - 80°	2904	100%	14'	11 fc	22.5'	3 fc	2' Suspension Length to luminous aperture Square rooms used for multiple units: RCR 1: Length & Width = Ceiling Ht. - 4.5' x 10.00 RCR 3: Length & Width = Ceiling Ht. - 4.5' x 3.33 * Average Footcandles at 2.5' Above Floor					
	45°	401	0° - 90°	2906	100%	16'	8 fc	25.7'	2 fc						
	55°	26	Total	2907	100%	20'	5 fc	32.2'	1 fc						
	90°	0				24'	4 fc	38.6'	1 fc						

Delivered Lumens: **2907**
Luminaire Watts: **27.4**
LER: **106.09**

CP at 0° (Nadir): **2153**
CRI: **80**

Beam Angle: **78°**
Spacing Ratio: **1.17**

Lumen Multiplier: 10L x 0.25, 15L x 0.37, 20L x 0.50, 30L x 0.75
CCT Multiplier: 27K x 0.97, 30K x 0.98, 40K x 1.04
27HK x 0.78, 30HK x 0.82

See Page 1 for System Watts for all outputs



COLOR OPTIONS - POWDER COAT PAINT FINISHES

NOTE: NO PRINTED IMAGE CAN EQUAL THE EXACT COLOR OF FINISH ON METAL.
SEE INDIVIDUAL SPECIFICATION SHEETS OR CONSULT FACTORY FOR ADDITIONAL INFORMATION.



STANDARD CORD / STEM / CANOPY FINISHES

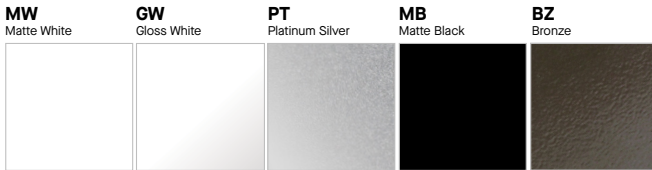
FIXTURE COLOR	STANDARD CORD COLOR	STANDARD CANOPY / STEM COLOR
Matte White, Textured White	Matte White	Matte White
Gloss White	Matte White	Gloss White
Matte Black, Textured Black	Matte Black	Matte Black
All Others	Matte Black	Same Color as Fixture
Custom Color	Contact Factory	Contact Factory

PAINT TIMES

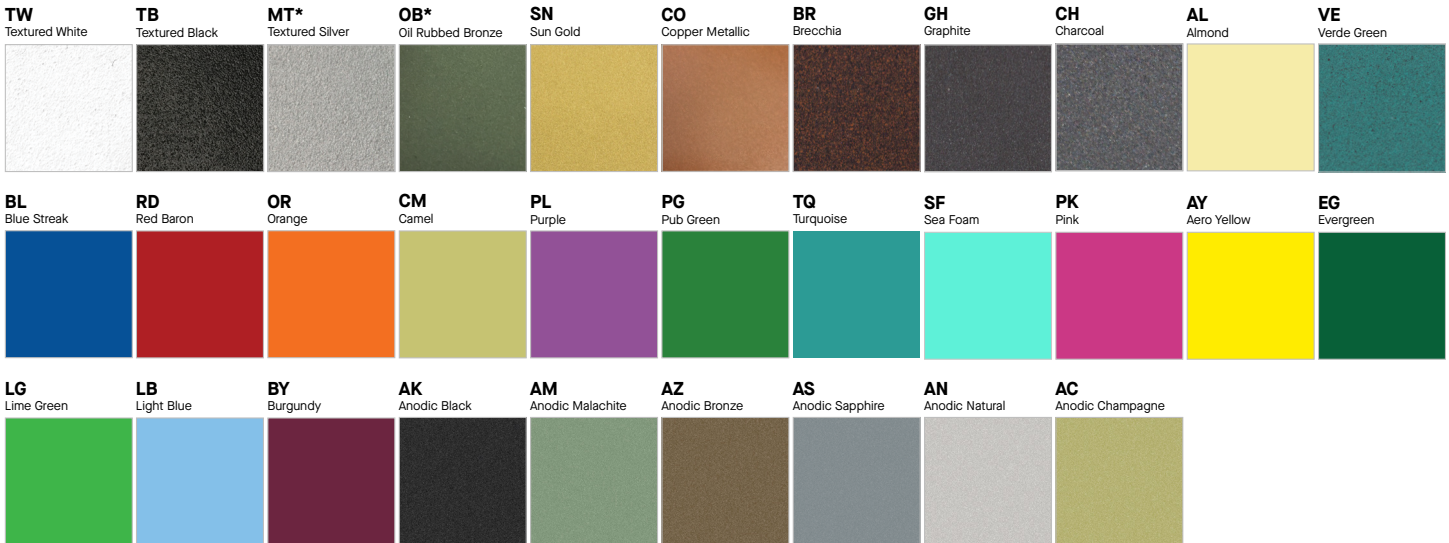
TIER	COST	AVERAGE PAINT TIME*
Tier 1 - Standard Finishes	\$	⓪
Tier 2 - Typical Finishes	\$\$	⓪⓪
Custom Color	Contact Factory	Contact Factory

*CONTACT FACTORY FOR SPECIFIC PRODUCT LEAD TIMES

TIER 1 - STANDARD FINISHES



TIER 2 - TYPICAL FINISHES



CUSTOM COLOR FINISHES

CONTACT FACTORY

CC
Custom Color



*UNAVAILABLE FOR WET LOCATION

