

TRACK SERIES

Adaptor must match track-use this chart to select adaptor.
adaptor will be wired to track head.

	2 CIRCUIT			3 CIRCUIT
	1 NEUTRAL	2 NEUTRAL		1 NEUTRAL
SERIES NUMBER	GET	TEK	HTEK	XTS
Voltage	120	120	277	120
REQUIRED ADAPTOR	GES66	TEK100	HTEK100	GA100

	2 CIRCUIT			3 CIRCUIT
	1 NEUTRAL	2 NEUTRAL		1 NEUTRAL
SERIES NUMBER	GET	TEK	HTEK	XTS
Voltage	120	120	277	120
TRACK LENGTHS	SPECIFY FINISH: Natural Aluminum (-1) Available for track lengths only; Black (-2); White (-3)			
4' Length	GET304	TEK44 / *FTP44	HTEK44 / *FTP44	XTS44 / *FTP44
8' Length	GET308	TEK48 / *FTP48	HTEK48 / *FTP48	XTS48 / *FTP48
12' Length	GET312	TEK412 / *FTP412	HTEK412 / *FTP412	XTS412 / *FTP412
ACCESSORIES	SPECIFY FINISH: Black (-2); White (-3) *FTP (Recessed Track Jacket-Order Separately if Required)			
Live End	GET11	TEK11	HTEK11	XTS11
End Cap	GET41	TEK41	HTEK41	XTS41
Linear Coupler	GET21	TEK21	HTEK21	XTS21
Conduit End Feed	GET13	N/A	N/A	N/A
Live Middle Feed	GET14	TEK14	HTEK14	XTS14
Feedable L	GET34	TEK34	HTEK34	XTS34
Feedable T	GET40	TEK40	HTEK40	XTS40
Feedable X	GET38	TEK38	HTEK38	XTS38
Floating Feed	GET67	N/A	N/A	N/A
Conduit Continuation	GET13 & GET16	N/A	N/A	N/A
Flex Connect	GET23	N/A	N/A	N/A
Monopoint***	GES70	N/A	N/A	N/A
TRACK MOUNTING	SPECIFY FINISH: Black (-2); White (-3)			
Stem Kit	GEA37 / ()	SPUS / ()	SPUS / ()	SPUS / ()
End Feed Suspension	GEA11	SP4E	SP4E	SP4E
Universal Feed Suspension	GEA10	SP4P	SP4P	SP4P
L Feed Suspension	N/A	SP4L	SP4L	SP4L
T Feed Suspension	N/A	SP4T	SP4T	SP4T
X Feed Suspension	N/A	SP4X	SP4X	SP4X
TBAR Clip	GEA7	SPBT12	SPBT12	SPBT12
Cable Clip	N/A	SPB10	SPB10	SPB10
Threaded Rod Mounting Clip	GEA6			
Ceiling Cup for Cable Rod*	N/A	SPB30	SPB30	SPB30
Cable Lengths*	N/A	SPB34 (*)	SPB34 (*)	SPB34 (*)
SPECIFY FINISH: Black (-2); White (-3) / (): SPECIFY STEM LENGTH / (*): SPECIFY CABLE LENGTH, 5' OR 9'				

Dimensions shown are nominal. Spectrum Lighting is continually improving products and reserves the right to make changes that will not alter performance or appearance with or without written notice.



PROJECT:	TYPE:
CAT. NO.:	



TEK TRACK

2 CIRCUIT / 2 NEUTRAL

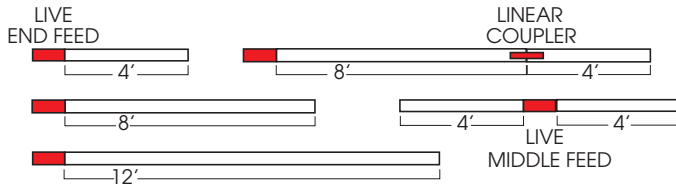
120 VOLT

USE TEK100 ADAPTOR

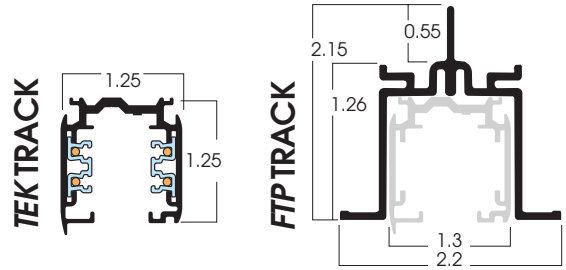
TEK
SERIES

COMPONENTS OF TEK TRACK INSTALLATION

TYPICAL TRACK INSTALLATIONS



- 2 Circuit/2 Neutral Track
- Architectural Grade.
- ISO 9002 Quality
- Integral Suspension rail.
- Copper connector/ polycarbonate components
- UL Listed.

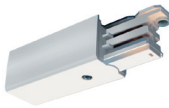


DESCRIPTION	PART #	PART #
	TRACK	RECESSED
4' TRACK	TEK44	FTP44
8' TRACK	TEK48	FTP48
12' TRACK	TEK412	FTP412

SPECIFY FINISH: Natural Aluminum (-1) Available for track lengths only; Black (-2); White (-3)

ACCESSORIES FOR TEK TRACK INSTALLATION

LIVE END
TEK11



FEEDABLE "L"
CONNECTOR
TEK34



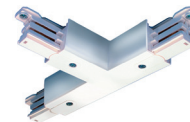
LIVE MIDDLE FEED
TEK14



DEAD END
TEK41



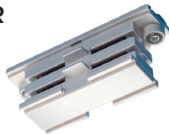
FEEDABLE "T"
CONNECTOR
RIGHT-TEK39, LEFT-TEK40



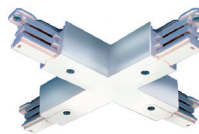
MONO POINT
1 CIRCUIT GES70
SPECIFY ADAPTOR GES66



LINEAR COUPLER
TEK21



FEEDABLE "X"
CONNECTOR
TEK38



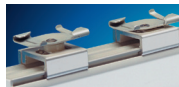
SPECIFY FINISH: Black (-2); White (-3)

MOUNTING ACCESSORIES FOR TEK TRACK

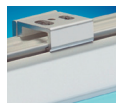
STEM KIT for GES/GET
SPUS ()
Specify Stem Length
12", 18", 24", 48"



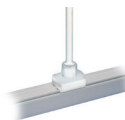
T-BAL CLIP
SKBT12



CABLE CLIP
SKB12



UNIVERSAL
SP4P



END FEED
SUSPENSION
SP4E



OTHER ACCESSORIES NOT SHOWN

DESCRIPTION	PART #
Ceiling Cup Cable	SKB30
*Cable Lengths (*5", 9")	SKB34 (*)

SPECIFY FINISH: Black (-2); White (-3)



Dimensions shown are nominal. Spectrum Lighting is continually improving products and reserves the right to make changes that will not alter performance or appearance with or without written notice.

SPECTRUM
LIGHTING, INC
www.speclight.com

PROJECT:

TYPE:

CAT. NO.:



994 Jefferson Street, Fall River, MA 02721 508.678.2303 FAX 508.678.2260