

SIGN LIGHT
INCANDESCENT

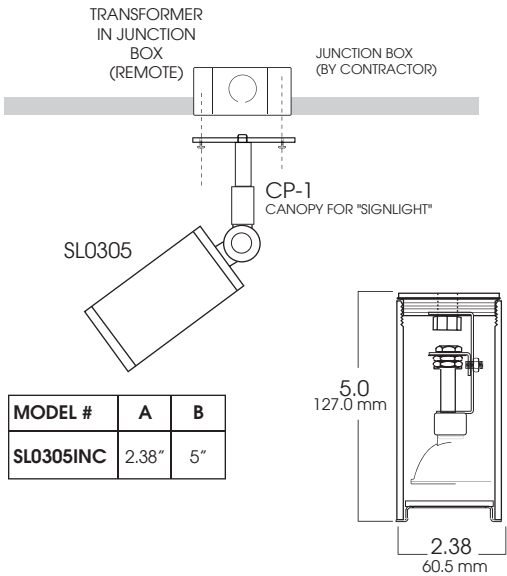
RLM
SERIES



GB- Gloss Black Finish Shown

PRODUCT INFORMATION:

- The Sign Light is perfect for a variety of sign and surface lighting applications.
- Machined aluminum housing, with die cast posi-lock swivel.
- MR16 and LED lamping available.
- Choose from 20 powdercoat finishes.
- WL-Wet location available.
- Manufactured and built to UL standard No 1598.



MODEL #	A	B
SL0305INC	2.38"	5"

MODEL	LAMP	WATTS	TRANSFORMER	MOUNTING	FINISH***
SL0305 Spectrum MR16 Sign Light	MR16	65w	E1 -Electronic, 120v E2 -Electronic, 277v	CP1 -Canopy SM -Surface Mount- WL -Wet Location	MB -Matte Black GW -Gloss White GB -Gloss Black EG -Evergreen VE -Verde Green AY -Aero Yellow BL -Blue Streak OR -Orange RD -Red Baron BZ -Bronze CO -Copper Metallic SI -Silver MM -Metal Finish (Brushed Copper, Brushed Aluminum, Polished Brass) <i>consult factory</i> CC -Cusom Color
SL0305	MR16	65	E1	CP1 / SM / WL	GB

* Specify Length
in inches

*** See SPECTRUM
Color Chart for
a full list

Dimensions shown are nominal. Spectrum Lighting is continually improving products and reserves the right to make changes that will not alter performance or appearance with or without written notice.



PROJECT:	TYPE:
CAT.	

