

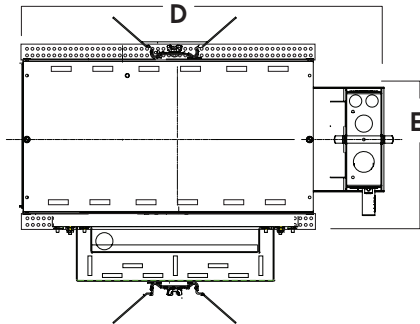
4" MODULAR LV SERIES FLUSH TRIM

RC4LV SERIES

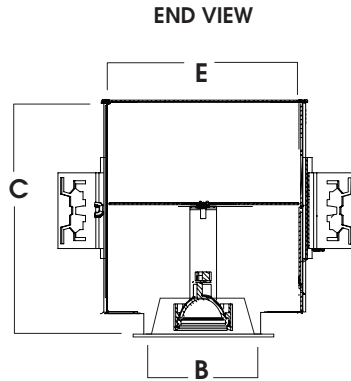
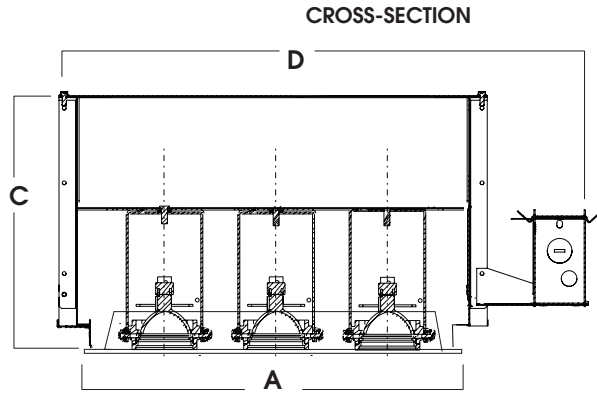
1 / 2 / 3 / 4 HEAD MR16

FEATURES & SPECIFICATIONS:

- EFEX² Series MR16 multiples offer MR16 lampping in a versatile multi-head platform.
- Flush Trim.
- Intended for Non-IC new construction.
- Supplied with 27" long, heavy ga. galvanized steel bar hangers.
- Electronic 120V transformers (standard). Options for 277 V and Magnetic transformers available.
- Manufactured and built to UL standard No 1598.



# OF LAMPS	APERTURE		H.	L.	W.	CUTOUT	WEIGHT
	A	B					
1 LAMP	4.0	4.0	9.0	12.5	7.5	5.1 x 5.1	6.3 LBS
2 LAMP	8.0	4.0	9.0	14.5	5.5	5.1 x 9.0	7.5 LBS
3 LAMP	12.0	4.0	9.0	18.5	7.5	5.1 x 13.0	8.9 LBS
4 LAMP	16.0	4.0	9.0	22.5	5.8	5.1 x 17.0	11.3 LBS



SERIES	LAMPS	TRANSFORMER	OPTIONS	INTERIOR FINISH	TRIM / FINISH	TRIM OPTIONS
RC44LV- 4"X4" / 1 Lamp Adjustable	1xMR16	E1 -Electronic, 120v E2 -Electronic, 277v MGN-1 -Magnetic Transformer 120v	CB24 -C-Channel bars 1-470 CCEA -Chicago Ceiling Plenum CCEA	MWI -Matte White MBI -Matte Black CCI -Custom Color	AR0204- SG -Semi-Diffused Low Iridescence GM -Corrugated SG GO -Gold Alzak	LN16 -Lens option- (See Lens Page) CL -Clear Glass Lens PG -Prismatic (I73) Lens
RC48LV- 4"X8" / 2 Lamp Adjustable	2xMR16	MGN-2 -Magnetic Transformer 277v LT1 -120v Dimmable Transformer for MR16 LED Lamps	CR -Corrosion Resistant 1-460 MWL(**) -Maximum Wattage dedicated transformer and label (20w, 37w, 50w)		AR0208- MB -Matte Black MW -Matte White PW -Pewter Alzak UM -Umber Alzak	IX -Micro Prism Industrex™ Lens FG -Frosted GLass Lens
RC412LV- 4"X12" / 3 Lamp Adjustable	3xMR16		FS -Fuse holder/ fuse		AR0212- WE -Wheat Alzak BF -Black Flange WF -White Flange CC -Custom Color	XB -Cross Blade Louver GS -Gasket NF -Narrow Flange
RC416LV- 4"X16" / 4 Lamp Adjustable	4xMR16				AR0216-	
RC412LV	3XMR16	E1	FS	MWI	AR0212 SG	NF

Dimensions shown are nominal. Spectrum Lighting is continually improving products and reserves the right to make changes that will not alter performance or appearance with or without written notice.



PROJECT:	TYPE:
CAT. NO.:	

