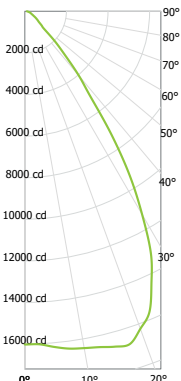


DMD22GY 220L 35K xx PR22 xx

CANDLEPOWER CURVE
TEST SP-01566



Delivered Lumens: 21210
Luminaire Watts: 171
LER: 124.04

INTENSITY
CANDELA
0° AZIMUTH

0°
0° 16022
5° 16201
15° 16696
25° 14409
35° 7325
45° 2063
55° 757
90° 100

CP at 0° (Nadir): 16022
CRI: 80+

ZONAL LUMENS

0° - 10°	1580	7%
0° - 20°	6278	30%
0° - 30°	12745	60%
0° - 40°	17348	82%
0° - 60°	19741	93%
0° - 80°	20466	96%
0° - 90°	20614	97%
Total	21210	100%

Beam Angle: 67°
Spacing Ratio: 1.11
Melanopic Ratio 0.55

SINGLE UNIT: PERFORMANCE
HORIZONTAL FOOTCANDLES
INITIAL DOWNLIGHT ONLY

Mounting Distance	FC at Beam Center	Diameter at Beam Angle	FC at Beam Edge
10 '	160 fc	13.3 '	46 fc
12 '	111 fc	16.0 '	32 fc
14 '	82 fc	18.7 '	24 fc
16 '	63 fc	21.3 '	18 fc
20 '	40 fc	26.7 '	12 fc
24 '	28 fc	32.0 '	8 fc
28 '	20 fc	37.3 '	6 fc
32 '	16 fc	42.6 '	5 fc

Lumen Multiplier: 160L x 0.73, 200L x 0.91
CCT Multiplier: 40K x 1.01

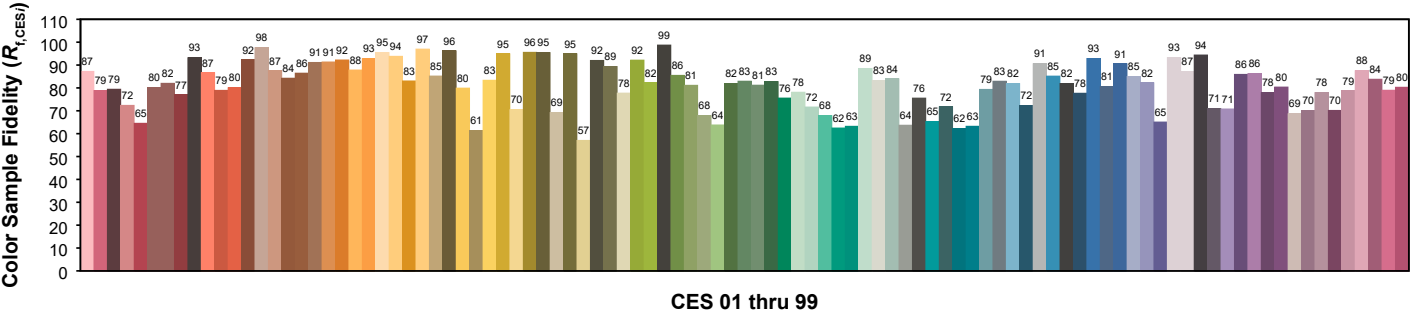
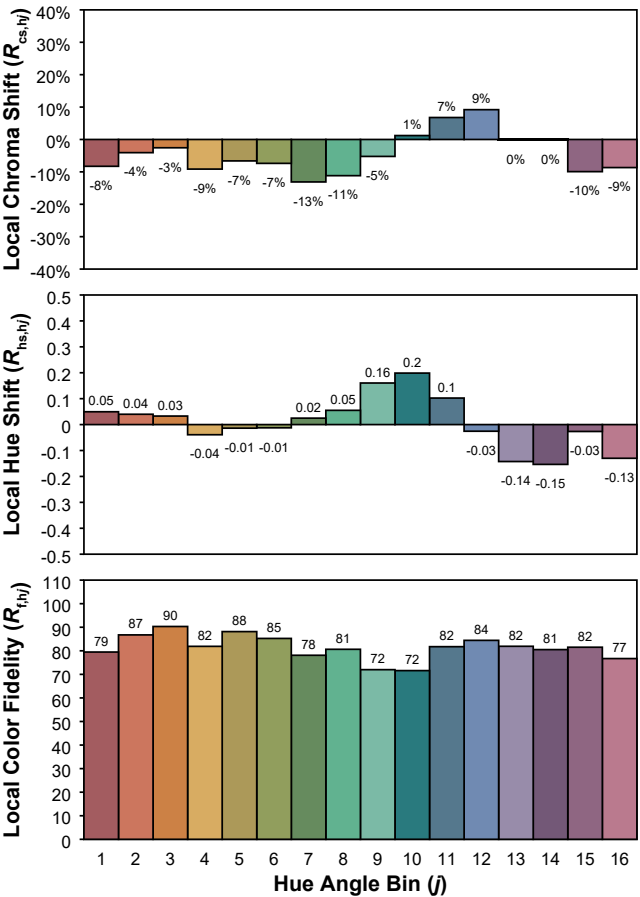
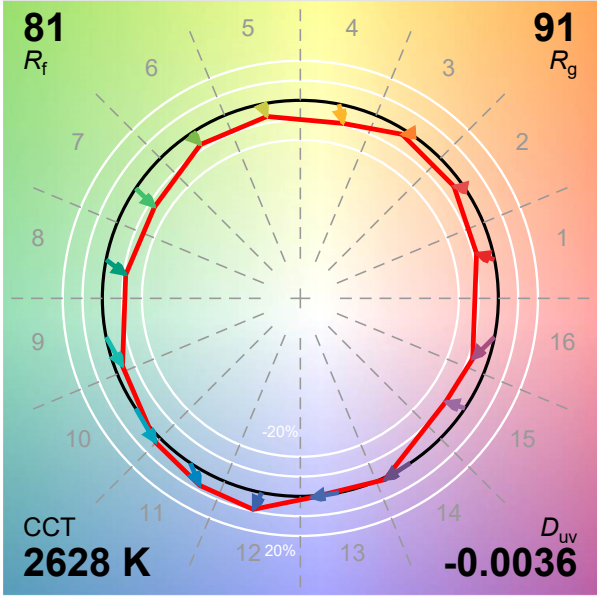
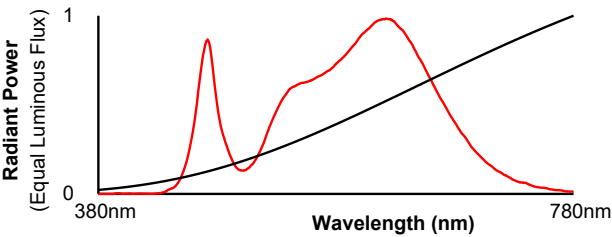
MULTIPLE UNITS: PERFORMANCE
80/50/20% REFLECTANCES
HORIZONTAL FOOTCANDLES AND WATTS/SQ FT

Ceiling Height	Fixture Spacing	RCR 2		RCR 4	
		FC +	W/Sq. Ft.	FC +	W/Sq. Ft.
22'	14'	86	0.71	106	1.02
26'	18'	54	0.45	67	0.65
32'	22'	46	0.38	39	0.38
Delivered Illuminance Rating: (DIR)		120 FC per W/Sq. Ft.		103 FC per W/Sq. Ft.	
4' Suspension Length to luminous aperture Square rooms used for multiple units: RCR 2: Length & Width = Ceiling Ht. - 6.5' x 5.00 RCR 4: Length & Width = Ceiling Ht. - 6.5' x 2.50 + Average Initial Footcandles at 2.5' Above Floor					

IES TM-30-18 Color Rendition Report

Manufacturer: Spectrum Lighting

Model: SP-01566 ~ DMD22GY 220L 35K xx PR22 xx



Luminous Flux: 18559 lm
Radiant Flux: 62 Wrad
Electrical Power: 171 W
Efficacy: 109 lm/W
Melanopic Flux: 10229 mel lm
Melanopic Ratio: 0.55
CCT: 2628K
xy Coordinates: 0.453, 0.399
u'v' Coordinates: 0.263, 0.522
Delta u'v': -0.0036

CIE u'v' (1976)

