



3" ROUND SUPER SHALLOW 1000 LUMENS MAX

UNIVERSAL HOUSINGS WITH INTERCHANGEABLE TRIMS

Spectrum's A Spec 3" recessed round downlight series features a super shallow plenum housing and variety of trims for accent and general illumination.

LUMENS AND WATTAGE CHART					
PART NUMBER	LUMENS	SOURCE LUMENS ¹	DELIVERED LUMENS ²	SYSTEM WATTS	LPW
RDSS3F	XT10L 70D	1000	807	11.1	73
RDSS3F	XT10L 90D	1000	765	11.1	69

PROJECT: _____

TYPE: _____

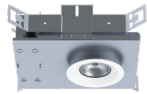


Open



AVAILABLE HOUSING TYPES

SR3SMO - New Construction / 10L Max



SR3SMR - Remodel Construction / 10L Max



FIXTURE HOUSING SPECIFICATION

SERIES		LUMENS ¹	DRIVER / DIMMING / VOLTAGE		OPTIONS ³	
SR3SMO	New Construction	83 CRI	E	Electronic Driver	1	120V
SR3SMR	Remodel Construction	XT10L 1000 Lm	DS10	10%, 0-10V	2	277V
			DO10	1%, 0-10V		
			DS2W1	1%, ELV/MLV, 120V		
			DLTE1	1%, Lutron® ELV/MLV, 120V		
			DL3E	1%, Lutron® EcoSystem®		
			EL10	1%, eldoLED		
			ED01	0.1%, eldoLED		
			DMX	DMX Control		
			BLU	Bluetooth LE		
					H12	12" - 24" Expandable Bars
					H06	6" - 12" Expandable Bars
					BH27	27" Solid Bars
					CB24	24" C-Channel Bars
					CH24	24" Chicago Bars
					FS	Fusing
					EM	Integral Emergency Battery
					EB	Black Housing

- Die-cast aluminum trim with a wide variety of options.
- Super Shallow plenum housing.
- Performance Xicato LED module for superior reliability and color consistency.
- Large selection of dimming and control options.
- Interchangeable optics and lenses.
- See SR3 for shallow plenum and SR3D for 1" deep regress trim.
- 5 year warranty on fixture and electronics.
- 10 year warranty on LED CCT.
- Bluetooth LE option.
- Sustainable fixture.
- Zhaga International Standard LED Module for future upgrades.
- 83CRI 2SDCM, 98CRI 1SDCM best in industry.

AVAILABLE TRIM / MODULE TYPES

RDSS3F



TRIM / MODULE SPECIFICATION

TRIM	CCT	OPTICS		FINISH ⁴		OPTIONS			
RDSS3F	Downlight	83 CRI	70D	72°	MW ⁵	Matte White	NL	No Lens	
		27K	2700K	90D	87°	MB	Matte Black	SO ⁷	Solite™ Micro Prism Lens
		30K	3000K			PT	Platinum Silver	GL	Clear Glass Lens
		35K	3500K			BZ	Bronze	FG	Frosted Glass Lens
		40K	4000K			CH	Charcoal	WL	Wet Location
		98 CRI ARTIST			OB	Oil Rubbed Bronze	WF ⁸	White Flange	
		27HK	2700K			AS	Sapphire		
		30HK	3000K			AM	Malachite		
		35HK	3500K			SN	Sun Gold		
		40HK	4000K			CO	Copper Metallic		
	96 CRI VIBRANT				GH	Graphite			
	30VK	3000K			CC ⁶	Custom Color			

EXAMPLE: SR3SMOXT10LDS2W1H12EM/RDSS3F27K70DMW5O

NOTES:

1 Nominal Source Lumens at Any CCT 2 Nominal Delivered Lumens 83 CRI at Any CCT with MW-SO Trim 3 Specify Mounting Bar as Brackets Are Different 4 Inside Trim And Flange Will Match Color Specified 5 Standard Finish 6 Contact Factory for Special Finishes 7 Standard Lens to Achieve Listed Beam Angle 8 Otherwise Flange Is Same Color As Interior Of Trim

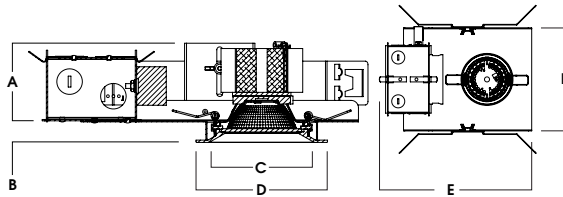
Dimensions and values shown are nominal. Spectrum Lighting continually works to improve products and reserves the right to make changes which may alter the performance or appearance of products.



HOUSING DIMENSIONS

SR3SMO - NEW CONSTRUCTION / 10L MAX

Non-IC rated, thermally protected frame-in kit for new construction. Non-IC designation requires insulation must be minimum of 3" from housing.



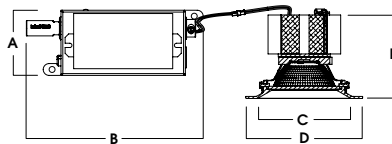
A	B	C	D	E	F
2.74	6.25	3.63	4.5	10.8	7.6
69.6 mm	15.9 mm	92.2 mm	114.3 mm	274.3 mm	193.0 mm

Fixture Weight: 4.0 lbs

Ceiling Cutout: Ø 4"

SR3SMR - REMODEL CONSTRUCTION / 10L MAX

Non-IC rated frame-in kit for existing construction. Non-IC designation requires insulation must be minimum of 3" from housing.



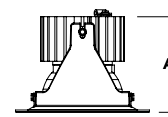
A	B	C	D	E
2.8	7.5	3.63	4.5	3.4
71.1 mm	190.5 mm	92.2 mm	114.3 mm	86.4 mm

Fixture Weight: 2.0 lbs

Ceiling Cutout: Ø 4"

TRIM / MODULE DATA

RDSS3F - DOWNLIGHT MODULE



Lm	A
XT10L	3.5

FEATURES

FRAME-IN KIT

Precision Die-formed 20 gauge galvanized steel housing and integral junction box with (3) 5/8", (3) 7/8" and (2) 1 1/8" knockouts. Junction box capacity: 8 12AWG rated for 90 °C. Tool-less driver and junction box access for ease of maintenance. Post-loc trim retention springs for 5/8"-1" ceiling thickness. Use PR2 for up to 2" thick ceiling. For thicker ceilings consult factory.

MOUNTING

A variety of mounting bars are available (excluding remodel). Ceiling materials must be rigid to support luminaire frame.

DRIVER

Several constant current dimming drivers are available. Power factor >.9 typical, 50/60Hz, 350-1050mA.

TRIM

Self-flanged, one-piece, die-cast aluminum finished in a variety of powdercoat options. Inside trim and flange are finished in same color unless otherwise specified (WF= White Flange). For trimless options see N-Line.

REMODEL

Features tethered power supply and junction box with sheathed wire.

LUMEN OUTPUT

72° and 87° optics with 1000 Lumens max.

LED

Zhaga compatible high performance Xicato module. Proprietary phosphor technology provides consistent and stable color with CCT control of +/- 100K over life of light engine.

EMERGENCY

Integral or remote 7W emergency battery options are available. Operates for 90 minutes and produces nominal 450 lumens.

BLUETOOTH

Integral Bluetooth LE option is available for dimming to .1%, grouping, remote access, electrical feedback and beacon technology.

FUSING

Integral optional fast blow fuse with fuse holder.

COLOR VARIATION

Standard CRI (83) within 2-step MacAdam Ellipse. High CRI (98) within 1x2-step MacAdam Ellipse.

LISTINGS

ETL/CSA listed for damp locations. Manufactured and tested to UL standard No. 1598/8750. ARRA compliant. Wet location (WL), City of Chicago Environmental Air (CCEA), and Insulated Ceiling (IC) options available.

WARRANTY

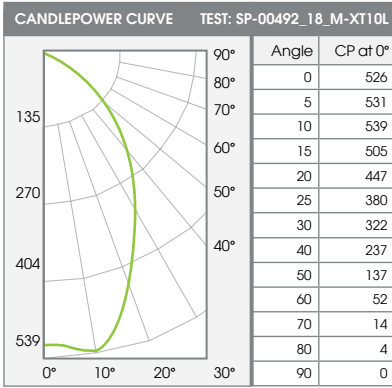
Fixtures, LEDs and drivers carry 5 year Spectrum warranty, as well as individual OEM warranty. Warranty is 5 years from date of manufacturing. LED system rated for operation in an ambient temperatures up to 25 °C.



PHOTOMETRIC DATA - 3" ROUND SUPER SHALLOW

SR3SM-XT-10L-E1-RDSS3x-xxK-70D-MW-SO

70 DEGREE - 83 CRI



Beam Angle	Lumens	%
0-10	50	6%
0-20	191	24%
0-30	365	45%
0-40	539	67%
0-60	767	95%
0-80	805	100%
0-90	807	100%
Total Lumens	807	100%

Mounting Height*	FC at Center	Diameter of Beam**	FC at Beam**
5'	21	7.0'	7
5.5'	17	7.7'	6
6.5'	12	9.1'	4
8'	8	11.2'	3

* From aperture to horizontal surface below.
** At IESNA defined Beam Angle, to 50% Max. CP.

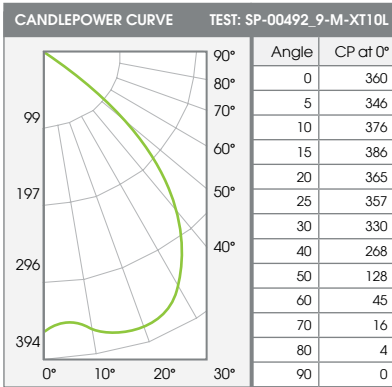
Ceiling Height	Fixture Spacing	RCR 2		RCR 3	
		FC*	W/Sq. Ft.	FC*	W/Sq. Ft.
8'	4'	32	0.44	25	0.40
	6'	18	0.25	16	0.25
	**8'	12	0.17	9	0.14
Delivered Illuminance Rating: (DIR)		69-72 FC per W/Sq. Ft.		62-64 FC per W/Sq. Ft.	

Square Rooms used for Multiple Units:
- RCR 2: Length & Width = Ceiling Ht. x 5.0
- RCR 3: Length & Width = Ceiling Ht. x 3.3
*Average Footcandles at floor
**Exceeds spacing criteria by 2% in one direction.

Delivered Lumens: 807 CP @ 0° (Nadir): 526 Beam Angle: 70.1°
Luminaire Watts: 11.1 CRI: 83 Spacing Ratio: 1.0
LER: 73

SS3SM-XT10L-E1-RD-SS3x-xxK-90D-MW-SO

90 DEGREE - 83 CRI



Beam Angle	Lumens	%
0-10	35	5%
0-20	142	19%
0-30	304	40%
0-40	495	65%
0-60	723	95%
0-80	763	100%
0-90	765	100%
Total Lumens	765	100%

Mounting Height*	FC at Center	Diameter of Beam**	FC at Beam**
5'	14	10.0'	4
5.5'	12	11.0'	3
6.5'	9	13.0'	2
8'	6	16.0'	1

* From aperture to horizontal surface below.
** At IESNA defined Beam Angle, to 50% Max. CP.

Ceiling Height	Fixture Spacing	RCR 2		RCR 3	
		FC*	W/Sq. Ft.	FC*	W/Sq. Ft.
8'	6'	17	0.25	15	0.25
	8'	12	0.17	9	0.14
	10'	7	0.11	6	0.10
Delivered Illuminance Rating: (DIR)		64-69 FC per W/Sq. Ft.		60-64 FC per W/Sq. Ft.	

Square Rooms used for Multiple Units:
- RCR 2: Length & Width = Ceiling Ht. x 5.0
- RCR 3: Length & Width = Ceiling Ht. x 3.3
*Average Footcandles at floor

Delivered Lumens: 765 CP @ 0° (Nadir): 360 Beam Angle: 90°
Luminaire Watts: 11.1 CRI: 83 Spacing Ratio: 1.36
LER: 69

