



# PRISMATIC PENDANT SERIES

## LX SERIES / 13000 LUMENS MAX LED



### PA1611LEDLX

#### APPLICATION

16" LED LX Series is a performance pendant that provides excellent vertical surface, general illumination.

#### FEATURES

Lumen Max prismatic acrylic lens is bright providing excellent area illumination. Single mid-powered LED modules produce up to 13000 source lumens. A wide variety of mounting options. LED module and driver are serviceable for future replacement and maintenance.

#### FINISH

Multi-stage polyester powder-coat process applied on our dedicated paint lines. All exposed materials are chromate pretreated to resist corrosion.

#### ELECTRONICS

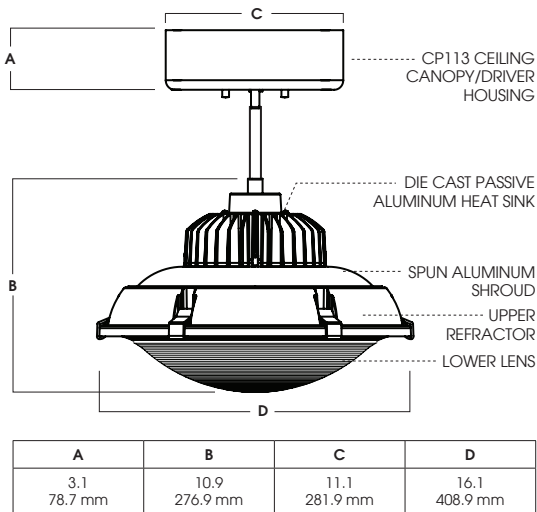
LED system features high brightness white Nichia LEDs. 3 step MacAdam Ellipse binning. Standard CRI: 85+. Higher CRI, R9 and custom LED configurations are available; consult factory. Variety of electronic 120V/277V and dimmable drivers.

#### CONSTRUCTION

Fixture shades are spun in our factory from 0.063 high purity aluminum. Refractor is molded UV stabilized acrylic with clear prismatic and frosted etched prismatic options.

#### CODE COMPLIANCE

ARRA Compliant. ETL/CSA listed for damp locations. Manufactured and tested to UL standards No. 1598/8750.



WATTAGE / LUMENS DATA				
PART NUMBER	SOURCE LUMENS <sup>1</sup>	DELIVERED LUMENS <sup>2</sup>	SYSTEM WATTS	LPW
PA1611LEDLX65L	6500	6138	54.1	113
PA1611LEDLX100L	10000	9207	81.1	114
PA1611LEDLX130L	13000	12112	103.9	117

SERIES	LUMENS <sup>1</sup>	CCT	DRIVER / DIMMING <sup>3</sup>	OPTIONS <sup>4</sup>	REFRACTOR	MOUNTING <sup>5</sup>	FINISH <sup>7</sup>
PA1611LEDLX	65L 100L 130L	6500 Lm 10000 Lm 13000 Lm	27K 2700K 30K 3000K 35K 3500K 40K 4000K	EX Electronic Driver, 120V/277V DS10X 10% 0-10V Dimming, 120V/277V DO10X 1% 0-10V Dimming, 120V/277V	FS Fuse Holder and Fuse 2CIR 2 Circuit	UPPER LENS FR1611 Diffuse Prismatic	MW <sup>6</sup> Matte White MB <sup>6</sup> Matte Black PT <sup>6</sup> Platinum TW Textured White TB Textured Black MT Textured Silver BZ Bronze OB Oil Rubbed Bronze CH Charcoal GH Graphite AC Champagne SN Sun Gold BR Brecchia Rust AN Anodic Natural CO Copper Metallic CC Custom Color
						LOWER LENS CL16 Clear Prismatic FL16 Diffuse Prismatic	EMERGENCY BATTERY OPTIONS EMRM7W 7W Remote Emergency Battery EMEN7W 7W Remote with Enclosure

EXAMPLE: PA1611LEDLX65L30KEXFS/PA1611/CL16/CP113HM72PT

#### NOTES:

1 Nominal Source Lumens at 4000K 2 Delivered Lumens at 3500K with FR1611, CL16, MW Finish 3 Contact Factory for Additional Options 4 See Product Options Page Details 5 See Mounting Page for Details on Components and Finishes 6 Specify Length in Inches: See Mounting Page for Available Lengths 7 Contact Factory for Special Finishes 8 Standard Finishes

Dimensions and values shown are nominal. Spectrum Lighting continually works to improve products and reserves the right to make changes which may alter the performance or appearance of products.



PROJECT:	TYPE:
CAT. NO.:	

WWW.SPECLIGHT.COM • 994 JEFFERSON STREET, FALL RIVER, MA 02721 • 508.678.2303 FAX 508.678.2260



# PRISMATIC PENDANT SERIES

## PHOTOMETRIC DATA

lumen max  
high bays



PA1611LEDLX-130L35KEX-FR1611CL16-xxMW

CANDLEPOWER CURVE		TEST: SP-00558			
		Angle	0°	45°	90°
110°		0	811	811	811
100°		5	891	891	891
90°		10	1110	1110	1110
80°		15	1506	1506	1506
70°		20	2103	2103	2103
60°		25	2600	2600	2600
50°		30	2908	2908	2908
40°		40	3062	3062	3062
		50	2682	2682	2682
		60	2168	2168	2168
		70	1368	1368	1368
		80	679	679	679
		90	293	293	293
		100	163	163	163
		110	142	142	142
		120	119	119	119
		130	85	85	85
		140	55	55	55
		150	32	32	32
		160	29	29	29
		170	37	37	37
		180	45	45	45

Delivered Lumens: 12112
Luminaire Watts: 103.9
LER: 117
CP @ 0° (Nadir): 811
Max Candela: 3073.3
CRI: 85
Beam Angle: 126.7°
Spacing Ratio: 3.02

Output Multipliers: 65L x 0.5068, 100L x 0.7602

ZONAL LUMENS		
0-10	92	1%
0-20	545	4%
0-30	1735	14%
0-40	3639	30%
0-60	8059	67%
0-80	1077	9%
0-90	11387	94%
90-180	725	6%
Total Lumens	12112	100%

SINGLE UNIT: PERFORMANCE			
INITIAL FOOTCANDLES AND BEAM ANGLE DIAMETERS			
Mounting Height*	FC at Center	Diameter of Beam**	FC at Beam**
6'	23	23.9'	2
8'	13	31.9'	1
10'	8	39.9'	1
12'	6	47.8'	1
16'	3	63.8'	0
20'	2	79.7'	0
24'	1	95.6'	0
28'	1	111.6'	0

\* From aperture to horizontal surface below.  
\*\* At IESNA defined Beam Angle, to 50% Max. CP.

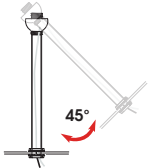


# LUMEN MAX MOUNTING OPTIONS

SOME OPTIONS NOT AVAILABLE ON ALL FIXTURES. CONSULT SPECIFICATION SHEETS. SEE INDIVIDUAL SPECIFICATION SHEETS OR CONSULT FACTORY FOR ADDITIONAL INFORMATION.  
NOTE: THIS IS TYPICAL OF LUMEN MAX SPECIFICATION FOR PENDANT MOUNTING. INDIVIDUAL FIXTURES OR PROJECTS MAY HAVE SPECIALIZED REQUIREMENTS.

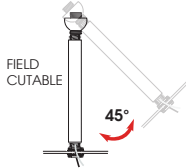
## MOUNTING TYPES

**HM\***  
HANG STRAIGHT  
45° SWIVEL 1/2" STEM - 3/8" NPT



ORDER: **HM** (Length)  
SPECIFY LENGTH:  
**HM3** - 3"    **HM24** - 24"  
**HM6** - 6"    **HM36** - 36"  
**HM12** - 12"    **HM48** - 48"  
**HM18** - 18"    **HM72** - 72"  
**HMLC(XX)**  
Custom Length  
(Specify in Inches)

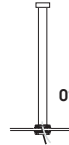
**HMAT\***  
HANG STRAIGHT ALL THREAD  
45° SWIVEL 1/2" STEM - 1/4" IP



ORDER: **HMAT** (Length)  
SPECIFY LENGTH:  
**HMAT12** - 12"  
**HMAT24** - 24"  
**HMAT36** - 36"  
**HMAT48** - 48"  
**HMAT72** - 72"  
**HMATLC(XX)**  
Custom Length  
(Specify in Inches)

FIELD CUT THREADED PIPE TO LENGTH NEEDED  
CUT PIPE COVER 3/4" SHORTER THAN THREADED PIPE  
SLIP PIPE COVER OVER THREADED PIPE

**PM\***  
RIGID PENDANT MOUNT  
RIGID 1/2" STEM - 3/8" NPT



ORDER: **PM** (Length)  
SPECIFY LENGTH:  
**PM3** - 3"    **PM24** - 24"  
**PM6** - 6"    **PM36** - 36"  
**PM12** - 12"    **PM48** - 48"  
**PM18** - 18"    **PM72** - 72"  
**PMLLC(XX)**  
Custom Length  
(Specify in Inches)

**CD**  
CORD / CABLE MOUNT  
SJ CORD WITH 1/16 SS CABLE



ORDER: **CD** (Length)  
SPECIFY LENGTH:  
**CD36** - 36"  
**CD72** - 72"  
**CD144** - 144"  
**CDLC(XX)**  
Custom Length  
(Specify in Inches)

\*MAXIMUM ONE PIECE STEM LENGTH IS 72". LONGER LENGTHS ARE POSSIBLE USING MULTIPLE STEMS AND COUPLERS.

## MOUNTING FINISH

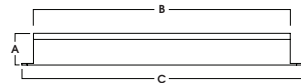
Standard Canopy / Stem or Cord mounting finish is matte white. Black fixtures receive matte black mounting finish, silver fixture receive silver mounting finish. Custom colors and fixture color canopy and stem are available upon request.

## MOUNTING COMPONENTS FINISH

FIXTURE COLOR	CANOPY / STEM / CORD COLOR
Matte White, Textured White	Matte White
Matte Black, Textured Black, Bronze, Oil Rubbed Bronze	Matte Black
Platinum, Textured Silver, Silver	Silver
All Others	Matte White
Custom Color	Canopy / Stem Same Color as Fixture

## REMOTE EMERGENCY BATTERY OPTIONS

**EMRM7W** - REMOTE EMERGENCY BATTERY  
(UP TO 12W, 50' MAX)

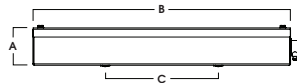


EM WATTAGE	A	B	C
EMRM5W	1.5	9.0	9.5
<b>EMRM7W*</b>	1.3	12.6	13.0
EMRM12W	1.3	12.8	13.3

\*STANDARD

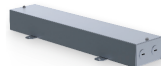


**EMEN7W** - REMOTE EMERGENCY BATTERY WITH ENCLOSURE  
(UP TO 12W, 50' MAX)



ENCLOSURE	A	B	C
EMEN5W	2.0	17.0	6.2
<b>EMEN7W*</b>	2.0	17.0	6.2
EMEN12W	2.0	17.0	6.2

\*STANDARD



## ADDITIONS

**FS - FUSING**

Slow blow type fuse protects fixture against voltage surges. Factory installed.



**LSP10 - SM - SURGE PROTECTOR**

Surge protector absorbs transient electrical spikes and protects fixtures and electronics 120/277v. Re-sets after surge. Factory Installed.



## SAFETY CABLE OPTIONS

**SC1** - SAFETY CABLE

1/16" stainless steel safety cable for added support. Standard kit is 18" and double barrel locks are provided. Approved for California seismic requirements. Rated at 50 lbs.



**SC2** - SAFETY CABLE

1/16" Stainless steel cable holds door to fixture

