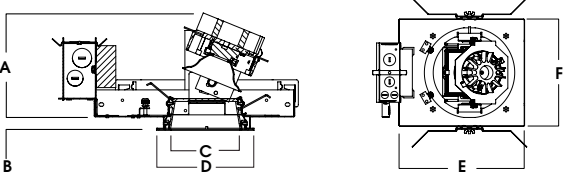
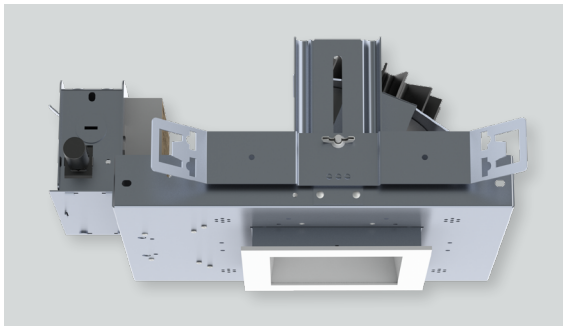
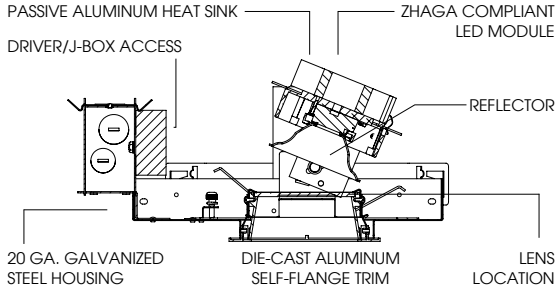




# 4" SQUARE ADJUSTABLE ACCENT XT SERIES / 4000 LUMENS MAX



A	B	C	D	E	F
10L-20L: 5.8	.625	4.0	5.4	13.2	9.5
30L-40L: 6.8	15.2 mm	101.6 mm	137.2 mm	335.3 mm	241.3 mm

## SAFO4XT - TRIM FLANGE / NON-IC RATED

### APPLICATION

Versatile 4" Square aperture recessed LED accent light with a wide range of lumens and optical controls.

### FEATURES

LED module tilts 35°, rotates 360°. Two-stage optical system for smooth light distribution and focus control. Quick change LED module with interchangeable optics for job site adjustment and fixture maintenance. Shallow plenum design. Tool-less driver and j-box access. Posi-lock trim retention torsion springs. See SAZO4 series for trimless plaster or wood ceiling.

### TRIM FINISH

A variety of powdercoat colors are available; flange will have matching finish. Semi-Diffuse and Haze Anodized trim will have Matte White Flange.

### ELECTRONICS

LED system features Xicato LED module with proprietary phosphor technology that provides consistent, stable color with CCT control of +/- 100K over life of the light engine. Base CRI is 83 with 2-step MacAdam Ellipse binning. High CRI is 98 with 1x2-step MacAdam Ellipse binning. Variety of electronic 120V/277V and dimming drivers.

### CONSTRUCTION

Housing/frame constructed of #20 ga. galvanized steel to resist corrosion. Self-Flanged one piece trim die-cast high purity aluminum and finished to specification.

### CODE COMPLIANCE

BAA Compliant. Non-IC rated. UL certified to meet US and Canadian standards. Suitable for dry or damp locations. Optional Wet location. Manufactured and tested to UL standards No. 1598/8750.

WATTAGE TO LUMENS UPDATE					
CURRENT PART NUMBER EXAMPLE	PREVIOUS PART NUMBER EXAMPLE	SOURCE LUMENS <sup>1</sup>	DELIVERED LUMENS <sup>2</sup>	SYSTEM WATTS	LPW
SAFO4XT10L	SAFO4LEDXI15W	1000	832	11.1	75
SAFO4XT13L	SAFO4LEDXI20W	1300	1120	15.0	75
SAFO4XT20L	SAFO4LEDXI33W	2000	1723	23.7	73
SAFO4XT30L	SAFO4LEDXI52W	3000	2585	34.6	75
SAFO4XT40L	N/A	4000	3317	39.9	83

SERIES	LUMENS <sup>1</sup>	CCT	OPTICS	DRIVER / DIMMING / VOLTAGE <sup>4</sup>	OPTIONS <sup>7</sup>	TRIM	FINISH	TRIM OPTIONS <sup>14</sup>	
SAFO4XT	83 CRI		XN <sup>3</sup> 10° ND 27° MD 40° WD 45° XW 50°	E Electronic Driver DS10 10% 0-10V DO10 1% 0-10V DS2W1 1% ELV/MLV, 120V DLTE1 1% Lutron® ELV/MLV, 120V DL33 Lutron Hi Lume 1% Dimming DL3E 1% Lutron® EcoSystem® LDE1 1% Lutron® EcoSystem® Fade EL10 1% eldoLED ED01 0.1% eldoLED DALI DALI Control DMXS <sup>5</sup> DMX Standard Configuration DMXC <sup>6</sup> DMX Non-Standard Custom	1 120V 2 277V	BH27 <sup>8</sup> 27" Solid Bars H12 12" - 24" Expandable Bars H06 6" - 12" Expandable Bars CB24 24" C-Channel Bars EM Integral Emergency Battery FS Fusing EB Black Housing CR Corrosion Resistant PR <sup>9</sup> Deep Ceiling Extension GR Goof Ring AMB Anti Microbial Finish	SA4FXT <sup>10</sup>	MW <sup>11</sup> Matte White MB Matte Black SG <sup>12</sup> Semi-Diffuse HZ <sup>12</sup> Haze Full Diffuse PT Platinum Silver BZ Bronze CH Charcoal AS Anodic Sapphire AM Anodic Malachite SN Sun Gold CO Copper Metallic GH Graphite AMB Anti Microbial Finish CC <sup>13</sup> Custom Color	SOX <sup>15</sup> Micro Prism Solite™ Lens GLX <sup>16</sup> Clear Glass Lens PGX Prismatic Glass Lens FGX Frosted Glass Lens SOW Micro Prism Solite™ Lens Wet Location GLW Clear Glass Lens Wet Location PGW Prismatic Glass Lens Wet Location FGW Frosted Glass Lens Wet Location
	10L 1000 Lm	27K 2700K							
	13L 1300 Lm	30K 3000K							
	20L 2000 Lm	35K 3500K							
	30L 3000 Lm	40K 4000K							
	40L 4000 Lm								
	98 CRI								
	10L 1000 Lm	27HK 2700K							
	13L 1300 Lm	30HK 3000K							
	20L 2000 Lm	35HK 3500K							
	30L 3000 Lm	40HK 4000K							

EXAMPLE: SAFO4XT10L35KMDE1H12/SA4FXTMWSOX

NOTES:  
 1 Nominal Source Lumens at Any CCT 2 Nominal Delivered Lumens 83 CRI at Any CCT with ND-MW, No Lens, Aimed at 0° 3 XN 20L Max at 83 and 98 CRI 4 Contact Factory for Additional Options 5 DMXS - Phoenix Connectors, Logarithmic Dimming, Requires DMX Signal to Turn On, 8-bit Network Resolution, Address of 1, Will Dim to Dark. See DMX Guide 6 DMXC - For Alternate Dim Curves, Addressing, Preset DMX Settings or Special Mounting, Contact quotes@speclight.com or Your Local Representative, See DMX Guide 7 See Product Options Page for Details 8 Standard Bar Hangers 9 Contact Factory 10 "F" Indicates Self-Flange Trim, Matte White Standard 11 Standard Finish 12 Anodized Reflector with Matte White Flange 13 Contact Factory for Special Finishes 14 Contact Factory for Special Lenses/Louvers 15 Standard Lens for MD, WD, XW 16 Standard Lens for XN and ND



PROJECT: \_\_\_\_\_  
 TYPE: \_\_\_\_\_



Dimensions and values shown are nominal. Spectrum Lighting continually works to improve products and reserves the right to make changes which may alter the performance or appearance of products.

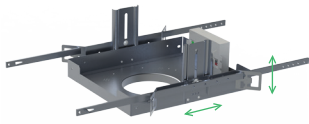
SOME OPTIONS NOT AVAILABLE ON ALL FIXTURES. CONSULT SPECIFICATION SHEETS.  
SEE INDIVIDUAL SPECIFICATION SHEETS OR CONSULT FACTORY FOR ADDITIONAL INFORMATION.

## MOUNTING BAR OPTIONS

All Spectrum Recessed Frames have wire mount provisions.

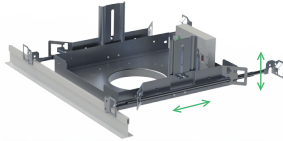
### BH27 - 27" SOLID BARS

Standard on all SG series recessed fixtures. May be field bent or cut to fit job site applications. #14 GA. galv. steel solid mounting bar. Fits all Spectrum recessed fixtures. Mounting holes and nail in feature. Vertical and horizontal adjustment.



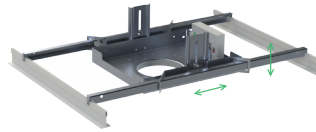
### BH12 - 12" - 24" EXPANDABLE BARS

Standard on all SP and optional on SG fixtures. Galvanized steel expandable bar mounting bars. Designed for T-Grid, wood and metal joists. Slot for T-Grid with optional screw lock-down. Nail-in feature for wood studs. Screw hole feature for metal studs. Compresses to 12" and expands to 24". Vertical and horizontal adjustment.



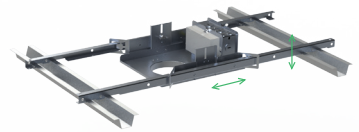
### CB24 / CB48 - C-CHANNEL BARS

Optional on all SG series fixtures. #16 GA galv. steel C-Channel bar. Designed for T-Bar ceilings. Available in 24" and 48" standard lengths. Custom sizes available. Strong enough to support all Spectrum recessed fixtures.



### CHC24 / CHC36 - CHICAGO BARS

Optional on all SG series available for 24" and 36" OC Ceiling designs. Proprietary latch design engages Chicago bar and locks fixtures in place. Optional tek screw down holes. Fixture locates at center of bar, but will adjust across full length of bar.



## EMERGENCY BATTERY

UL 1310 Certified, Class 2 Compliant. Rated for 10 year service life. Recyclable Ni-Cad battery. Includes single-piece TBTS test switch and charge indicator accessory. Constant power supply for superior lumen maintenance. Rated for 90 minute operation. This product has been tested on our OS, XT and GV LED systems and maintains 5-year warranty. Listed for use in damp locations and in enclosed and gasketed fixtures. May be ordered as remote mount for field installation up to 20' from fixture. Consult factory for remote EM options.

LED SERIES	EMLED5W SOURCE LUMENS (90 MIN)	EMLED7W* SOURCE LUMENS (90 MIN)	EMLED12W SOURCE LUMENS (90 MIN)
OS	500 Lm	700 Lm	1100 Lm
XT	600 Lm	800 Lm	1300 Lm
GV	700 Lm	900 Lm	1600 Lm

\*Standard Wattage Shipped

### EMLED5W

5W Emergency Battery for LED 120v/277v



### EMLED7W\*

7W Emergency Battery for LED 120v/277v



### EMLED12W

12W Emergency Battery for LED 120v/277v



## ADDITIONS

### FS - FUSING

Factory installed, slow blow type fuse protects fixture against voltage surges.



### GS - GASKET

Gasket for trims. Fits in back of trim flange. Best for rough ceilings.

### CR - CORROSION RESISTANT

All materials go through seven stage powder coat process. All untreated components are aluminum.

### AMB - ANTI MICROBIAL

Special Anti Microbial powdercoat finish resists and inhibits bacterial growth.

### PR - DEEP CEILING EXTENSION

All SG fixtures have standard 5/8" plaster neck and are designed to work in up to 1" thick ceiling. For deeper / thicker ceilings the PR plaster ring option (Specify Depth in inches).

May be factory installed. Consult factory for availability.



### GR - GOOF RING

Goof rings are spun .050 aluminum and finished matte white to match trim flange. These oversize rings cover up rough or poorly cut out holes. Goof rings seat and center trims. Special sizes available.



Dimensions and values shown are nominal. Spectrum Lighting continually works to improve products and reserves the right to make changes which may alter the performance or appearance of products.

<b>PROJECT:</b>	<b>TYPE:</b>
<b>CAT. NO.:</b>	



SOME OPTIONS NOT AVAILABLE ON ALL FIXTURES. CONSULT SPECIFICATION SHEETS.  
SEE INDIVIDUAL SPECIFICATION SHEETS OR CONSULT FACTORY FOR ADDITIONAL INFORMATION.

DIMMING TYPE		SYSTEM	DIMS TO	WIRING
DS101/2	120v/277v 0-10v Low Voltage Dimming	0-10v	10%	See Figure 1.
DO101/2	120v/277v 0-10v Low Voltage Dimming	0-10v	1%	See Figure 1.
DS2W1	120v Phase Cut Dimming	ELV or MLV	1%	See Figure 2.
DLTE1	120v Lutron® 2-Wire Phase Cut Dimming	Lutron® Phase Cut	1%	See Figure 2.
DL331/2	120v/277v Lutron® 3-Wire Dimming	Lutron® 3-Wire	1%	See Figure 3.
DL3E1/2	120v/277v Lutron® Ecosystem® Dimming	Lutron® Ecosystem®	1%	See Figure 4.
LDE1/2	120v/277v Lutron® Ecosystem® Dimming, Fades to Black	Lutron® Ecosystem®	1%	See Figure 4.
EL101/2	120v/277v 0-10v Low Voltage 1% ELDO LED Dimming	0-10v ELDO	1%	See Figure 1.
ED011/2	120v/277v 0-10v Low Voltage 0.1% ELDO LED Dimming	0-10v ELDO	0.1%	See Figure 1.
DALI	120v/277v DALI Digital Addressable Lighting Interface	DALI	1%	See Figure 5.
DMX	120v/277v DMX Addressable Lighting Interface	DMX	0%	See Figure 6.

Figure 1.

**0-10v Dimming**


Figure 2.

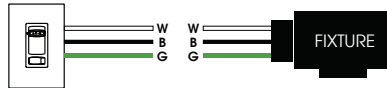
**ELV or MLV Phase Cut Dimming**


Figure 3.

**Lutron® 3-Wire**


Figure 4.

**Lutron® EcoSystem®**


Figure 5.

**DALI**


Figure 6.

**DMX**

**OTHER CONTROLS**
**FOR USE WITH**

<b>BLU</b>	Blue Tooth Low Energy Control Module	DS101/2
<b>WZIG</b>	ZIGBEE Wireless Control Module	DS101/2
<b>WENO</b>	EnOcean Wireless Control Module	DS101/2
<b>ENL</b>	Enlightened Control Module	DS101/2
<b>MOT</b>	Integral motion sensor. Includes dwell time, sensitivity and high/low light level settings.	DS101/2
<b>PHO</b>	Integral photo sensor. Includes dwell time, sensitivity and high/low light level settings.	DS101/2

Dimensions and values shown are nominal. Spectrum Lighting continually works to improve products and reserves the right to make changes which may alter the performance or appearance of products.

PROJECT:

TYPE:

CAT. NO.: