

4" ROUND LED TRIMLESS DOWNLIGHT TUNABLE COLOR (HUE) LU SERIES / 1800 LUMENS MAX LED



RDZO4LEDLU - TRIMLESS / NON-IC RATED

APPLICATION

4" Round LU LED downlight with flangeless trim platform with Tunable color (HUE) LED system. System can be programmed for scenes or set for manual control. Adjusts to over 300,000 colors as well as 1600K-6000K white light.

FEATURES

Two-stage optical system for smooth light distribution and focus control. Quick change LED module with interchangeable optics for job site adjustment and fixture maintenance. Shallow plenum design. Tool-less driver and j-box access. Posi-lock trim retention torsion springs. Integral 0.625" collar with deep ceiling option for up to 2" thick ceiling (PR).

TRIM FINISH

A variety of architectural powdercoat and anodized finishes are available. Plaster mesh trim retention included.

ELECTRONICS

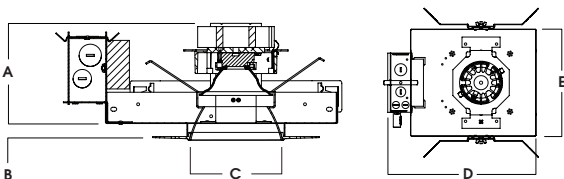
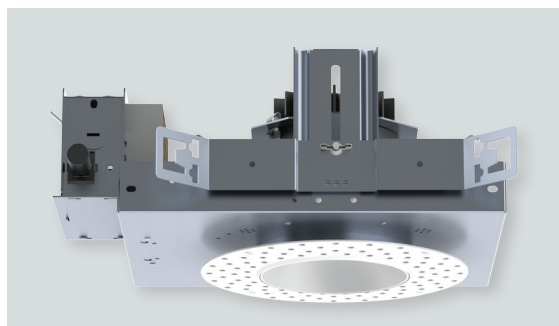
LED system features LED module with proprietary Tunable color (HUE) technology that provides consistent, stable color with CCT control of +/- 100K over life of the light engine. Base CRI is 90 with <2 MacAdam Ellipse binning. Variety of dimming controls (by Others).

CONSTRUCTION

Housing/frame constructed of #20 ga. galvanized steel to resist corrosion. Flangeless one piece trim high purity aluminum and finished to specification.

CODE COMPLIANCE

ARRA Compliant. Non-IC rated. ETL listed for damp locations. Optional Wet location. Manufactured and tested to UL standards No. 1598/8750.



A	B	C	D	E
6.1 154.9 mm	.625 15.2 mm	4.0 101.6 mm	14.7 373.4 mm	9.5 241.3 mm

WATTAGE TO LUMENS UPDATE			
CURRENT PART NUMBER EXAMPLE	PREVIOUS PART NUMBER EXAMPLE	SOURCE LUMENS ¹	SYSTEM WATTS
RDZO4LEDLU12L	RDZO4LEDLU11W	1250	20
RDZO4LEDLU14L	N/A	1400	25
RDZO4LEDLU16L	RDZO4LEDLU15W	1600	32
RDZO4LEDLU18L	RDZO4LEDLU20W	1800	32

RECESSED HOUSING SPECIFICATION						LED TRIM SPECIFICATION						
SERIES	LUMENS ¹	CCT / HUE	BEAM	CONTROL / VOLTAGE ²	OPTIONS	TRIM / FINISH ⁶		TRIM OPTIONS ⁹				
RDZO4LEDLU	12L	1250 Lm	40CMX	40K-16K	ND 20°	DU ₃ 1% 0-10V Dimming DL3E ₃ ECO System Dimming DMX ₃ DMX Control Dimming BT ₃ Bluetooth Control Dimming BH27 ⁴ 27" Flat Stock Hangers H12 Expandable Bar Hangers, 12" - 24" H06 Expandable Bar Hangers, 6" - 12" CB24 C-Channel Bars EB Black Housing PR ⁵ Deep Ceiling Extension REMLU ³ Remote Control	RD4N ⁷	SG ⁸	Semi-Diffuse	SOX ¹⁰	Micro Prism Solite™ Lens	
	14L	1400 Lm	60CMX	60K-27K	MD 30°			HZ	Haze Full Diffuse		PGX	Prismatic Glass Lens
	16L	1600 Lm			WD 40°			MB	Matte Black		GLX	Clear Glass Lens
	18L	1800 Lm			XW 50°			AC	Anodic Champagne		FGX	Frosted Glass Lens
						AS	Anodic Sapphire		SOW	Micro Prism Solite™ Lens Wet Location		
						PT	Platinum Silver		PGW	Prismatic Glass Lens Wet Location		
						OB	Oil Rubbed Bronze		GLW	Clear Glass Lens Wet Location		
						CH	Charcoal		FGW	Frosted Glass Lens Wet Location		
						AS	Anodic Sapphire					
						AM	Anodic Malachite					
						SN	Sun Gold					
						CO	Copper Metallic					
						GH	Graphite					
						AMB	Anti Microbial Finish					
						CC	Custom Color					

EXAMPLE: RDZO4LEDLU18L60CMXMDDMX1H12REMLU/RD4NSGSOX

NOTES:
 1 Nominal Source Lumens 2 Contact Factory for Additional Options 3 Refer to CMX Controls Page 4 Standard Bar Hangers 5 Contact Factory
 6 Contact Factory for Special Finishes 7 "N" Indicates Flangeless Trim 8 Standard Finish 9 Consult Factory for Special Lenses/Louvers 10 Standard Lens

Dimensions shown are nominal. Spectrum Lighting is continually improving products and reserves the right to make changes that will not alter performance or appearance with or without written notice.



PROJECT:	TYPE:
CAT. NO.:	



RECESSED CTM OPTIONS



DU1 / DU2 - Fixture can be operated by the following 3 methods (Does Not Require DCA).

1. Use with REMLU option for wireless control of dimming and color tuning. (See Figure 3)
2. Use with 0-10V controller and REMLU option for dimming control and presetting color levels with REMLU. (See Figure 4)
3. Use with 0-10V controller, plus CCT controller & REMLU option for separate dimming control, separate color tuning control & presetting color levels with REMLU. (See Figure 5 & 5B)

DL3E1 / DL3E2 - For control of dimming and color tuning with Eco System controller (Supplied by Lutron) Fixture supplied with DCA¹. (See Figure 1)

DMX1 / DMX2 - For control of dimming and color tuning with minimum 4 channel DMX controller (Supplied by Others) Fixture supplied with DCA¹. (See Figure 2 & 2B)

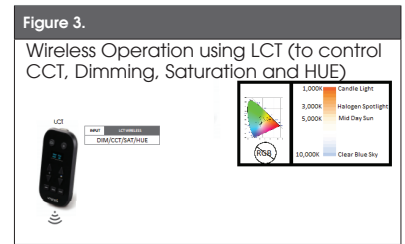
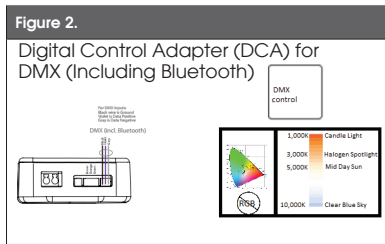
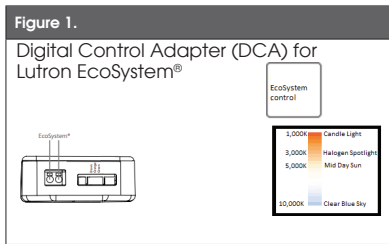
BT1 / BT2 - For control of dimming and color tuning with Bluetooth app (IOS Only) (Download by Others) Fixture supplied with DCA¹. (See Figure 2)

REMLU - is a remote wireless commissioning tool that allows complete control of fixture's Dimming, Color Saturation and Hue. Operates on Zigbee Platform @ 2.4GHz band. Maximum of 60 fixtures can be controlled with 5 separate present lighting scenes. Refer to installation instructions for wiring diagrams and operations.

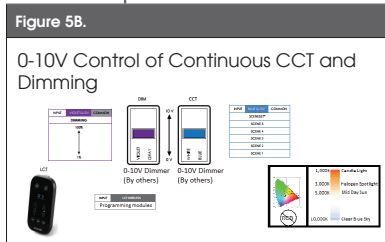
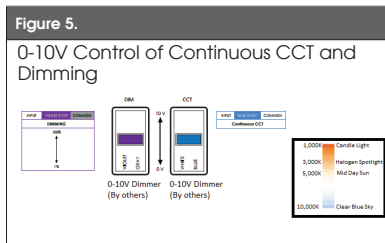
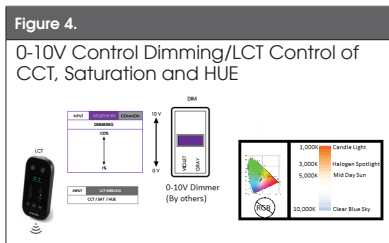
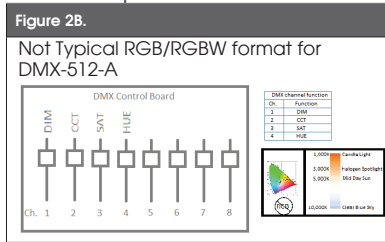
Consult Factory for additional questions and information.

NOTES:

¹ DCA - Is a digital Control adapter which enables fixtures powered by standard lighting protocols to be converted to a digital link.



**Requires araya Tunable Color iOS APP



Dimensions shown are nominal. Spectrum Lighting is continually improving products and reserves the right to make changes that will not alter performance or appearance with or without written notice.



PROJECT:	TYPE:
CAT. NO.:	

