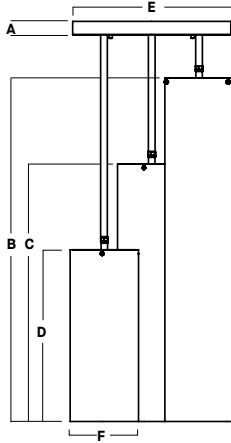




CYLINDRO CHANDELIER

GV SERIES / 3×2700 LUMENS



A	B	C	D	E	F
1.6	40.0	30.0	20.0	18.4	8.0
40.6 mm	1016 mm	762 mm	508 mm	467.4 mm	203.2 mm

PROJECT: _____

QUANTITY: _____ TYPE: _____

3XCYO830RDFALEDGV

APPLICATION

Cylindro 8" Pendant cluster features a clean design with a 3 luminaire grouping. 18" diameter central canopy with adjustable cord lengths for ease of installation.

FEATURES

Fixtures are designed and manufactured in our factory. Cylindro series acrylic pendant are fabricated from opal acrylic. LED module is upgradable for ease of maintenance. Electronic LED Driver in canopy for thermal management. A variety of finishes and mounting is available.

FINISH

Multi-stage polyester powder-coat process applied on our dedicated paint lines. See mounting and color pages for standard finishes.

ELECTRONICS

GV LED system features high brightness white Samsung LED's. 3 step MacAdam Ellipse binning. Standard CRI: 85+. Higher CRI, R9 and custom LED configurations are available; consult factory. Variety of electronic 120V/277V and dimming drivers.

CONSTRUCTION

Fixtures constructed of machined and formed aluminum and opal acrylic. Carbon gasket for optimal thermal management.

CODE COMPLIANCE

BAA Compliant. ETL listed for damp locations. Manufactured and tested to UL standards No. 1598/8750.

WATTAGE / LUMENS DATA		
PART NUMBER	SOURCE LUMENS ¹	SYSTEM WATTS
3XCYO830RDFALEDGV15L	4500	27
3XCYO830RDFALEDGV27L	8100	48

SERIES	LUMENS ¹	CCT	DRIVER / DIMMING ²	MOUNTING ³	OPTIONS ⁵	FINISH ⁷
3XCYO830RDFALEDGV	15L	1500 Lm	EX Electronic Driver, 120V/277V DO10X 1% 0-10V Dimming, 120V/277V DS2W1 2 Wire Phase Dimming, 120V	CP18⁴ Driver Housing / Ceiling Canopy	CM3X⁶ Cord Mounting Adjustable Length PM3X⁶ Pendant Mount	MW⁸ Matte White MB⁸ Matte Black PT⁸ Platinum Silver CC Custom Color
	27L	2700 Lm				See Page 2 for Full Range of Color Options (83-90082)

EXAMPLE: 3XCYO830RDFALEDGV15L30KEXCP18CMX36MW

NOTES:
 1 Nominal Source Lumens at 3500K 2 Contact Factory for Additional Options 3 See Mounting Page for Details on Components and Finishes 4 Required for Driver
 5 See Product Options Page for Details 6 Specify Length in Inches: See Mounting Page for Available Lengths 7 Contact Factory for Special Finishes 8 Standard Finishes



COLOR OPTIONS - POWDER COAT PAINT FINISHES

NOTE: NO PRINTED IMAGE CAN EQUAL THE EXACT COLOR OF FINISH ON METAL.
SEE INDIVIDUAL SPECIFICATION SHEETS OR CONSULT FACTORY FOR ADDITIONAL INFORMATION.



STANDARD CORD / STEM / CANOPY FINISHES

FIXTURE COLOR	STANDARD CORD COLOR	STANDARD CANOPY / STEM COLOR
Matte White, Textured White	Matte White	Matte White
Gloss White	Matte White	Gloss White
Matte Black, Gloss Black, Textured Black	Matte Black	Matte Black
All Others	Matte Black	Same Color as Fixture
Custom Color	Contact Factory	Contact Factory

PAINT TIMES

TIER	COST	AVERAGE PAINT TIME*
Tier 1 - Standard Finishes	\$	⓪
Tier 2 - Typical Finishes	\$\$	⓪⓪
Tier 3 - Special Metal Finishes	\$\$\$	⓪⓪⓪
Custom Color	Contact Factory	Contact Factory

*CONTACT FACTORY FOR SPECIFIC PRODUCT LEAD TIMES

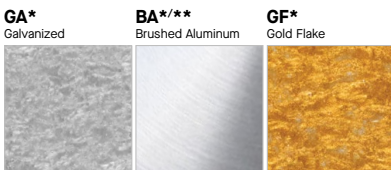
TIER 1 - STANDARD FINISHES



TIER 2 - TYPICAL FINISHES



TIER 3 - SPECIAL METAL FINISHES



CUSTOM COLOR FINISHES

CONTACT FACTORY

CC
Custom Color



*UNAVAILABLE FOR WET LOCATION

**UNAVAILABLE FOR INTERIOR

