



3" SQUARE DEEP DOWNLIGHT N-LINE 3000 LUMENS MAX

UNIVERSAL HOUSINGS WITH INTERCHANGEABLE TRIMS

Spectrum's A Spec 3" recessed square downlight series features a deep plenum housing and trim for general illumination.

LUMENS AND WATTAGE CHART					
PART NUMBER	LUMENS	SOURCE LUMENS ¹	DELIVERED LUMENS ²	SYSTEM WATTS	LPW
SDD3N	XT10L	1000	807	11.1	73
SDD3N	XT13L	1300	1087	15	72
SDD3N	XT20L	2000	1672	23.7	71
SDD3N	XT30L	3000	2509	34.6	73

PROJECT: _____

QUANTITY: _____ TYPE: _____



Lensed

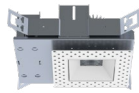


Open



AVAILABLE HOUSING TYPES

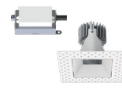
SS3DNMO - New Construction / 30L Max



SS3DNMI - IC New Construction / 20L Max



SS3DNMR - Remodel Construction / 30L Max



Shown with N-Line Plaster Fitter

FIXTURE HOUSING SPECIFICATION

SERIES	LUMENS ¹	DRIVER / DIMMING / VOLTAGE	OPTIONS	
SS3DNMO New Construction SS3DNMI IC New Construction SS3DNMR Remodel Construction	XT10L 1000 Lm XT13L 1300 Lm XT20L^{4,5} 2000 Lm XT30L^{4,5} 3000 Lm XN BEAM XN10L 1000 Lm XN13L³ 1300 Lm	E Electronic Driver DS10 10%, 0-10V DO10 1%, 0-10V DS2W1 1%, ELV/MLV, 120V DLTE1 1% Lutron® 2-Wire Forward Phase, 120V DL3E 1%, Lutron® EcoSystem® Fade EL10 1%, eldoLED ED01 0.1%, eldoLED DMXS ^{6,7} DMX Standard Configuration DMXC ^{6,7} DMX Non-Standard Custom BLU Bluetooth LE	1 120V 2 277V	H12 12" - 24" Expandable Bars HO6 6" - 12" Expandable Bars BH27 27" Solid Bars CB24 24" C-Channel Bars CH24 24" Chicago Bars FS Fusing EM ⁸ Integral Emergency Battery EMRM Remote Emergency Battery Pack EB Black Housing PR2 ⁹ 2" Thick Ceiling Adaptor

- Die-cast aluminum trim with a wide variety of options.
- Deep regressed trim.
- Universal housing accepts all trim types, including F-Line self-flange.
- Performance Xicato LED module for superior reliability and color consistency.
- Large selection of dimming and control options.
- Interchangeable optics and lenses.
- 5 year warranty on fixture and electronics.
- 10 year warranty on LED CCT.
- Bluetooth LE option.
- Zhaga International Standard LED Module for future upgrades.
- 83CRI 2SDCM, 98CRI 1SDCM best in industry.

AVAILABLE TRIM / MODULE TYPES



TRIM / MODULE SPECIFICATION

TRIM	CCT	OPTICS	FINISH	OPTIONS
SDD3N Downlight	83 CRI	XN⁸ 13° ND 26° MD 41° WD 49°	MW⁹ Matte White MB Matte Black PT Platinum Silver BZ Bronze CH Charcoal OB Oil Rubbed Bronze AS Sapphire AM Malachite SN Sun Gold CO Copper Metallic GH Graphite CC¹⁰ Custom Color	NL No Lens SO Micro Prism Solite™ Lens GL Clear Glass Lens FG Frosted Glass Lens PR2⁵ 2" Thick Ceiling Adaptor WL Wet Location
	27K 2700K 30K 3000K 35K 3500K 40K 4000K			
	98 CRI ARTIST ¹			
	27HK 2700K 30HK 3000K 35HK 3500K 40HK 4000K			

EXAMPLE: SS3DNMOXT10LDS2W1/H12/SDD3N27KMDMWNL

NOTES:

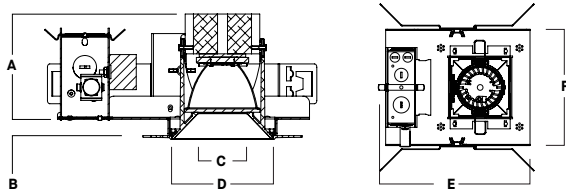
1 Nominal Source Lumens at Any CCT 2 Nominal Delivered Lumens 83 CRI at Any CCT with MD-MW-GL Trim 3 20L Max 4 For 20L HK and 30L Options Install Fixtures in Accordance with the Following Marked Spacing: (a) Center To Center of Adjacent Luminaires: 600mm (24in); (b) Top of Luminaire to overhead Building Member: 39mm (1.5in); (c) Luminaire Center to side Building Member: 300mm (12in) 5 Not Available with HK 6 Contact Factory 7 Not Available in IC 8 9mm, 13L Max, All XN Draw More Watts Than Other Optics; See Photometry 9 Standard Finish 10 Contact Factory for Special Finishes



HOUSING DIMENSIONS

SS3DNMO - NEW CONSTRUCTION / 30L MAX

Non-IC rated, thermally protected frame-in kit for new construction. Non-IC designation requires insulation must be minimum of 3" from housing.



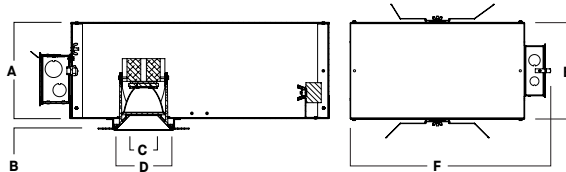
LED	A	B	C	D	E	F
XT10L	4.0	.625	3.37	4.5	9.57	7.65
XT13L	4.0	.625	3.37	4.5	9.57	7.65
XT20L	4.5	.625	3.37	4.5	9.57	7.65
XT30L	4.8	.625	3.37	4.5	9.57	7.65

Fixture Weight: 4.0 lbs

Ceiling Cutout: 4.12 Sq

SS3DNMI - IC NEW CONSTRUCTION / 20L MAX

IC rated frame-in kit for new construction with direct insulation contact and CCEA (Chicago Plenum) compatibility.



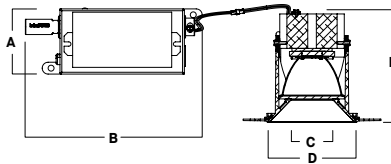
A	B	C	D	E	F
6.36	.625	3.37	4.5	9.5	10L-13L: 13.2
161.5 mm	15.9 mm	85.6 mm	114.3 mm	241.3 mm	20L: 19.2

Fixture Weight: 5.0 lbs

Ceiling Cutout: 4.12 Sq

SS3DNMR - REMODEL CONSTRUCTION / 30L MAX

Non-IC rated frame-in kit for existing construction. Non-IC designation requires insulation must be minimum of 3" from housing.



A	B	C	D	E
2.8	7.5	3.37	4.5	10L: 4.7
2.8	7.5	3.37	4.5	13L: 4.7
2.8	7.5	3.37	4.5	20L: 5.2
2.8	7.5	3.37	4.5	30L: 5.5

Fixture Weight: 2.0 lbs

Ceiling Cutout: 4" Sq

FEATURES

FRAME-IN KIT

Precision Die-formed 20 gauge galvanized steel housing and integral junction box with (3) 5/8", (3) 7/8" and (2) 1 1/8" knockouts. Junction box capacity: 8 12AWG rated for 90 °C. Tool-less driver and junction box access for ease of maintenance. Posi-loc trim retention springs for 5/8"-1" ceiling thickness. Use PR2 for up to 2" thick ceiling. For thicker ceilings consult factory.

MOUNTING

A variety of mounting bars are available (excluding remodel). Ceiling materials must be rigid to support luminaire frame.

DRIVER

Several constant current dimming drivers are available. Power factor >.9 typical, 50/60Hz, 350-1050mA.

TRIM

Flangeless, one-piece, die-cast aluminum finished in a variety of powdercoat options.

REMODEL

Features tethered power supply and junction box with sheathed wire.

LUMEN OUTPUT

XN narrow optic restricted to 1300 lumens max. All other optics and kelvins maintain 1000-3000 lumens range.

LED

Zhaga compatible high performance Xicato module. Proprietary phosphor technology provides consistent and stable color with CCT control of +/- 100K over life of light engine.

EMERGENCY

Integral or remote 7W emergency battery options are available. Operates for 90 minutes and produces nominal 450 lumens.

DMX

See [DMX Connections and Settings Guide](#) for default configurations. Contact quotes@speclight.com or your local representative for custom solutions.

BLUETOOTH

Integral Bluetooth LE option is available for dimming to .1%, grouping, remote access, electrical feedback and beacon technology.

FUSING

Integral optional fast blow fuse with fuse holder.

COLOR VARIATION

Standard CRI (83) within 2-step MacAdam Ellipse. High CRI (98) within 1x2-step MacAdam Ellipse.

LISTINGS

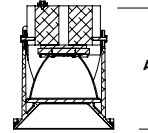
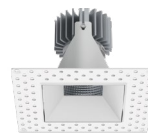
ETL/CSA listed for damp locations. Manufactured and tested to UL standard No. 1598/8750. ARRA compliant. Wet location (WL), City of Chicago Environmental Air (CCEA), and Insulated Ceiling (IC) options available.

WARRANTY

Fixtures, LEDs and drivers carry 5 year Spectrum warranty, as well as individual OEM warranty. Warranty is 5 years from date of manufacturing. LED system rated for operation in an ambient temperatures up to 25 °C.

TRIM / MODULE DATA

SDD3N - DOWNLIGHT MODULE

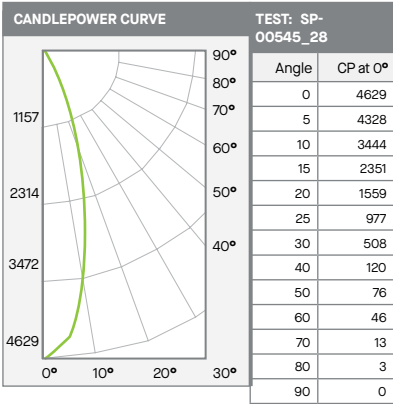


Lm	A
XT10L	4.7
XT13L	4.7
XT20L	5.2
XT30L	5.5



PHOTOMETRIC DATA - 3" SQUARE DEEP

SS3DNMx-XT30L-E1-SDD3x-xxK-ND-MW-SO



Delivered Lumens: 2068
 Luminaire Watts: 34.6
 LER: 60

CP @ 0° (Nadir): 4629
 CRI: 83

ZONAL LUMENS		
0-10	395	19%
0-20	1099	53%
0-30	1616	78%
0-40	1858	90%
0-60	2022	98%
0-80	2067	100%
0-90	2068	100%
Total Lumens	2068	100%

Beam Angle: 30.5°
 Spacing Ratio: 0.52

30L NARROW - 83 CRI

SINGLE UNIT: PERFORMANCE			
INITIAL FOOTCANDLES AND BEAM ANGLE DIAMETERS			
Mounting Height*	FC at Center	Diameter of Beam**	FC at Beam**
5.5'	153	3.0'	71
6.5'	110	3.5'	51
7.5'	82	4.1'	38
8.5'	64	4.6'	30
10'	46	5.5'	22
12'	32	6.5'	15
14'	24	7.6'	11
16'	18	8.7'	8

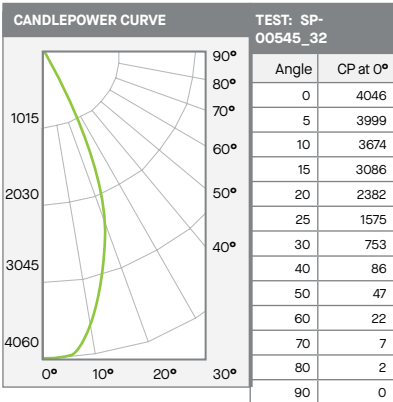
* From aperture to horizontal surface below.
 ** At IESNA defined Beam Angle, to 50% Max. CP.

FC Multipliers: 10L x 0.322, 13L x 0.433, 20L x 0.667
 W/Sq. Ft. Multipliers: 10L x 0.320, 13L x 0.433, 20L x 0.685

MULTIPLE UNITS: PERFORMANCE					
80/50/20% REFLECTANCES					
INITIAL FOOTCANDLES AND WATTS PER SQUARE FOOT					
Ceiling Height	Fixture Spacing	RCR 8		RCR 10	
		FC*	W/Sq. Ft.	FC*	W/Sq. Ft.
8'	2.5'	61	1.38	44	1.08
12'	4'	41	0.92	39	0.96
16'	5'	35	0.78	33	0.81
Delivered Illuminance Rating: (DIR)	44 FC per W/Sq. Ft.		41 FC per W/Sq. Ft.		

Square Rooms used for Multiple Units:
 - RCR 8: Length & Width = Ceiling Ht. x 1.25
 - RCR 10: Length & Width = Ceiling Ht. x 1.0
 * Average Footcandles at floor

SS3DNMx-XT30L-E1-SDD3x-xxK-MD-MW-GL



Delivered Lumens: 2509
 Luminaire Watts: 34.6
 LER: 73

CP @ 0° (Nadir): 4046
 CRI: 83

ZONAL LUMENS		
0-10	377	15%
0-20	1269	51%
0-30	2077	83%
0-40	2380	95%
0-60	2484	99%
0-80	2507	100%
0-90	2509	100%
Total Lumens	2509	100%

Beam Angle: 44.7°
 Spacing Ratio: 0.72

30L MEDIUM - 83 CRI

SINGLE UNIT: PERFORMANCE			
INITIAL FOOTCANDLES AND BEAM ANGLE DIAMETERS			
Mounting Height*	FC at Center	Diameter of Beam**	FC at Beam**
5.5'	134	4.5'	57
6.5'	96	5.3'	41
7.5'	72	6.2'	31
8.5'	56	7.0'	24
10'	40	8.2'	17
12'	28	9.9'	12
14'	21	11.5'	9
16'	16	13.2'	7

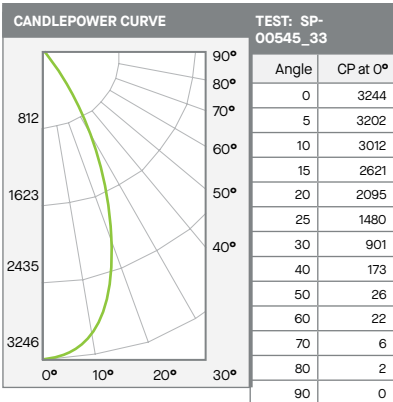
* From aperture to horizontal surface below.
 ** At IESNA defined Beam Angle, to 50% Max. CP.

FC Multipliers: 10L x 0.322, 13L x 0.433, 20L x 0.667
 W/Sq. Ft. Multipliers: 10L x 0.320, 13L x 0.433, 20L x 0.685

MULTIPLE UNITS: PERFORMANCE					
80/50/20% REFLECTANCES					
INITIAL FOOTCANDLES AND WATTS PER SQUARE FOOT					
Ceiling Height	Fixture Spacing	RCR 4		RCR 6	
		FC*	W/Sq. Ft.	FC*	W/Sq. Ft.
8'	5'	62	0.78	56	0.79
12'	8'	49	0.62	56	0.78
16'	10'	27	0.35	32	0.44
Delivered Illuminance Rating: (DIR)	66 FC per W/Sq. Ft.		60 FC per W/Sq. Ft.		

Square Rooms used for Multiple Units:
 - RCR 4: Length & Width = Ceiling Ht. x 2.5
 - RCR 6: Length & Width = Ceiling Ht. x 1.66
 * Average Footcandles at floor

SS3DNMx-XT30L-E1-SDD3x-xxK-WD-MW-NL



Delivered Lumens: 2383
 Luminaire Watts: 34.6
 LER: 69

CP @ 0° (Nadir): 3244
 CRI: 83

ZONAL LUMENS		
0-10	303	13%
0-20	1059	44%
0-30	1826	77%
0-40	2245	94%
0-60	2361	99%
0-80	2382	100%
0-90	2383	100%
Total Lumens	2383	100%

Beam Angle: 48.4°
 Spacing Ratio: 0.78

30L WIDE - 83 CRI

SINGLE UNIT: PERFORMANCE			
INITIAL FOOTCANDLES AND BEAM ANGLE DIAMETERS			
Mounting Height*	FC at Center	Diameter of Beam**	FC at Beam**
5.5'	107	4.9'	45
6.5'	77	5.8'	32
7.5'	58	6.7'	24
8.5'	45	7.6'	19
10'	32	9.0'	13
12'	23	10.8'	9
14'	17	12.6'	7
16'	13	14.4'	5

* From aperture to horizontal surface below.
 ** At IESNA defined Beam Angle, to 50% Max. CP.

FC Multipliers: 10L x 0.322, 13L x 0.433, 20L x 0.667
 W/Sq. Ft. Multipliers: 10L x 0.320, 13L x 0.433, 20L x 0.685

MULTIPLE UNITS: PERFORMANCE					
80/50/20% REFLECTANCES					
INITIAL FOOTCANDLES AND WATTS PER SQUARE FOOT					
Ceiling Height	Fixture Spacing	RCR 2		RCR 4	
		FC*	W/Sq. Ft.	FC*	W/Sq. Ft.
8'	6'	56	0.78	49	0.78
12'	9'	25	0.35	22	0.35
16'	12'	14	0.20	12	0.20
Delivered Illuminance Rating: (DIR)	82 FC per W/Sq. Ft.		73 FC per W/Sq. Ft.		

Square Rooms used for Multiple Units:
 - RCR 2: Length & Width = Ceiling Ht. x 5.0
 - RCR 4: Length & Width = Ceiling Ht. x 2.5
 * Average Footcandles at floor

