



CLARENCE
DAMP LOCATION
 DOMO SHADES

PROJECT: _____

QUANTITY: _____ TYPE: _____



CL0916GV
 PT - Platinum Silver
 FCI - Fixture Color Interior



CL0612GV
 MW - Matte White
 FCI - Fixture Color Interior



CL0916GV
 MB - Matte Black
 FCI - Fixture Color Interior



CL1324GV
 BZ - Bronze
 FCI - Fixture Color Interior

SERIES	LUMENS ¹	CCT	DRIVER / DIMMING ²	MOUNTING ⁵	CORD OPTIONS	INTERIOR ¹¹	FINISH ¹¹
CL0612GV	15L 1500 Lm	27K 2700K	EX³ Electronic Driver, 120V/277V	WALL MOUNT	STANDARD CORDS	MW¹² Matte White	MW¹² Matte White
CL0916GV	27L 2700 Lm	30K 3000K	DS10X³ 10%, 0-10V, 120V/277V	CP104⁶ Small Driver Canopy	CW White	CCI Custom Color	MB¹² Matte Black
CL1324GV	37L 3700 Lm	35K 3500K	DO10X⁴ 1%, 0-10V, 120V/277V	CP106⁶ Large Driver Canopy	CB Black	FCI Fixture Color Interior	PT¹² Platinum Silver
	55L 5500 Lm	40K 4000K		CP6/RMD Remote Mount Driver	CS Silver		CC Custom Color
				PA⁷ Mounting Arm Style		See Page 5 for Full Range of Color Options (83-90080)	See Page 5 for Full Range of Color Options (83-90080)
				SP90⁷ Straight Arm	DECORATIVE CORDS ¹⁰		
				CEILING MOUNT	See Page 5 for Decorative Braided Color Cords (83-90080)		
				RDC5 Small Driver Canopy			
				HM⁸ Hang Straight			
				AT⁸ Hang Straight All Thread			
				PM⁸ Rigid Pendant Mount			
				CD⁸ Cord / Cable Mount			
				CM⁸ Cord Mount			
				EMCR⁹ 10W Canopy Mounted EM			
				EMRM 7W Remote EM			
				EMEN 7W Remote with Enclosure			

EXAMPLE: CL0916GV55L27KEX/RDC5HM36MWIMW

NOTES:
 1 Nominal Source Lumens at 35K 2 Contact Factory for Additional Options 3 37L Max with CP104 4 Available with CP106/RDC5 Only 5 See Mounting Page for Details on Components and Finishes 6 Contact Factory for Knock Out Holes 7 See Mounting Page for Available Arm Options 8 Specify Length in Inches: See Mounting Page for Available Lengths 9 EMCR Replaces RDC5 10 Decorative Cord 120" Max Length 11 See Color Page for More Options/Consult Factory for Special Finishes 12 Standard Finishes



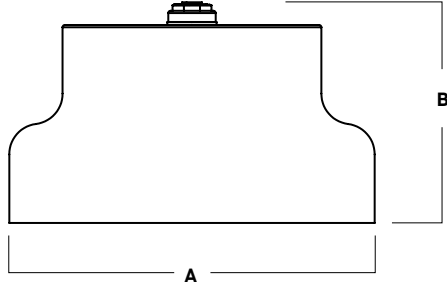


CLARENCE DAMP LOCATION DOMO SHADES

LUMENS / WATTAGE DATA				
PART NUMBER	SOURCE LUMENS ¹	DELIVERED LUMENS ²	SYSTEM WATTS	LPW
CL0916GV15L	1500	1194	10	119
CL0916GV27L	2700	2079	18	116
CL0916GV37L	3700	3008	26	116
CL0916GV55L	5500	4424	39	113

¹ Nominal Source Lumens at 35K ² Nominal Delivered Lumens at 35K

HOUSING DIMENSIONS



Dimensioned with **CL0916GV**

SERIES	A	B
CL0612GV	12.1	7.5
CL0916GV	16.1	9.7
CL1324GV	24.0	14.0

APPLICATION

Clarence offers a clean design for decorative area lighting.

FEATURES

SpecLume series fixtures offer contemporary style with functional luminaire performance. Passive integral heat sink. LED module and drivers are replaceable and upgradable. Standard diffuser for visual comfort and to eliminate LED source visibility. A variety of mounting options are available.

FINISH

Multi-stage polyester powder-coat process applied on our dedicated paint lines. See mounting and color pages for standard finishes. Interior is Matte White unless specified. Custom Color interior finish available.

ELECTRONICS

GV LED system features high brightness white Samsung LED's. 3-step MacAdam Ellipse binning. Standard CRI: 80+. Higher CRI, R9 and custom LED configurations are available; consult factory. Variety of electronic 120V/277V and dimming drivers.

CONSTRUCTION

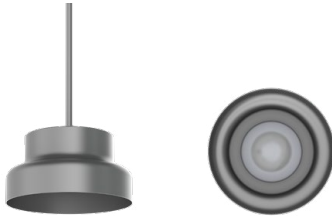
Fixtures are spun in our factory from 0.063 high purity aluminum. Passive machined aluminum heat sink for optimal thermal management. Low profile frosted glass diffuser over LEDs to eliminate direct source visibility.

CODE COMPLIANCE

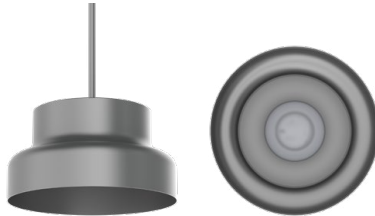
BAA compliant. ETL certified to meet US and Canadian standards. Suitable for dry or damp locations. Manufactured and tested to UL standards No. 1598/8750.

SERIES SIZES

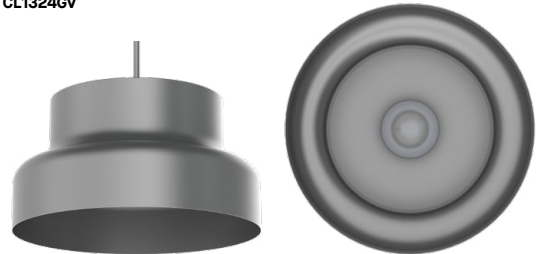
CL0612GV



CL0916GV



CL1324GV



WALL MOUNT

(SEE MOUNTING PAGES FOR MORE OPTIONS & DIMENSIONS.)

PA_
MOUNTING ARM STYLE



CL0916GV SHOWN WITH CP104PA23

CEILING MOUNT

(SEE MOUNTING PAGES FOR MORE OPTIONS & CANOPY DIMENSIONS.)

HM / AT / PM
HANG STRAIGHT / ALL THREAD / PENDANT



CL0916GV SHOWN WITH RDC5PM

CD
CORD / CABLE MOUNT



CL0916GV SHOWN WITH RDC5CD

CM
CORD MOUNT



CL0916GV SHOWN WITH RDC5CM





CLARENCE

DAMP LOCATION

DOMO SHADES / PHOTOMETRIC DATA

DECORATIVE

CL0612GV 55L 35K XX TF2 MWI MW

CANDLEPOWER CURVE TEST SP-01250	INTENSITY CANDELA 0° AZIMUTH	ZONAL LUMENS	SINGLE UNIT: PERFORMANCE DIRECT FOOTCANDLES BASED ON DOWNLIGHT ONLY				MULTIPLE UNITS: PERFORMANCE 80/50/20% REFLECTANCES INITIAL FOOTCANDLES AND WATTS PER SQUARE FOOT						
			Mounting Height AFF	FC at Center on Floor	Beam Diameter	FC at Beam Edge	Ceiling Height	Fixture Spacing	RCR 2		RCR 4		
	0°	0° - 10° 154 3%	8'	25 fc	24.3'	2 fc	12'	8'	72	0.70	36	0.44	
	0°	0° - 20° 593 13%	10'	16 fc	30.4'	1 fc	16'	10'	31	0.30	35	0.43	
	5°	0° - 30° 1276 28%	12'	11 fc	36.5'	1 fc	22'	12'	26	0.25	15	0.18	
	15°	0° - 40° 2130 47%	14'	8 fc	42.6'	1 fc	Delivered Illuminance Rating: (DIR)		104 FC per W/Sq. Ft.		82 FC per W/Sq. Ft.		
	25°	0° - 60° 3834 85%	16'	6 fc	48.7'	1 fc	2' Suspension Length to luminous aperture Square rooms used for multiple units: RCR 2: Length & Width = Ceiling Ht. - 4.5' x 5.00 RCR 4: Length & Width = Ceiling Ht. - 4.5' x 2.50 * Average Footcandles at 2.5' Above Floor						
	35°	0° - 80° 4437 99%	20'	4 fc	60.9'	0 fc							
	45°	0° - 90° 4489 100%	24'	3 fc	73.0'	0 fc							
	55°	871	28'	2 fc	85.2'	0 fc							
	90°	8	Total										

Delivered Lumens: 4502
Luminaire Watts: 39.1
LER: 115.14

CP at 0° (Nadir): 1591
CR: 80+

Beam Angle: 113°
Spacing Ratio: 1.32

Lumen Multiplier: 15L x 0.27, 27L x 0.47, 37L x 0.68
CCT Multiplier: 27K x 0.97, 30K x 0.99, 40K x 1.03

See Page 1 for System Watts for all outputs

CL0916GV 55L 35K XX TF2 MWI MW

CANDLEPOWER CURVE TEST SP-01251	INTENSITY CANDELA 0° AZIMUTH	ZONAL LUMENS	SINGLE UNIT: PERFORMANCE DIRECT FOOTCANDLES BASED ON DOWNLIGHT ONLY				MULTIPLE UNITS: PERFORMANCE 80/50/20% REFLECTANCES INITIAL FOOTCANDLES AND WATTS PER SQUARE FOOT						
			Mounting Height AFF	FC at Center on Floor	Beam Diameter	FC at Beam Edge	Ceiling Height	Fixture Spacing	RCR 2		RCR 4		
	0°	0° - 10° 162 4%	8'	26 fc	22.3'	3 fc	12'	8'	72	0.70	37	0.44	
	0°	0° - 20° 623 14%	10'	17 fc	27.8'	2 fc	16'	10'	31	0.30	35	0.43	
	5°	0° - 30° 1341 30%	12'	12 fc	33.4'	1 fc	22'	12'	26	0.25	15	0.18	
	15°	0° - 40° 2241 51%	14'	9 fc	38.9'	1 fc	Delivered Illuminance Rating: (DIR)		103 FC per W/Sq. Ft.		82 FC per W/Sq. Ft.		
	25°	0° - 60° 3895 88%	16'	7 fc	44.5'	1 fc	2' Suspension Length to luminous aperture Square rooms used for multiple units: RCR 2: Length & Width = Ceiling Ht. - 4.5' x 5.00 RCR 4: Length & Width = Ceiling Ht. - 4.5' x 2.50 * Average Footcandles at 2.5' Above Floor						
	35°	0° - 80° 4358 99%	20'	4 fc	55.6'	0 fc							
	45°	0° - 90° 4412 100%	24'	3 fc	66.8'	0 fc							
	55°	705	28'	2 fc	77.9'	0 fc							
	90°	3	Total										

Delivered Lumens: 4424
Luminaire Watts: 39.1
LER: 113.15

CP at 0° (Nadir): 1677
CR: 80+

Beam Angle: 108°
Spacing Ratio: 1.34

Lumen Multiplier: 15L x 0.27, 27L x 0.47, 37L x 0.68
CCT Multiplier: 27K x 0.97, 30K x 0.99, 40K x 1.03

See Page 1 for System Watts for all outputs

CL1324GV 55L 35K XX TF2 MWI MW

CANDLEPOWER CURVE TEST SP-01252	INTENSITY CANDELA 0° AZIMUTH	ZONAL LUMENS	SINGLE UNIT: PERFORMANCE DIRECT FOOTCANDLES BASED ON DOWNLIGHT ONLY				MULTIPLE UNITS: PERFORMANCE 80/50/20% REFLECTANCES INITIAL FOOTCANDLES AND WATTS PER SQUARE FOOT						
			Mounting Height AFF	FC at Center on Floor	Beam Diameter	FC at Beam Edge	Ceiling Height	Fixture Spacing	RCR 2		RCR 4		
	0°	0° - 10° 172 4%	8'	28 fc	9.8'	4 fc	12'	8'	72	0.70	37	0.44	
	0°	0° - 20° 660 15%	10'	18 fc	12.3'	2 fc	16'	10'	31	0.30	36	0.43	
	5°	0° - 30° 1420 32%	12'	12 fc	14.8'	2 fc	22'	12'	26	0.25	15	0.18	
	15°	0° - 40° 2376 53%	14'	9 fc	17.2'	1 fc	Delivered Illuminance Rating: (DIR)		104 FC per W/Sq. Ft.		84 FC per W/Sq. Ft.		
	25°	0° - 60° 3910 88%	16'	7 fc	19.7'	1 fc	2' Suspension Length to luminous aperture Square rooms used for multiple units: RCR 2: Length & Width = Ceiling Ht. - 4.5' x 5.00 RCR 4: Length & Width = Ceiling Ht. - 4.5' x 2.50 * Average Footcandles at 2.5' Above Floor						
	35°	0° - 80° 4378 98%	20'	4 fc	24.6'	1 fc							
	45°	0° - 90° 4440 100%	24'	3 fc	29.5'	0 fc							
	55°	551	28'	2 fc	34.4'	0 fc							
	90°	9	Total										

Delivered Lumens: 4452
Luminaire Watts: 39.1
LER: 113.86

CP at 0° (Nadir): 1792
CR: 80+

Beam Angle: 102°
Spacing Ratio: 1.31

Lumen Multiplier: 15L x 0.27, 27L x 0.47, 37L x 0.68
CCT Multiplier: 27K x 0.97, 30K x 0.99, 40K x 1.03

See Page 1 for System Watts for all outputs



MOUNTING & ACCESSORIES

SOME OPTIONS NOT AVAILABLE ON ALL FIXTURES. CONSULT SPECIFICATION SHEETS. SEE INDIVIDUAL SPECIFICATION SHEETS OR CONSULT FACTORY FOR ADDITIONAL INFORMATION.
NOTE: THIS IS TYPICAL OF SPECULUME SPECIFICATION FOR PENDANT MOUNTING. INDIVIDUAL FIXTURES OR PROJECTS MAY HAVE SPECIALIZED REQUIREMENTS.



WALL MOUNTING

CP104 - SMALL DRIVER CANOPY (STANDARD)
MAY BE USED AS SPLICE BOX FOR DIRECT FEED

Ø 5.5
4.0

CP106 - LARGE DRIVER CANOPY
MAY BE USED AS SPLICE BOX FOR DIRECT FEED

Ø 7.5
5.0

CP6/RMD - REMOTE MOUNT DRIVER
MOUNTS DIRECTLY TO WALL OR OCTAGON STYLE J-BOX

Ø 4.7
1.8

CUSTOM AND OTHER WALL ARMS AVAILABLE - CONTACT FACTORY. ARMS MAY BE FIELD CUT ON WALL SIDE - FIXTURE SIDE THREADED 3/4" NPT REQUIRES SEALANT FOR WET LOCATION.

PA15 15.0
9.8 8.3

PA17 17.0
7.0

PA24 15.0
18.0 9.5

PA32 32.6
19.5 30.0
10.5 32.2

PA16 - Front Wall Mount
15.0
25.0 13.0

PA22 22.0
7.5 12.5

PA26 28.5
12.7

PA23 23.0
7.0

SP90(xx)
Designed for Straight Arm Mounting
SPECIFY LENGTH

EXAMPLE: SP9024 - STRAIGHT PIPE 24" LONG

PA36 36.0
7.0

PA16F - Back Wall Mount
20.0
25.0 13.0

PA23(xx) SPECIFY LENGTH
7.0

EXAMPLE: PA2330 - 30" PA23

PA90 (Wxx)(Dxx)
SPECIFY LENGTH (Wxx)
SPECIFY DROP (6.5 Minimum) (Dxx)

EXAMPLE: PA90W20D07 - 90° PIPE 20" LONG 7" DEEP THREADED AT FIXTURE END

PA48 48.0
7.0

PA901212
12.0
12.0

CEILING MOUNTING

RDC5 - SMALL DRIVER CANOPY (STANDARD)
MOUNTS TO 4" OCTO J-BOX

Ø 5.3
2.5

HM*
HANG STRAIGHT
45° SWIVEL 1/2" STEM - 3/8" NPT

ORDER: **HM** (Length)
SPECIFY LENGTH:
HM3 - 3" **HM24** - 24"
HM6 - 6" **HM36** - 36"
HM12 - 12" **HM48** - 48"
HM18 - 18" **HM72** - 72"
HMLC(XX)
Custom Length
(Specify in Inches)

AT**
HANG STRAIGHT ALL THREAD
45° SWIVEL 1/2" STEM - 1/4" IP

ORDER: **AT** (Length)
SPECIFY LENGTH:
AT12 - 12" **AT48** - 48"
AT24 - 24" **AT60** - 60"
AT36 - 36" **AT72** - 72"
FIELD CUT THREADED PIPE TO LENGTH W/RESEAL CAP PIPE COVER 2 1/8" SHORTER THAN THREADED PIPE SUP. PIPE COVER OVER THREADED PIPE

PM*
RIGID PENDANT MOUNT
RIGID 1/2" STEM - 3/8" NPT

ORDER: **PM** (Length)
SPECIFY LENGTH:
PM3 - 3" **PM24** - 24"
PM6 - 6" **PM36** - 36"
PM12 - 12" **PM48** - 48"
PM18 - 18" **PM72** - 72"
PMLLC(XX)
Custom Length
(Specify in Inches)

CD
CORD / CABLE MOUNT
SJ CORD WITH 1/16 SS CABLE

ORDER: **CD** (Length)
SPECIFY LENGTH:
CD36 - 36"
CD72 - 72"
CD144 - 144"
CDLC(XX)
Custom Length
(Specify in Inches)

CM
CORD MOUNT
SJ CORD WITH STRAIN RELIEF

ORDER: **CM** (Length)
SPECIFY LENGTH:
CM36 - 36"
CM72 - 72"
CM144 - 144"
CMLC(XX)
Custom Length
(Specify in Inches)

*MAXIMUM ONE PIECE STEM LENGTH IS 72". **MAXIMUM ONE PIECE STEM LENGTH IS 36". LONGER LENGTHS ARE POSSIBLE USING MULTIPLE STEMS AND COUPLERS.
**ORDER IN 12" INCREMENTS, ODD SIZES MAY BE FIELD CUT

EMERGENCY BATTERY OPTIONS

EMCR - LARGE DRIVER CANOPY FOR TOW EMERGENCY BATTERY
(FOR ROUND CEILING MOUNT TYPES)

Ø 9.0
3.25

REMOTE EMERGENCY BATTERY OPTIONS

EMRM* - 7W REMOTE EMERGENCY BATTERY
(50" MAX)

A	B	C
1.3	12.6	13.0

EMEN* - 7W REMOTE EMERGENCY BATTERY WITH ENCLOSURE
(50" MAX)

A	B	C
2.0	17.0	6.2

*OTHER EM BATTERY SIZES AVAILABLE, CONSULT FACTORY



COLOR OPTIONS - POWDER COAT PAINT FINISHES



STANDARD CORD / STEM / CANOPY FINISHES

FIXTURE COLOR	STANDARD CORD COLOR	STANDARD CANOPY / STEM COLOR
Matte White, Textured White	Matte White	Matte White
Gloss White	Matte White	Gloss White
Matte Black, Gloss Black, Textured Black	Matte Black	Matte Black
All Others	Matte Black	Same Color as Fixture
Custom Color	Contact Factory	Contact Factory

PAINT TIMES

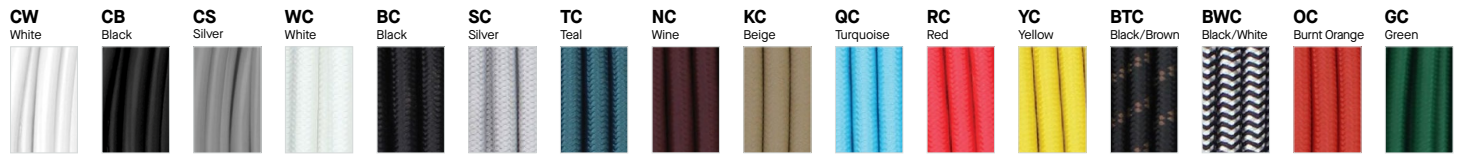
TIER	COST	PAINT TIME*
Tier 1 - Standard Finishes	\$	⌚
Tier 2 - Typical Finishes	\$\$	⌚⌚
Tier 3 - Special Metal Finishes	\$\$\$	⌚⌚⌚
Custom Color	Contact Factory	Contact Factory

*CONTACT FACTORY FOR SPECIFIC PRODUCT LEAD TIMES

CORD OPTIONS

STANDARD VINYL CORDS

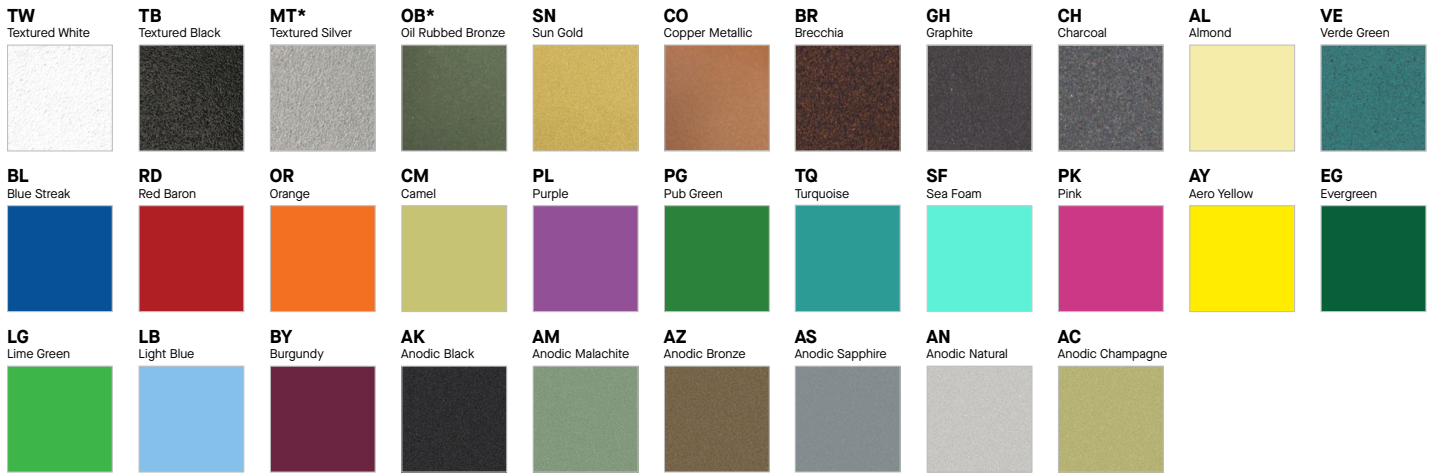
DECORATIVE BRAIDED COLOR CORDS



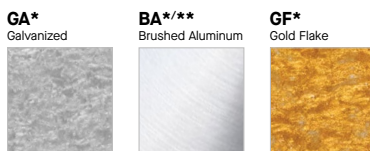
TIER 1 - STANDARD FINISHES



TIER 2 - TYPICAL FINISHES



TIER 3 - SPECIAL METAL FINISHES



CUSTOM COLOR FINISHES

CONTACT FACTORY

CC
Custom Color



*UNAVAILABLE FOR WET LOCATION

** UNAVAILABLE FOR INTERIOR

