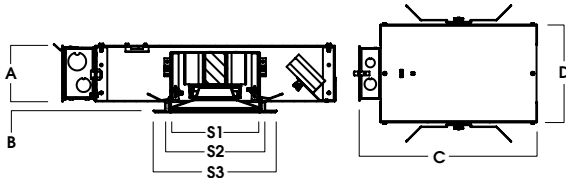
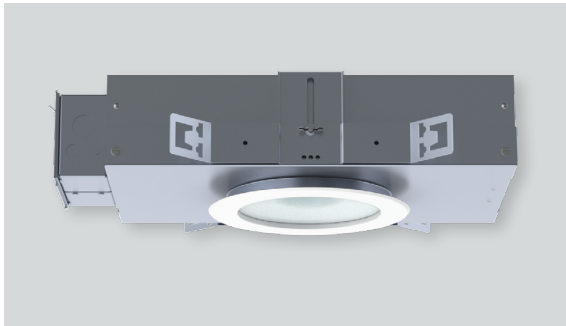
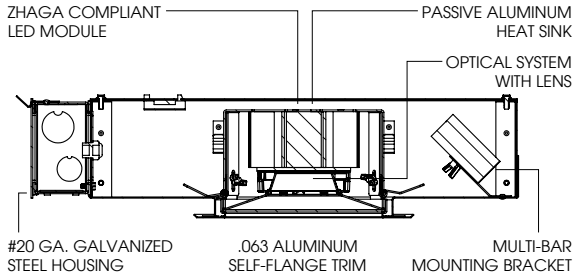


6" ROUND DOWNLIGHT IC RATED / SUPER SHALLOW OS SERIES / 1500 LUMENS MAX



A	B	C	D	S1	S2	S3
3.5	.625	17.17	9.5	5.5	6.3	7.7
88.9 mm	15.9 mm	436.1 mm	241.3 mm	139.7 mm	160.0 mm	195.6 mm

SGSI6OS - TRIM FLANGE / IC RATED

APPLICATION

6" recessed round super shallow open aperture downlight for general downlighting.

FEATURES

Fixture rated for direct contact with insulation. Under 3.5" deep super shallow fixture housing. Zhaga International Standard LED module for ease of maintenance and replacement. Tool-less LED module, driver and J-Box access. Multi-Bar mounting brackets. BH27 Standard mounting bars included. Posi-lock trim retention torsion springs. Integral 0.625" collar.

TRIM FINISH

A variety of architectural powdercoat and anodized finishes are available. Matte white flange is standard.

ELECTRONICS

LED module features high brightness white Osram LEDs. 3-step MacAdam Ellipse binning and CRI 84 minimum. Full range of electronic 120V/277V and dimming drivers.

CONSTRUCTION

Housing/frame constructed of #20 ga. galvanized steel to resist corrosion. Self-flanged one piece trim spun from 0.063" thick high purity aluminum and finished to specification. Passive machined aluminum heatsink.

CODE COMPLIANCE

BAA Compliant. IC rated. ETL certified to meet US and Canadian standards. Suitable for dry or damp locations. Optional Wet location. LM79/LM80/TM21 data available. Manufactured and tested to UL standards No. 1598/8750.

WATTAGE TO LUMENS UPDATE					
CURRENT PART NUMBER EXAMPLE	PREVIOUS PART NUMBER EXAMPLE	SOURCE LUMENS ¹	DELIVERED LUMENS ²	SYSTEM WATTS	LPW
SGSI6OS10L	SGSI6LEDOS10L	1100	849	11	81
SGSI6OS15L	SGSI6LEDOS15L	1500	1223	13	92

SERIES	LUMENS ¹	DRIVER / VOLTAGE ³	OPTIONS ⁴	TRIM	LUMENS ¹	CCT	FINISH	TRIM OPTIONS
SGSI6OS	10L 1100 Lm	E Electronic Driver DS10 10%, 0-10V DO10 1%, 0-10V DS2W1 1%, ELV/MLV, 120V	1 120V 2 277V BH27 ⁵ 27" Solid Bars H12 12" - 24" Expandable Bars H06 6" - 12" Expandable Bars CB24 24" C-Channel Bars FS Fusing EB Fixture Painted Black CCEA Chicago Ceiling Plenum Rated CR Corrosion Resistant PR ⁶ Deep Ceiling Extension GR Goof Ring ZIG ⁷ ZigBee Module BLU ⁷ Bluetooth LE EMRM ⁸ Remote EM Battery Pack AMB Anti-Microbial Finish	AR6221OS	10L 1100 Lm	27K 2700K 30K 3000K 35K 3500K 40K 4000K	MW ⁹ Matte White MB Matte Black PT Platinum Silver OB Oil Rubbed Bronze CH Charcoal AS Anodic Sapphire AC Anodic Champagne AM Anodic Malachite SN Sun Gold CO Copper Metallic GH Graphite CC ¹⁰ Custom Color	FO90 ¹¹ White Optical Acrylic GS Gasket WL Wet Location PF ¹² Polished Flange AMB Anti-Microbial Finish
	15L 1500 Lm				15L 1500 Lm			

EXAMPLE: SGSI6OS15LE1BH27/AR6221OS15L35KMWSO

NOTES:
1 Nominal Source Lumens at 35K 2 Nominal Delivered Lumens at 35K with MW-FO90 3 Contact Factory for Additional Options 4 See Product Options Page for Details 5 Standard Bar Hangers 6 Contact Factory
7 Order DS101/2 When Specifying ZIG or BLU 8 EM Will Not be Accessible Through Fixture 9 Standard Finish 10 Contact Factory for Special Finishes 11 Standard Lens 12 Flange and Reflector Same Finish



PROJECT: _____
TYPE: _____



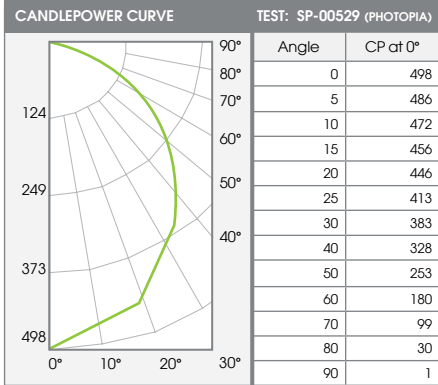
Dimensions and values shown are nominal. Spectrum Lighting continually works to improve products and reserves the right to make changes which may alter the performance or appearance of products.

PHOTOMETRIC DATA - 6" ROUND DOWNLIGHT IC RATED / SUPER SHALLOW

SGSI6LEDOS-15LE1-AR6221OS-15L35K-MWFO90

15L - 84 CRI

recessed
fixtures



ZONAL LUMENS

Beam Angle	Lumens	% of Total
0-10	46	4%
0-20	174	14%
0-30	364	30%
0-40	589	48%
0-60	1009	82%
0-80	1211	99%
0-90	1223	100%
Total Lumens	1223	100%

SINGLE UNIT: PERFORMANCE
INITIAL FOOTCANDLES AND BEAM ANGLE DIAMETERS

Mounting Height*	FC at Center	Diameter of Beam**	FC at Beam**
5.5'	16	13.5'	3
6.5'	12	15.9'	2
7.5'	9	18.4'	2
8.5'	7	20.8'	1
10.0'	5	24.5'	1
12.0'	3	29.4'	1
14.0'	3	34.3'	1
16.0'	2	39.2'	0

* From aperture to horizontal surface below.
** At IESNA defined Beam Angle, to 50% Max. CP.

Delivered Lumens: 1223
Luminaire Watts: 13.2
LER: 92

CP @ 0° (Nadir): 498
Beam Angle: 101.5°
CRI: 84

Spacing Ratio: 1.16
Output Multipliers: 10L x 0.52, 15L x 0.75

