



# 6" ROUND DOWNLIGHT

## NON-IC CONSTRUCTION

Spectrum's Infinium 6" recessed round kelvin and color tuning downlight series features a shallow plenum housing for general illumination.

LUMENS AND WATTAGE CHART		
PART NUMBER	SOURCE LUMENS <sup>1</sup>	SYSTEM WATTS
RDF06LU14L	1400	32

<sup>1</sup> Peak Source Lumens

PROJECT: \_\_\_\_\_  
 QUANTITY: \_\_\_\_\_ TYPE: \_\_\_\_\_



MATTE WHITE  
MATCHING FLANGE



MATTE BLACK  
MATCHING FLANGE



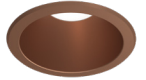
SEMI-DIFFUSE  
MATCHING FLANGE



PLATINUM SILVER  
MATCHING FLANGE

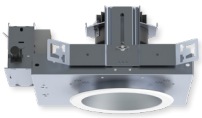


BRONZE  
MATCHING FLANGE

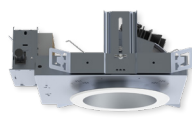


### AVAILABLE HOUSING TYPE

**RDF06LU** - Downlight



**RAF06LU** - Adjustable



### PRODUCT SELECTOR GUIDE

HOUSING					MOUNTING OPTIONS	TRIM OPTIONS				
SERIES	LUMENS	CCT / K	BEAM	CONTROL / VOLTAGE	BAR HANGERS	TRIM TYPE	FINISH	FLANGE FINISH	LENS	TRIM OPTIONS
	14L	80CMX		DMXLU1						

EXAMPLE

RDF06LU	14L	80CMX	MD	DMXLU1	BH27	RD6FLU	MW	MF	SO	
---------	-----	-------	----	--------	------	--------	----	----	----	--

HOUSING							MOUNTING OPTIONS			
SERIES	LUMENS <sup>1</sup>	CCT / K	BEAM	CONTROL / VOLTAGE	BAR HANGERS		BAR HANGERS			
Downlight	14L	1400 Lm	80CMX	16K-80K	ND	20°	DMXLU_	DMX Configuration	1 120V	
<b>RDF06LU</b>					MD	30°			2 277V	
Adjustable					WD	40°				
<b>RAF06LU</b>					XW	50°				
1 Peak Source Lumens					Single Unit Control Via Bluetooth The Hive Antenna, DMX System Required For Multi-Unit System					
							<b>BH27</b>	27" Solid Bars Standard Bar Hangers		
							<b>H12</b>	12" - 24" Expandable Bars		
							<b>CB24</b>	24" C-Channel Bars		

- Kelvin (16K-80K) and color (RGBW) tuning fixture.
- True saturated greens, blues and reds.
- Controllable with DMX or Bluetooth controls.
- Peak of 1400 source lumens.
- Smooth light distribution for general illumination.
- Shallow plenum construction.
- L70 at >60,000 Hours at 70% lumens maintenance.
- 5 year warranty on fixture and electronics.
- Sustainable fixture.
- Dry/damp or wet location rated.
- Ease of maintenance.
- Posi-lock trim retention torsion springs.

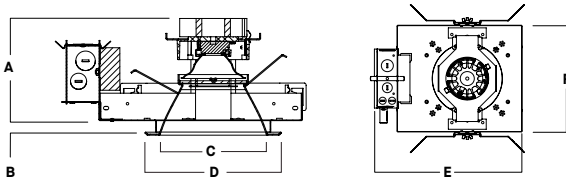
TRIM OPTIONS				
TRIM TYPE	FINISH	FLANGE FINISH	LENS	TRIM OPTIONS
Downlight	<b>MW</b> Matte White	<b>MF</b> Matching Flange	<b>SO</b> Micro Prism Solite™ Lens	<b>W</b> Wet Location Gasket is Supplied with "W" Option
<b>RD6FLU</b>	<b>MB</b> Matte Black	NON MATCHING		<b>GS</b> Gasket
	<b>SG</b> Semi-Diffuse	<b>WF</b> White Flange		
	<b>PT</b> Platinum Silver	<b>BF</b> Black Flange		
	<b>CC*</b> Custom Color *Consult Factory	<b>PF</b> Platinum Flange		
Adjustable		<b>CCF*</b> Custom Color Flange *Consult Factory		
<b>RA6FLU</b>				
See Page (x) for Full Range of Color Options (63-90176)		See Page (x) for Full Range of Color Options (63-90176)		



## HOUSING DIMENSIONS

### RDF06LU - NEW CONSTRUCTION / 14L MAX

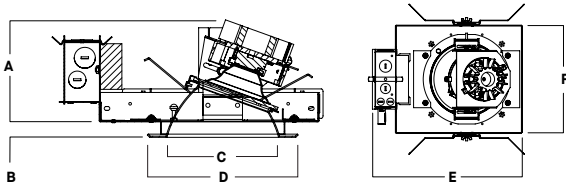
Non-IC rated, thermally protected frame-in kit for new construction.



A	B	C	D	E	F
6.3	.625	6.0	7.5	14.7	9.5
160.0 mm	15.2 mm	152.4 mm	191.0 mm	373.4 mm	241.3 mm

### RAF06LU - NEW CONSTRUCTION / 14L MAX

Non-IC rated, thermally protected frame-in kit for new construction.



A	B	C	D	E	F
6.1	.625	6.0	7.5	14.7	9.5
154.9 mm	15.2 mm	152.4 mm	191.0 mm	373.4 mm	241.3 mm

## TRIM DATA

### RD6FLU - DOWNLIGHT



### RA6FLU - ADJUSTABLE



## FEATURES

### APPLICATIONS

6" Round LU downlight platform with Tunable color (HUE) system. System can be programmed for scenes or set for manual control. Adjusts to over 300,000 colors as well as 1650K-8000K white light.

### FEATURES

Two-stage optical system for smooth light distribution and focus control. Quick change LED module with interchangeable optics for job site adjustment and fixture maintenance. Shallow plenum design. Tool-less driver and j-box access. Posi-lock trim retention torsion springs. Integral 5/8" (.625) collar, works in ceiling up to 1" Deep.

### FINISH

Variety of powdercoat and anodized finishes available. Matte white flange is standard.

### ELECTRONICS

LED system features LED module with proprietary Tunable color (HUE) technology that provides consistent, stable color with CCT control of +/- 100K over life of the light engine. Base CRI is 90 with <2 MacAdam Ellipse binning. Variety of dimming controls (by Others). The Hive Antenna is the main control app., and is available for both Apple and Android devices.

### CONSTRUCTION

Housing/frame constructed of #20 ga. galvanized steel to resist corrosion. Self-flanged one piece trim spun from 0.063" thick high purity aluminum and finished to specification.

### CODE COMPLIANCE

BAA Compliant. Non-IC rated. ETL certified to meet US and Canadian standards. Suitable for dry or damp locations. Optional Wet location. Manufactured and tested to UL standards No. 1598/8750.



Spectrum Lighting

# SPUN TRIM AND FLANGE FINISH OPTIONS - RECESSED ROUND



SPECTRUM LIGHTING RUNS A STATE OF THE ART POWDER COAT PROCESS WITH A FIVE STAGE CHROMATE PRETREAT AND MULTI STAGE OVEN. THREE BOOTHS ARE FED SO WE ARE ABLE TO RUN MULTIPLE COLORS ON ANY GIVEN DAY. SPECTRUM ALSO HAS A CUSTOM "WET" BOOTH FOR SPECIAL AIR-DRY FINISHES AND PAINTS.

Please note that no printed image can equal the exact color of finish on metal.

## PAINT TIMES

TIER	COST	PAINT TIME*
Tier 1 - Standard Finishes	\$	⓪
Tier 2 - Typical Finishes	\$	⓪⓪
Tier 3 - Anodic Finishes	\$\$	⓪⓪⓪
Tier 4 - Alzak Finishes	\$\$\$	⓪⓪⓪⓪
Custom Color	Contact Factory	Contact Factory

\*CONTACT FACTORY FOR SPECIFIC PRODUCT LEAD TIMES

## FLANGE OPTIONS

### WF

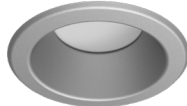
White Flange



FOR USE WITH NON-MATTE WHITE TRIM FINISH

### MF

Matching Flange



### BF

Black Flange



FOR USE WITH NON-MATTE BLACK TRIM FINISH

### SF

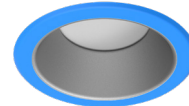
Platinum Flange



FOR USE WITH NON-PLATINUM TRIM FINISH

### CCF\*

Custom Color Flange



\*CONTACT FACTORY

## POWDER COAT PAINT FINISHES

### TIER 1

#### MW

Matte White



#### MB

Matte Black



#### PT

Platinum Silver



#### SG\*\*

Semi-Diffuse

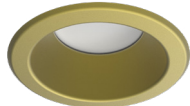


\*\*ANODIZED FINISH

### TIER 2

#### SN

Sun Gold



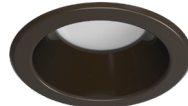
#### BZ

Bronze



#### OB

Oil Rubbed Bronze



#### CH

Charcoal



#### CO

Copper Metallic



#### GH

Graphite



### TIER 3

#### AS

Anodic Sapphire



#### AN

Anodic Natural



#### AC

Anodic Champagne



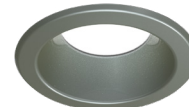
#### AZ

Anodic Bronze



#### AM

Anodic Malachite



#### AK

Anodic Black



## ANODIZED ALZAK FINISHES

### TIER 4

#### CL

Bright Clear



#### HZ

Haze Full Diffuse



#### WE

Rose Gold



#### GO

Gold Alzak Semi-Diffuse



#### PW

Pewter Semi-Diffuse



### CC\*

Custom Color



\*CONTACT FACTORY

### AMB\*\*\*

Anti Microbial



\*\*\*WHITE FINISH ONLY

