



COMMERCIAL DOWNLIGHT SERIES BY SPECTRUM

9" ROUND DOWNLIGHT

NON-IC CONSTRUCTION

Spectrum's Infinium 9" recessed round downlight series features a shallow plenum housing for general illumination.

LUMENS AND WATTAGE CHART			
PART NUMBER	DELIVERED LUMENS ¹	SYSTEM WATTS	LPW
SGE9LEDFX10L	777	6.6	118
SGE9LEDFX15L	1252	10.5	119
SGE9LEDFX20L	1684	14.4	117
SGE9LEDFX30L	2504	21.9	114
SGE9LEDFX40L	3368	30	112
SGE9LEDFX50L	4318	38.6	112

¹ Nominal Delivered Lumens at 35K with MW SO



PROJECT: _____
 QUANTITY: _____ TYPE: _____

MATTE WHITE
MATCHING FLANGE



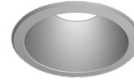
MATTE BLACK
MATCHING FLANGE



SEMI-DIFFUSE
MATCHING FLANGE



PLATINUM SILVER
MATCHING FLANGE

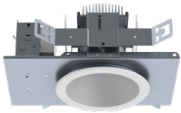


BRONZE
MATCHING FLANGE



AVAILABLE HOUSING TYPE

SGE9LEDFX - New Construction



PRODUCT SELECTOR GUIDE

SERIES	LUMENS	CRI / CCT	DRIVER / VOLTAGE	EMERGENCY	BAR HANGERS	TRIM TYPE	FINISH	FLANGE FINISH	LENS	TRIM OPTIONS
SGE9LEDFX						AR9223FX				
EXAMPLE										
SGE9LEDFX	15L	35K	DX		BH27	AR9223FX	MW	MF	SO	

FIXTURE HOUSING SPECIFICATION

SERIES	LUMENS	CRI / CCT	DRIVER / VOLTAGE	EMERGENCY	BAR HANGERS	
SGE9LEDFX	10L 800 Lm	90 Minimum	DX 1%, 0-10V, 120V/277V	EM Integral Emergency Battery	BH27 27" Solid Bars Standard Bar Hangers H12 12" - 24" Expandable Bars CB24 24" C-Channel Bars	
	15L 1250 Lm	27HK 2700K	DS2W1 1%, ELV/MLV, 120V	EMRM Remote Emergency Battery Pack Installer Responsible For EM Access		
	20L 1700 Lm	30HK 3000K				
	30L 2500 Lm	35HK 3500K				
	40L 3350 Lm	40HK 4000K				
	50L 4300 Lm	80 Minimum				
	Nominal Delivered Lumens at 35K with MW SO		30K 3000K			
		35K 3500K				
		40K 4000K				
		50K 5000K				

- Up to 4300 delivered lumens.
- Smooth light distribution for general illumination.
- Shallow plenum construction.
- L70 at >60,000 Hours at 70% lumens maintenance.
- 5 year warranty on fixture and electronics.
- Sustainable fixture.
- Damp or wet location listed.
- Ease of maintenance.
- Posi-lock trim retention torsion springs.

TRIM SPECIFICATION

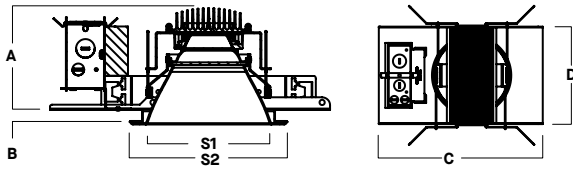
TRIM TYPE	FINISH	FLANGE FINISH	LENS	TRIM OPTIONS
AR9223FX	MW Matte White	MF Matching Flange	STANDARD LENS FOR DOWNLIGHT SO Micro Prism Solite™ Lens	W Wet Location Gasket is Supplied with "W" Option GS Gasket
	MB Matte Black	NON MATCHING		
	SG Semi-Diffuse	WF White Flange		
	PT Platinum Silver	BF Black Flange		
	CC* Custom Color *Consult Factory	SF Platinum Flange		
	CCF* Custom Color Flange *Consult Factory			
See Page 4 for Full Range of Color Options (83-9078)		See Page 4 for Full Range of Color Options (83-9078)		



HOUSING DIMENSIONS

SGE9LEDFX - NEW CONSTRUCTION

Non-IC rated, thermally protected frame-in kit for new construction.



A	B	C	D	S1	S2
4.5	.625	14.0	10.5	8.5	10.1
114.3 mm	15.9 mm	355.6 mm	266.7 mm	215.9 mm	256.5 mm

Hole Cutout: Ø 9.375"

TRIM DATA

AR9223FX - DOWNLIGHT



FEATURES

APPLICATIONS

FX series 9" diameter downlights, designed for general downlighting with smooth light distribution.

FEATURES

Shallow plenum construction. Companion retrofit and remodel fixtures available. Auto dim thermal protector for long term reliability. Zhaga international standard LED module for ease of maintenance and future replacement. Tool-less LED module, driver, and J-Box access. Multi-Bar mounting brackets, fit a variety of mounting bars. Posi-lock trim retention torsion springs. Integral 5/8" (.625) collar, works in ceiling up to 1" Deep. Intended for Non-IC new construction.

FINISH

Variety of powdercoat and anodized finishes available. Matte white flange is standard.

ELECTRONICS

LED system features high efficacy Philips LEDs. Standard CRI is >80. Drivers are overload and short circuit protected as well as thermally regulated. Sound rating A.

CONSTRUCTION

Housing/frame constructed of #20 ga. galvanized steel to resist corrosion. Self-flanged one piece trim spun from 0.063 3002 high purity aluminum and finished to specification. Passive machined aluminum heatsink.

CODE COMPLIANCE

BAA Compliant. Non-IC New Construction only. ETL certified to meet US and Canadian standards. Suitable for dry or damp locations. Optional Wet location listed trim. LM79/LM80 data available. Manufactured and tested to UL standards No. 1598.

RATED LIFE

Rated for 60,000 Hours at 70% lumen maintenance. (L70)



PHOTOMETRIC DATA - 9" ROUND DOWNLIGHT

SGE9LEDFX 50L 35K XX AR9223FX MW WF SO

CANDLEPOWER CURVE TEST SP-01245	INTENSITY CANDELA 0° AZIMUTH	ZONAL LUMENS	SINGLE UNIT: PERFORMANCE DIRECT FOOTCANDLES BASED ON DOWNLIGHT ONLY				MULTIPLE UNITS: PERFORMANCE 80/50/20% REFLECTANCES INITIAL FOOTCANDLES AND WATTS PER SQUARE FOOT							
			Mounting Height AFF	FC at Center on Floor	Beam Diameter	FC at Beam Edge	Ceiling Height	Fixture Spacing	RCR 2		RCR 4			
	0°	0° - 10°	275	6%	8'	45 fc	12.3'	11 fc	10'	8'	74	0.68	40	0.44
	0°	0° - 20°	1035	24%	10'	29 fc	15.4'	7 fc	12'	10'	46	0.43	25	0.27
	5°	0° - 30°	2101	49%	12'	20 fc	18.5'	5 fc	16'	12'	33	0.30	28	0.30
	15°	0° - 40°	3121	72%	14'	15 fc	21.6'	4 fc	Delivered Illuminance Rating: (DIR)		108 FC per W/Sq. Ft.		91 FC per W/Sq. Ft.	
	25°	0° - 60°	4140	96%	16'	11 fc	24.7'	3 fc	Recessed mounting Square rooms used for multiple units: RCR 2: Length & Width = Ceiling Ht. - 2.5' x 5.00 RCR 4: Length & Width = Ceiling Ht. - 2.5' x 2.50 * Average Footcandles at 2.5' Above Floor					
	35°	0° - 80°	4298	100%	20'	7 fc	30.9'	2 fc						
	45°	0° - 90°	4305	100%	24'	5 fc	37.0'	1 fc						
	55°	Total	4318	100%	28'	4 fc	43.2'	1 fc						
	90°													

Delivered Lumens: 4318
Luminaire Watts: 38.48
LER: 112.21

CP at 0° (Nadir): 2867
CRI: 80+

Beam Angle: 75°
Spacing Ratio: 1.09

Lumen Multiplier: 10L x 0.18, 15L x 0.29, 20L x 0.39, 30L x 0.58, 40L x 0.78
CCT Multiplier: 27HK x 0.77, 30K x 0.96, 40K x 1.03, 50K x 1.04

See Page 1 for System Watts for all outputs

SGE9LEDFX 50L 35K XX AR9223FX SG WF SO

CANDLEPOWER CURVE TEST SP-01245_1	INTENSITY CANDELA 0° AZIMUTH	ZONAL LUMENS	SINGLE UNIT: PERFORMANCE DIRECT FOOTCANDLES BASED ON DOWNLIGHT ONLY				MULTIPLE UNITS: PERFORMANCE 80/50/20% REFLECTANCES INITIAL FOOTCANDLES AND WATTS PER SQUARE FOOT							
			Mounting Height AFF	FC at Center on Floor	Beam Diameter	FC at Beam Edge	Ceiling Height	Fixture Spacing	RCR 2		RCR 4			
	0°	0° - 10°	280	7%	8'	46 fc	11.5'	12 fc	12'	8'	61	0.62	52	0.62
	0°	0° - 20°	1052	27%	10'	29 fc	14.4'	8 fc	16'	10'	41	0.42	26	0.30
	5°	0° - 30°	2099	53%	12'	20 fc	17.2'	5 fc	20'	12'	25	0.25	15	0.18
	15°	0° - 40°	3042	77%	14'	15 fc	20.1'	4 fc	Delivered Illuminance Rating: (DIR)		100 FC per W/Sq. Ft.		85 FC per W/Sq. Ft.	
	25°	0° - 60°	3854	98%	16'	11 fc	23.0'	3 fc	Recessed mounting Square rooms used for multiple units: RCR 2: Length & Width = Ceiling Ht. - 2.5' x 5.00 RCR 4: Length & Width = Ceiling Ht. - 2.5' x 2.50 * Average Footcandles at 2.5' Above Floor					
	35°	0° - 80°	3921	100%	20'	7 fc	28.7'	2 fc						
	45°	0° - 90°	3923	100%	24'	5 fc	34.5'	1 fc						
	55°	Total	3934	100%	28'	4 fc	40.2'	1 fc						
	90°													

Delivered Lumens: 3934
Luminaire Watts: 38.59
LER: 101.94

CP at 0° (Nadir): 2921
CRI: 80+

Beam Angle: 71°
Spacing Ratio: 1.04

Lumen Multiplier: 10L x 0.18, 15L x 0.29, 20L x 0.39, 30L x 0.58, 40L x 0.78
CCT Multiplier: 27HK x 0.77, 30K x 0.96, 40K x 1.03, 50K x 1.04

See Page 1 for System Watts for all outputs



SPUN TRIM AND FLANGE FINISH OPTIONS - RECESSED ROUND



SPECTRUM LIGHTING RUNS A STATE OF THE ART POWDER COAT PROCESS WITH A FIVE STAGE CHROMATE PRETREAT AND MULTI STAGE OVEN. THREE BOOTHS ARE FED SO WE ARE ABLE TO RUN MULTIPLE COLORS ON ANY GIVEN DAY. SPECTRUM ALSO HAS A CUSTOM "WET" BOOTH FOR SPECIAL AIR-DRY FINISHES AND PAINTS.

Please note that no printed image can equal the exact color of finish on metal.

PAINT TIMES

TIER	COST	PAINT TIME*
Tier 1 - Standard Finishes	\$	⓪
Tier 2 - Typical Finishes	\$	⓪⓪
Tier 3 - Anodic Finishes	\$\$	⓪⓪⓪
Tier 4 - Alzak Finishes	\$\$\$	⓪⓪⓪⓪
Custom Color	Contact Factory	Contact Factory

*CONTACT FACTORY FOR SPECIFIC PRODUCT LEAD TIMES

FLANGE OPTIONS

WF

White Flange



FOR USE WITH NON-MATTE WHITE TRIM FINISH

MF

Matching Flange



BF

Black Flange



FOR USE WITH NON-MATTE BLACK TRIM FINISH

SF

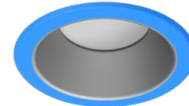
Platinum Flange



FOR USE WITH NON-PLATINUM TRIM FINISH

CCF*

Custom Color Flange



*CONTACT FACTORY

POWDER COAT PAINT FINISHES

TIER 1

MW

Matte White



MB

Matte Black



PT

Platinum Silver



SG**

Semi-Diffuse

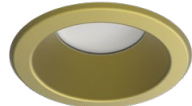


**ANODIZED FINISH

TIER 2

SN

Sun Gold



BZ

Bronze



OB

Oil Rubbed Bronze



CH

Charcoal



CO

Copper Metallic



GH

Graphite



TIER 3

AS

Anodic Sapphire



AN

Anodic Natural



AC

Anodic Champagne



AZ

Anodic Bronze



AM

Anodic Malachite



AK

Anodic Black



ANODIZED ALZAK FINISHES

TIER 4

CL

Bright Clear



HZ

Haze Full Diffuse



WE

Rose Gold



GO

Gold Alzak Semi-Diffuse



PW

Pewter Semi-Diffuse



CC*

Custom Color



*CONTACT FACTORY

AMB***

Anti Microbial



***WHITE FINISH ONLY

