



COMMERCIAL DOWNLIGHT SERIES BY SPECTRUM

4"-14" ROUND DOWNLIGHT REMODEL SERIES

Spectrum's Infinium 4"-14" remodel round downlight series features a shallow plenum housing for general illumination.

LUMENS AND WATTAGE CHART			
PART NUMBER	DELIVERED LUMENS ¹	SYSTEM WATTS	LPW
SGRTE6FX10L	746	6.6	113
SGRTE6FX15L	1160	10.5	110
SGRTE6FX20L	1574	14.4	109
SGRTE6FX30L	2361	21.9	108
SGRTE6FX40L ^{2/3}	3188	30	106
SGRTE6FX50L ³	4056	38.3	106

¹ Nominal Delivered Lumens at 35K with MW SO
² 40L Marked Spacing Only Required for 90 CRI
³ Install Fixtures in Accordance with the Following Marked Spacing: (a) Center To Center of Adjacent Luminaires: 600mm (24in); (b) Top of Luminaire to overhead Building Member: 24.5mm (1in); (c) Luminaire Center to side Building member: 300mm (12in)

PROJECT: _____
 QUANTITY: _____ TYPE: _____



MATTE WHITE
MATCHING FLANGE



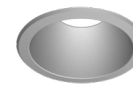
MATTE BLACK
MATCHING FLANGE



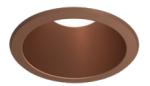
SEMI-DIFFUSE
MATCHING FLANGE



PLATINUM SILVER
MATCHING FLANGE

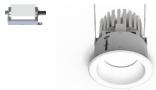


BRONZE
MATCHING FLANGE

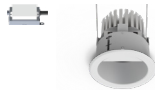


AVAILABLE HOUSING TYPES

SGRTE-FX - Downlight



SGRTW-FX - Wall Wash



PRODUCT SELECTOR GUIDE

SERIES	LUMENS	CRI / CCT	DRIVER / VOLTAGE	EMERGENCY	TRIM TYPE	FINISH	FLANGE FINISH	LENS	TRIM OPTIONS
SGRTE6FX					AR6223FX				
EXAMPLE									
SGRTE6FX	15L	35K	DS2W1		AR6223FX	MW	MF	SO	

FIXTURE HOUSING SPECIFICATION

SERIES	LUMENS ¹	CRI / CCT	DRIVER / VOLTAGE	EMERGENCY
Downlight	10L 750 Lm	90 Minimum	DX 1%, 0-10V, 120V/277V	EM Integral Emergency Battery
SGRTE4FX	15L 1150 Lm	27HK 2700K	DS2W1 1%, ELV/MLV, 120V	EMRM Remote Emergency Battery Pack Installer Responsible For EM Access
SGRTE5FX	20L 1600 Lm	30HK 3000K		
SGRTE6FX	30L 2350 Lm	35HK 3500K		
SGRTE7FX	40L^{2/3} 3200 Lm	40HK 4000K		
SGRTE8FX	50L^{3/4} 4050 Lm			
SGRTE9FX		80 Minimum		
SGRTE10FX		30K 3000K		
SGRTE12FX		35K 3500K		
SGRTE14FX		40K 4000K		
Wall Wash		50K 5000K		
SGRTW4FX				
SGRTW5FX				
SGRTW6FX				
SGRTW8FX				

¹ Nominal Delivered Lumens at 35K with MW SO
² 40L Marked Spacing Only Required for 90 CRI
³ Install Fixtures in Accordance with the Following Marked Spacing: (a) Center To Center of Adjacent Luminaires: 600mm (24in); (b) Top of Luminaire to overhead Building Member: 24.5mm (1in); (c) Luminaire Center to side Building member: 300mm (12in)
⁴ 50L Not Available in 90 CRI

- Up to 4000 delivered lumens.
- Smooth light distribution for general illumination.
- Shallow plenum construction.
- L70 at >60,000 Hours at 70% lumens maintenance.
- Quick Ship options available.
- 5 year warranty on fixture and electronics.
- Sustainable fixture.
- Damp or wet location listed.
- Ease of maintenance.
- Posi-lock trim retention torsion springs.

TRIM SPECIFICATION

TRIM TYPE	FINISH	FLANGE FINISH	LENS	TRIM OPTIONS
Downlight	MW Matte White	MF Matching Flange	STANDARD LENS FOR DOWNLIGHT	W Wet Location Gasket is Supplied with "W" Option
AR4223FX	MB Matte Black		SO Micro Prism Solite™ Lens	GS Gasket
AR5223FX	SG Semi-Diffuse	NON MATCHING		
AR6223FX	PT Platinum Silver			
AR7223FX	CC* Custom Color *Consult Factory	WF White Flange		
AR8223FX		BF Black Flange		
AR9223FX		SF Platinum Flange		
AR1023FX		CCF* Custom Color Flange *Consult Factory		
AR1223FX				
AR1423FX				
Wall Wash			STANDARD LENS FOR WALL WASH	
AR4923FX	See Page 6 for Full Range of Color Options (83-90178)	See Page 6 for Full Range of Color Options (83-90178)	SK Skytex™ Lens	
AR5923FX				
AR6923FX				
AR8923FX				

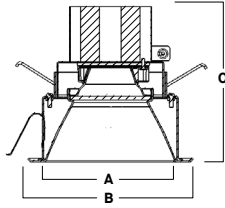
GREEN TEXT INDICATES QUICK SHIP OPTIONS



HOUSING DIMENSIONS

SGRTE-FX - 4"-14" REMODEL CONSTRUCTION / 50L MAX

Non-IC rated frame-in kit for existing construction. Non-IC designation requires insulation must be minimum of 3" from housing.



FIT SIZE

SERIES	4"	5"	6"	7"	8"	9"	10"	12"	14"
MINIMUM	4 ^{13/16}	5 ^{1/8}	6 ^{3/16}	6 ^{7/8}	7 ^{7/8}	8 ^{3/4}	9 ^{3/4}	11 ^{3/4}	13 ^{7/8}
MAXIMUM	4 ^{7/8}	5 ^{5/8}	6 ^{7/8}	7 ^{3/8}	8 ^{3/8}	9 ^{3/8}	10 ^{1/2}	12 ^{3/8}	14 ^{5/8}

SERIES	A	B	C
SGRTE4FX	4.0	5.4	6.2
SGRTE5FX	4.9	6.3	6.4
SGRTE6FX	5.8	7.5	6.95
SGRTE7FX	6.5	8.5	6.95
SGRTE8FX	7.5	9.1	6.95
SGRTE9FX	8.5	10.1	6.95
SGRTE10FX	9.5	11.3	6.95
SGRTE12FX	11.5	13.1	6.95
SGRTE14FX	13.6	15.4	7.45

TRIM DATA

AR6223FX - DOWNLIGHT



AR6923FX - WALL WASH



PRODUCT FEATURES

QUICK SHIP

Quick Ship highlights products that can ship in 3 - 5 working days.

APPLICATIONS

Spectrum's Infinium 4"-14" remodel round downlight/wall wash series, designed for general downlighting with smooth light distribution.

FEATURES

One piece spun housing seals ceiling aperture preventing light leaks. Auto dim thermal protector for long term reliability. Zhaga international standard LED module for ease of maintenance and future replacement. Tool-less LED module, driver, and J-Box access. Posi-lock trim retention torsion springs. Integral 5/8" (.625) collar, works in ceiling up to 1" Deep. Intended for Non-IC retrofit construction.

REMODEL

Features tethered power supply and junction box with sheathed wire.

FINISH

Variety of powdercoat and anodized finishes available. Matte white flange is standard.

ELECTRONICS

LED system features high efficacy Philips LEDs. Standard CRI is >80. Drivers are overload and short circuit protected as well as thermally regulated. Sound rating A.

CONSTRUCTION

Housing/frame constructed of #20 ga. galvanized steel to resist corrosion. Self-flanged one piece trim spun from 0.063 3002 high purity aluminum and finished to specification. Passive machined aluminum heatsink.

CODE COMPLIANCE

BAA Compliant. Non-IC Rated. ETL certified to meet US and Canadian standards. Suitable for dry or damp locations. Optional Wet location listed trim. LM79/LM80 data available. Manufactured and tested to UL standards No. 1598.

RATED LIFE

Rated for 60,000 Hours at 70% lumen maintenance. (L70)



PHOTOMETRIC DATA - 4"-14" ROUND DOWNLIGHT

SGRTE6FX 50L 35K XX AR6223FX MW WF SO

CANDLEPOWER CURVE TEST SP-01231	INTENSITY CANDELA 0° AZIMUTH	ZONAL LUMENS	SINGLE UNIT: PERFORMANCE DIRECT FOOTCANDLES BASED ON DOWNLIGHT ONLY				MULTIPLE UNITS: PERFORMANCE 80/50/20% REFLECTANCES INITIAL FOOTCANDLES AND WATTS PER SQUARE FOOT					
			Mounting Height AFF	FC at Center on Floor	Beam Diameter	FC at Beam Edge	Ceiling Height	Fixture Spacing	RCR 2		RCR 4	
	0°	0° - 10° 297 7%	8'	48 fc	10.7'	14 fc	10'	8"	70	0.68	38	0.44
	0°	0° - 20° 1123 28%	10'	31 fc	13.4'	9 fc	12'	10"	44	0.43	24	0.27
	5°	0° - 30° 2247 55%	12'	21 fc	16.1'	6 fc	16'	12'	31	0.30	26	0.30
	15°	0° - 40° 3151 78%	14'	16 fc	18.7'	4 fc	Delivered Illuminance Rating: (DIR)					
	25°	0° - 60° 3840 95%	16'	12 fc	21.4'	3 fc	102 FC per W/Sq. Ft.		87 FC per W/Sq. Ft.			
	35°	0° - 80° 4037 100%	20'	8 fc	26.8'	2 fc	Recessed mounting Square rooms used for multiple units: RCR 2: Length & Width = Ceiling Ht. - 2.5' x 5.00 RCR 4: Length & Width = Ceiling Ht. - 2.5' x 2.50					
	45°	0° - 90° 4056 100%	24'	5 fc	32.1'	2 fc	* Average Footcandles at 2.5' Above Floor * Exceeds Spacing Ratio by 3%					
	55°	247	28'	4 fc	37.5'	1 fc	** Exceeds Spacing Ratio by 1%					
	90°	3	Total 4056 100%									

Delivered Lumens: 4056
Luminaire Watts: 38.4
LER: 105.63

CP at 0° (Nadir): 3080
CRI: 80+

Beam Angle: 69°
Spacing Ratio: 1.04

Lumen Multiplier: 10L x 0.18, 15L x 0.29, 20L x 0.39, 30L x 0.58, 40L x 0.78
CCT Multiplier: 27HK x 0.77, 30K x 0.96, 40K x 1.03, 50K x 1.04

SGRTE6FX 50L 35K XX AR6223FX SG WF SO

CANDLEPOWER CURVE TEST SP-01231_1	INTENSITY CANDELA 0° AZIMUTH	ZONAL LUMENS	SINGLE UNIT: PERFORMANCE DIRECT FOOTCANDLES BASED ON DOWNLIGHT ONLY				MULTIPLE UNITS: PERFORMANCE 80/50/20% REFLECTANCES INITIAL FOOTCANDLES AND WATTS PER SQUARE FOOT						
			Mounting Height AFF	FC at Center on Floor	Beam Diameter	FC at Beam Edge	Ceiling Height	Fixture Spacing	RCR 2		RCR 4		
	0°	0° - 10° 440 11%	8'	74 fc	8.3'	25 fc	12'	8'	63	0.61	55	0.61	
	0°	0° - 20° 1520 39%	10'	47 fc	10.4'	16 fc	16'	10'	42	0.41	27	0.30	
	5°	0° - 30° 2736 70%	12'	33 fc	12.4'	11 fc	20'	12'	25	0.25	29	0.32	
	15°	0° - 40° 3535 91%	14'	24 fc	14.5'	8 fc	Delivered Illuminance Rating: (DIR)						
	25°	0° - 60° 3889 100%	16'	19 fc	16.6'	6 fc	102 FC per W/Sq. Ft.		90 FC per W/Sq. Ft.				
	35°	0° - 80° 3899 100%	20'	12 fc	20.7'	4 fc	Recessed mounting Square rooms used for multiple units: RCR 2: Length & Width = Ceiling Ht. - 2.5' x 5.00 RCR 4: Length & Width = Ceiling Ht. - 2.5' x 2.50						
	45°	409	0° - 90° 3901 100%	24'	8 fc	24.9'	3 fc	* Average Footcandles at 2.5' Above Floor					
	55°	92	28'	6 fc	29.0'	2 fc							
	90°	2	Total 3901 100%										

Delivered Lumens: 3901
Luminaire Watts: 38.4
LER: 101.59

CP at 0° (Nadir): 4746
CRI: 80+

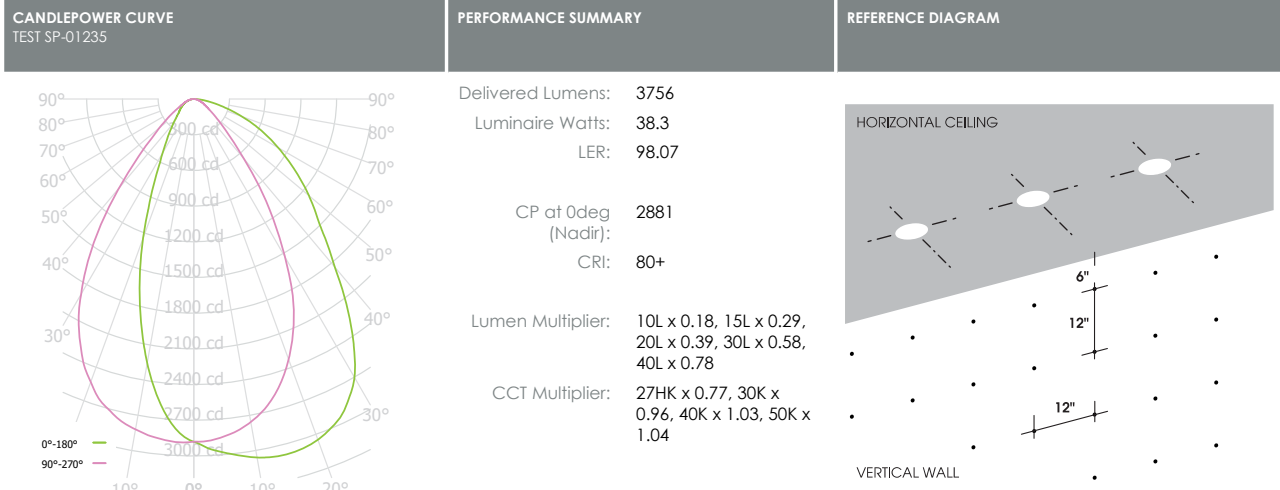
Beam Angle: 55°
Spacing Ratio: 0.86

Lumen Multiplier: 10L x 0.18, 15L x 0.29, 20L x 0.39, 30L x 0.58, 40L x 0.78
CCT Multiplier: 27HK x 0.77, 30K x 0.96, 40K x 1.03, 50K x 1.04

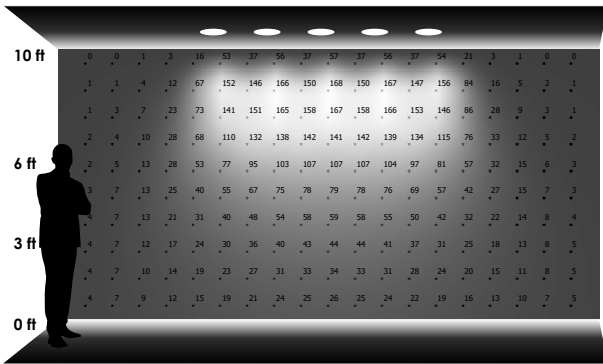


PHOTOMETRIC DATA - 4"-14" ROUND DOWNLIGHT

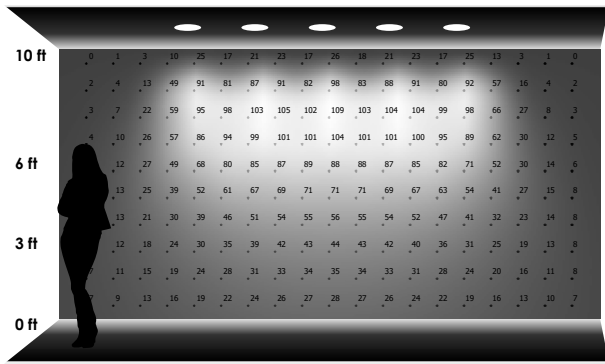
SGRTW6FX 50L 35K XX AR6923FX MW WF SK



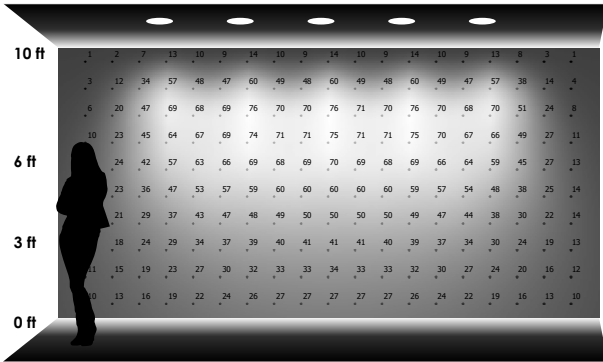
PERFORMANCE DATA - INITIAL ILLUMINATION (FOOTCANDLES) ON WALL - DIRECT LIGHT ONLY



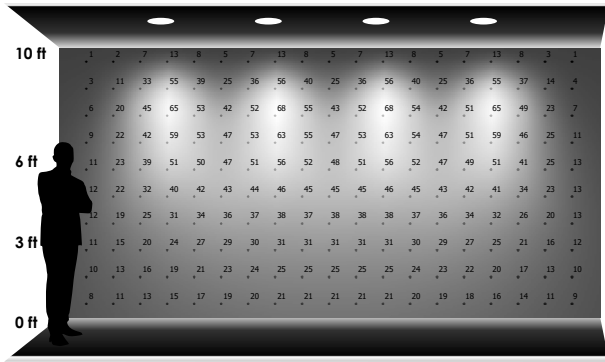
5 LUMINAIRES
2'-0" away from wall
2'-0" between luminaires



5 LUMINAIRES
2'-6" away from wall
2'-6" between luminaires



5 LUMINAIRES
3'-0" away from wall
3'-0" between luminaires



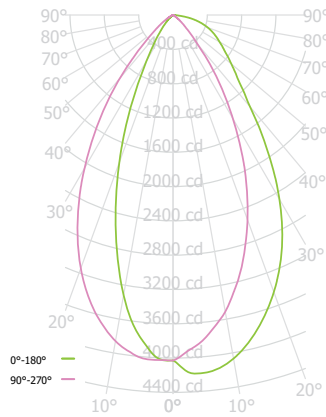
4 LUMINAIRES
3'-0" away from wall
4'-0" between luminaires



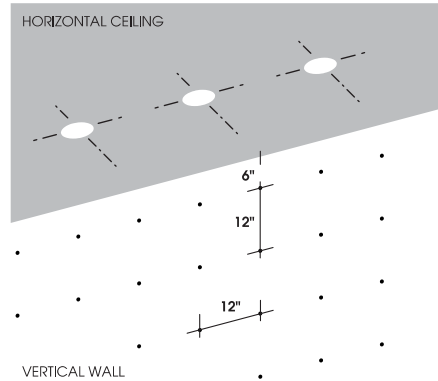
PHOTOMETRIC DATA - 4"-14" ROUND WALL WASH

SGRTW6FX 50L 35K XX AR6923FX SG WF SK

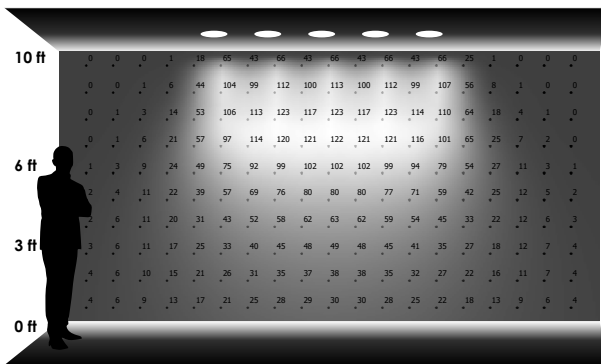
CANDLEPOWER CURVE TEST SP-01235_1	PERFORMANCE SUMMARY	REFERENCE DIAGRAM
--------------------------------------	---------------------	-------------------



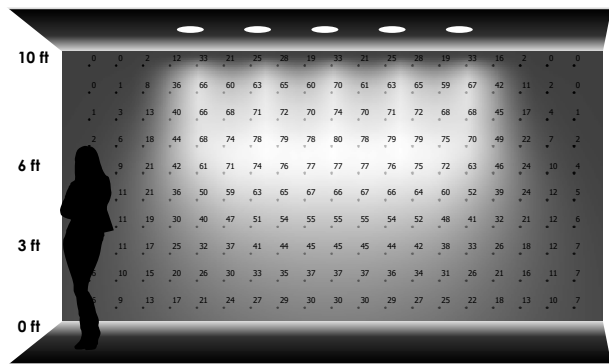
Delivered Lumens: 3678
 Luminaire Watts: 38.3
 LER: 96.03
 CP at 0deg (Nadir): 4028
 CRI: 80+
 Lumen Multiplier: 10L x 0.18, 15L x 0.29, 20L x 0.39, 30L x 0.58, 40L x 0.78
 CCT Multiplier: 27HK x 0.77, 30K x 0.96, 40K x 1.03, 50K x 1.04



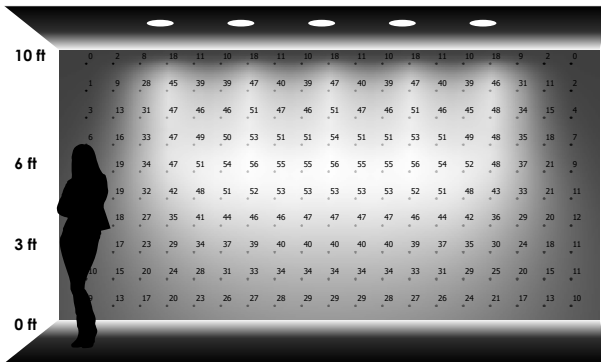
PERFORMANCE DATA - INITIAL ILLUMINATION (FOOTCANDLES) ON WALL - DIRECT LIGHT ONLY



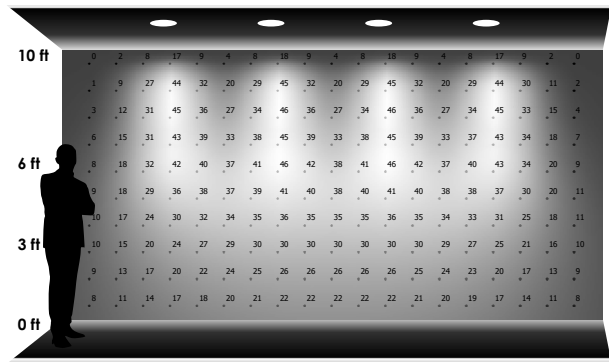
5 LUMINAIRES
 2'-0" away from wall
 2'-0" between luminaires



5 LUMINAIRES
 2'-6" away from wall
 2'-6" between luminaires



5 LUMINAIRES
 3'-0" away from wall
 3'-0" between luminaires



4 LUMINAIRES
 3'-0" away from wall
 4'-0" between luminaires



SPUN TRIM AND FLANGE FINISH OPTIONS - RECESSED ROUND



SPECTRUM LIGHTING RUNS A STATE OF THE ART POWDER COAT PROCESS WITH A FIVE STAGE CHROMATE PRETREAT AND MULTI STAGE OVEN. THREE BOOTHS ARE FED SO WE ARE ABLE TO RUN MULTIPLE COLORS ON ANY GIVEN DAY. SPECTRUM ALSO HAS A CUSTOM "WET" BOOTH FOR SPECIAL AIR-DRY FINISHES AND PAINTS.

Please note that no printed image can equal the exact color of finish on metal.

PAINT TIMES

TIER	COST	PAINT TIME*
Tier 1 - Standard Finishes	\$	⓪
Tier 2 - Typical Finishes	\$	⓪⓪
Tier 3 - Anodic Finishes	\$\$	⓪⓪⓪
Tier 4 - Alzak Finishes	\$\$\$	⓪⓪⓪⓪
Custom Color	Contact Factory	Contact Factory

*CONTACT FACTORY FOR SPECIFIC PRODUCT LEAD TIMES

FLANGE OPTIONS

WF

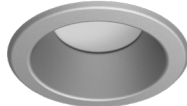
White Flange



FOR USE WITH NON-MATTE WHITE TRIM FINISH

MF

Matching Flange



BF

Black Flange



FOR USE WITH NON-MATTE BLACK TRIM FINISH

SF

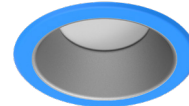
Platinum Flange



FOR USE WITH NON-PLATINUM TRIM FINISH

CCF*

Custom Color Flange



*CONTACT FACTORY

POWDER COAT PAINT FINISHES

TIER 1

MW

Matte White



MB

Matte Black



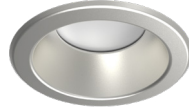
PT

Platinum Silver



SG**

Semi-Diffuse

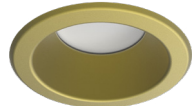


**ANODIZED FINISH

TIER 2

SN

Sun Gold



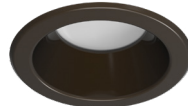
BZ

Bronze



OB

Oil Rubbed Bronze



CH

Charcoal



CO

Copper Metallic



GH

Graphite



TIER 3

AS

Anodic Sapphire



AN

Anodic Natural



AC

Anodic Champagne



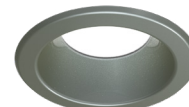
AZ

Anodic Bronze



AM

Anodic Malachite



AK

Anodic Black



ANODIZED ALZAK FINISHES

TIER 4

CL

Bright Clear



HZ

Haze Full Diffuse



WE

Rose Gold



GO

Gold Alzak Semi-Diffuse



PW

Pewter Semi-Diffuse



CC*

Custom Color



*CONTACT FACTORY

AMB***

Anti Microbial



***WHITE FINISH ONLY

