



COMMERCIAL DOWNLIGHT SERIES BY SPECTRUM

## 4" ROUND DOWNLIGHT

NON-IC CONSTRUCTION

Spectrum's Infinium 4" recessed round downlight series features a shallow plenum housing for general illumination.

LUMENS AND WATTAGE CHART			
PART NUMBER	DELIVERED LUMENS <sup>1</sup>	SYSTEM WATTS	LPW
SGE4LEDXF10L	673	6.6	102
SGE4LEDXF15L	1084	10.5	103
SGE4LEDXF20L	1458	14.4	101
SGE4LEDXF30L	2169	21.9	99
SGE4LEDXF40L	2916	30	97
SGE4LEDXF50L	3739	38.6	97

<sup>1</sup> Nominal Delivered Lumens at 35K with MW SO

PROJECT: \_\_\_\_\_  
 QUANTITY: \_\_\_\_\_ TYPE: \_\_\_\_\_



MATTE WHITE  
MATCHING FLANGE



MATTE BLACK  
MATCHING FLANGE



SEMI-DIFFUSE  
MATCHING FLANGE



PLATINUM SILVER  
MATCHING FLANGE

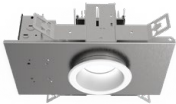


BRONZE  
MATCHING FLANGE

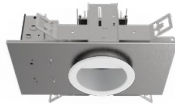


### AVAILABLE HOUSING TYPE

SGE4LEDXF - Downlight



SGW4LEDXF - Wall Wash



### PRODUCT SELECTOR GUIDE

SERIES	LUMENS	CRI / CCT	DRIVER / VOLTAGE	EMERGENCY	BAR HANGERS	TRIM TYPE	FINISH	FLANGE FINISH	LENS	TRIM OPTIONS
SGE4LEDXF						AR4223FX				
EXAMPLE										
SGE4LEDXF	15L	35K	DX		BH27	AR4223FX	MW	MF	SO	

### FIXTURE HOUSING SPECIFICATION

SERIES	LUMENS	CRI / CCT	DRIVER / VOLTAGE	EMERGENCY	BAR HANGERS
Downlight	10L 650 Lm 15L 1100 Lm 20L 1450 Lm 30L 2150 Lm 40L 2900 Lm 50L 3750 Lm	90 Minimum 27HK 2700K 30HK 3000K 35HK 3500K 40HK 4000K	DX 1%, 0-10V, 120V/277V DS2W1 1%, ELV/MLV, 120V	EMIT 7W Emergency Battery Test Switch in Trim Requires EMIT Trim. Not Available with Wall Wash EM Integral Emergency Battery EMRM Remote Emergency Battery Pack Installer Responsible For EM Access	BH27 27" Solid Bars Standard Bar Hangers H12 12" - 24" Expandable Bars CB24 24" C-Channel Bars
Wall Wash	Nominal Delivered Lumens at 35K with MW SO	80 Minimum 30K 3000K 35K 3500K 40K 4000K 50K 5000K			

### TRIM SPECIFICATION

TRIM TYPE	FINISH	FLANGE FINISH	LENS	TRIM OPTIONS
Downlight	MW Matte White MB Matte Black SG Semi-Diffuse PT Platinum Silver CC* Custom Color *Consult Factory	MF Matching Flange NON MATCHING WF White Flange BF Black Flange SF Platinum Flange CCF* Custom Color Flange *Consult Factory	STANDARD LENS FOR DOWNLIGHT SO Micro Prism Solite™ Lens	W Wet Location Gasket is Supplied with "W" Option GS Gasket
Wall Wash	See Page 6 for Full Range of Color Options (83-9078)	See Page 6 for Full Range of Color Options (83-9078)	STANDARD LENS FOR WALL WASH SK Skytex™ Lens	

GREEN TEXT INDICATES QUICK SHIP OPTIONS

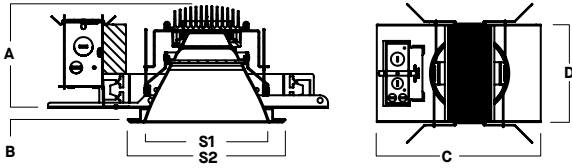
- Up to 3700 delivered lumens.
- Smooth light distribution for general illumination.
- Shallow plenum construction, under 4.5" in depth.
- L70 at >60,000 Hours at 70% lumens maintenance.
- Quick Ship options available.
- 5 year warranty on fixture and electronics.
- Sustainable fixture.
- Damp or wet location listed.
- Ease of maintenance.
- Posi-lock trim retention torsion springs.



## HOUSING DIMENSIONS

### SGE4LEDFX - NEW CONSTRUCTION

Non-IC rated, thermally protected frame-in kit for new construction.

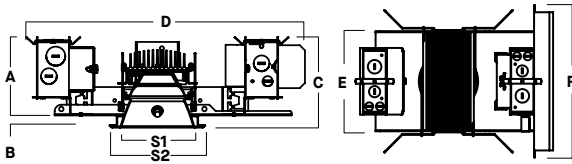


A	B	C	D	S1	S2
4.4	.625	13.3	7.9	4.0	5.4
111.8 mm	15.9 mm	337.8 mm	200.7 mm	101.6 mm	137.2 mm

Hole Cutout: Ø 4.625"

### EMIT - EMERGENCY BATTERY TEST SWITCH IN TRIM

Non-IC rated, thermally protected frame-in kit for new construction.



A	B	C	D	E	F	S1	S2
4.4	.625	5.0	15.6	7.9	12.0	4.1	5.4
111.8 mm	15.9 mm	127.0 mm	396.2 mm	200.0 mm	304.8 mm	104.14 mm	137.2 mm

## TRIM DATA

### AR4223FX - DOWNLIGHT



### AR4923FX - WALL WASH



## FEATURES

### QUICK SHIP

Quick Ship highlights products that can ship in 3 - 5 working days.

### APPLICATIONS

FX series 4" diameter downlights, designed for general downlighting with smooth light distribution.

### FEATURES

Shallow plenum construction. Companion retrofit and remodel fixtures available. Auto dim thermal protector for long term reliability. Zhaga international standard LED module for ease of maintenance and future replacement. Tool-less LED module, driver, and J-Box access. Multi-Bar mounting brackets, fit a variety of mounting bars. Posi-lock trim retention torsion springs. Integral 5/8" (.625) collar, works in ceiling up to 1" Deep. Intended for Non-IC new construction.

### FINISH

Variety of powdercoat and anodized finishes available. Matte white flange is standard.

### ELECTRONICS

LED system features high efficacy Philips LEDs. Standard CRI is >80. Drivers are overload and short circuit protected as well as thermally regulated. Sound rating A.

### CONSTRUCTION

Housing/frame constructed of #20 ga. galvanized steel to resist corrosion. Self-flanged one piece trim spun from 0.063 3002 high purity aluminum and finished to specification. Passive machined aluminum heatsink.

### CODE COMPLIANCE

BAA Compliant. Non-IC New Construction only. ETL certified to meet US and Canadian standards. Suitable for dry or damp locations. Optional Wet location listed trim. LM79/LM80 data available. Manufactured and tested to UL standards No. 1598.

### RATED LIFE

Rated for 60,000 Hours at 70% lumen maintenance. (L70)



# PHOTOMETRIC DATA - 4" ROUND DOWNLIGHT

SGE4LEDFX 50L 35K XX AR4223FX MW WF SO

CANDLEPOWER CURVE TEST SP-01242	INTENSITY CANDELA 0° AZIMUTH	ZONAL LUMENS	SINGLE UNIT: PERFORMANCE DIRECT FOOTCANDLES BASED ON DOWNLIGHT ONLY				MULTIPLE UNITS: PERFORMANCE 80/50/20% REFLECTANCES INITIAL FOOTCANDLES AND WATTS PER SQUARE FOOT					
			Mounting Height AFF	FC at Center on Floor	Beam Diameter	FC at Beam Edge	Ceiling Height	Fixture Spacing	RCR 2		RCR 4	
	0°	0° - 10° 284 8%	6'	82 fc	7.3'	26 fc	10'	6'	92	0.99	77	0.99
	0°	0° - 20° 1042 28%	8'	46 fc	9.7'	14 fc	12'	8'	57	0.62	48	0.62
	5°	0° - 30° 1972 53%	10'	30 fc	12.2'	9 fc	16'	10'	39	0.41	24	0.30
	15°	0° - 40° 2705 72%	12'	21 fc	14.6'	6 fc	Delivered Illuminance Rating: (DIR)					
	25°	0° - 60° 3452 92%	14'	15 fc	17.1'	5 fc	93 FC per W/Sq. Ft. 78 FC per W/Sq. Ft.					
	35°	0° - 80° 3702 99%	16'	12 fc	19.5'	4 fc	Recessed mounting Square rooms used for multiple units: RCR 2: Length & Width = Ceiling Ht. - 2.5' x 5.00 RCR 4: Length & Width = Ceiling Ht. - 2.5' x 2.50 * Average Footcandles at 2.5' Above Floor					
	45°	0° - 90° 3725 100%	20'	7 fc	24.4'	2 fc						
	55°	90° 6	24'	5 fc	29.2'	2 fc						
	90°	Total 3739 100%										

Delivered Lumens: 3739  
Luminaire Watts: 38.55  
LER: 96.99

CP at 0° (Nadir): 2970  
CRI: 80+

Beam Angle: 62°  
Spacing Ratio: 0.94

Lumen Multiplier: 10L x 0.18, 15L x 0.29, 20L x 0.39, 30L x 0.58, 40L x 0.78  
CCT Multiplier: 27HK x 0.77, 30K x 0.96, 40K x 1.03, 50K x 1.04

See Page 1 for System Watts for all outputs

SGE4LEDFX 50L 35K XX AR4223FX SG WF SO

CANDLEPOWER CURVE TEST SP-01242_1	INTENSITY CANDELA 0° AZIMUTH	ZONAL LUMENS	SINGLE UNIT: PERFORMANCE DIRECT FOOTCANDLES BASED ON DOWNLIGHT ONLY				MULTIPLE UNITS: PERFORMANCE 80/50/20% REFLECTANCES INITIAL FOOTCANDLES AND WATTS PER SQUARE FOOT					
			Mounting Height AFF	FC at Center on Floor	Beam Diameter	FC at Beam Edge	Ceiling Height	Fixture Spacing	RCR 2		RCR 4	
	0°	0° - 10° 357 10%	6'	105 fc	6.4'	36 fc	10'	6'	91	0.98	79	0.98
	0°	0° - 20° 1254 35%	8'	59 fc	8.5'	20 fc	12'	8'	57	0.61	49	0.61
	5°	0° - 30° 2264 63%	10'	38 fc	10.6'	13 fc	16'	10'	38	0.41	24	0.30
	15°	0° - 40° 2999 84%	12'	26 fc	12.7'	9 fc	Delivered Illuminance Rating: (DIR)					
	25°	0° - 60° 3520 98%	14'	19 fc	14.9'	7 fc	92 FC per W/Sq. Ft. 80 FC per W/Sq. Ft.					
	35°	0° - 80° 3561 99%	16'	15 fc	17.0'	5 fc	Recessed mounting Square rooms used for multiple units: RCR 2: Length & Width = Ceiling Ht. - 2.5' x 5.00 RCR 4: Length & Width = Ceiling Ht. - 2.5' x 2.50 * Average Footcandles at 2.5' Above Floor					
	45°	0° - 90° 3565 100%	20'	9 fc	21.2'	3 fc						
	55°	90° 2	24'	7 fc	25.5'	2 fc						
	90°	Total 3579 100%										

Delivered Lumens: 3579  
Luminaire Watts: 38.47  
LER: 93.03

CP at 0° (Nadir): 3779  
CRI: 80+

Beam Angle: 56°  
Spacing Ratio: 0.85

Lumen Multiplier: 10L x 0.18, 15L x 0.29, 20L x 0.39, 30L x 0.58, 40L x 0.78  
CCT Multiplier: 27HK x 0.77, 30K x 0.96, 40K x 1.03, 50K x 1.04

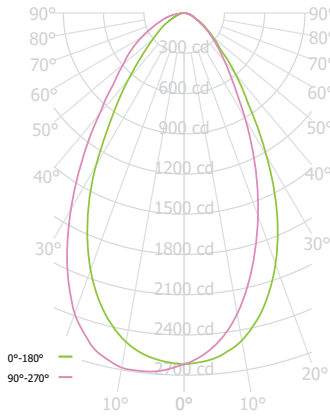
See Page 1 for System Watts for all outputs



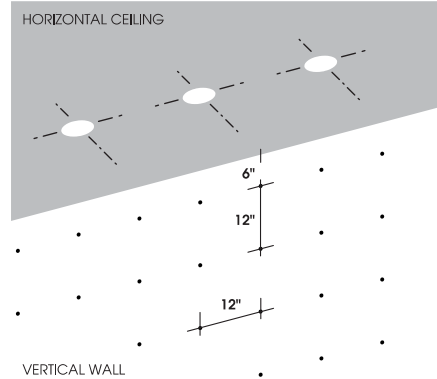
# PHOTOMETRIC DATA - 4" ROUND WALL WASH

SGW4LEDFX 50L 35K XX AR4923FX MW WF SK

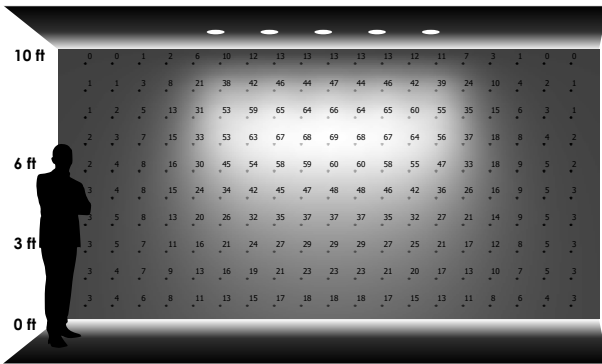
CANDLEPOWER CURVE TEST SP-01233	PERFORMANCE SUMMARY	REFERENCE DIAGRAM
------------------------------------	---------------------	-------------------



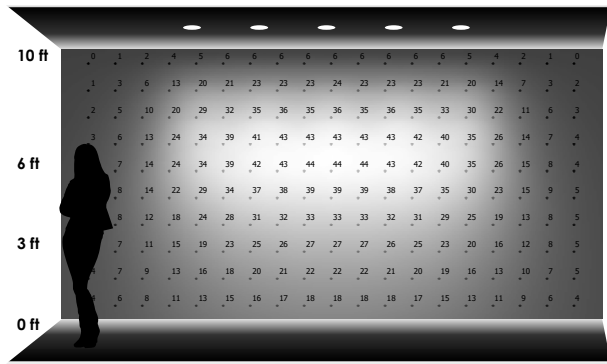
Delivered Lumens: 3045  
 Luminaire Watts: 38.3  
 LER: 79.50  
 CP at 0deg (Nadir): 2619  
 CRI: 80+  
 Lumen Multiplier: 10L x 0.18, 15L x 0.29, 20L x 0.39, 30L x 0.58, 40L x 0.78  
 CCT Multiplier: 27HK x 0.77, 30K x 0.96, 40K x 1.03, 50K x 1.04



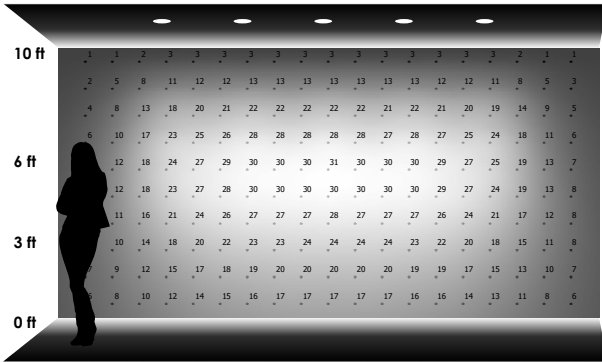
## PERFORMANCE DATA - INITIAL ILLUMINATION (FOOTCANDLES) ON WALL - DIRECT LIGHT ONLY



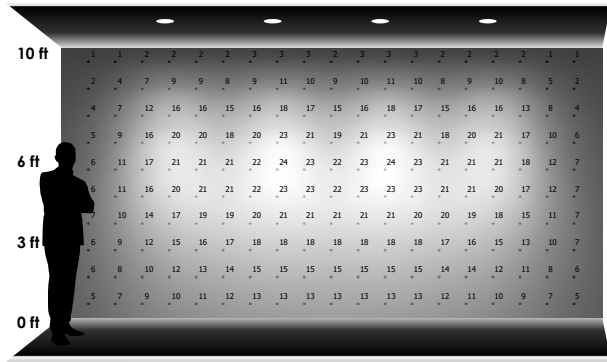
**5 LUMINAIRES**  
 2'-0" away from wall  
 2'-0" between luminaires



**5 LUMINAIRES**  
 2'-6" away from wall  
 2'-6" between luminaires



**5 LUMINAIRES**  
 3'-0" away from wall  
 3'-0" between luminaires

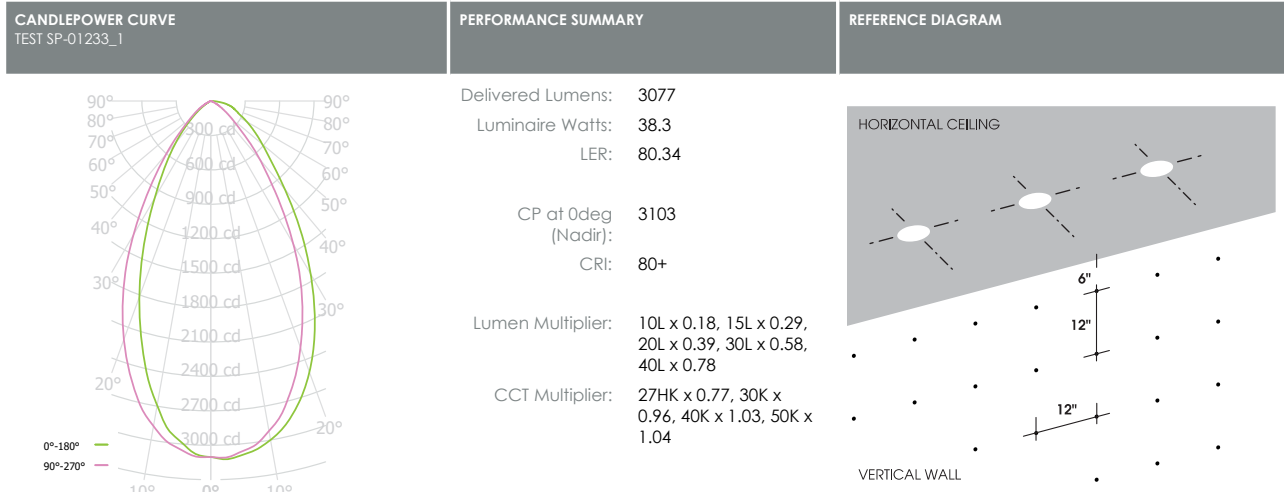


**4 LUMINAIRES**  
 3'-0" away from wall  
 4'-0" between luminaires

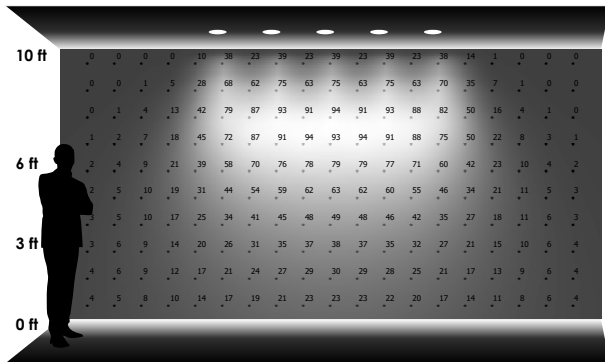


# PHOTOMETRIC DATA - 4" ROUND WALL WASH

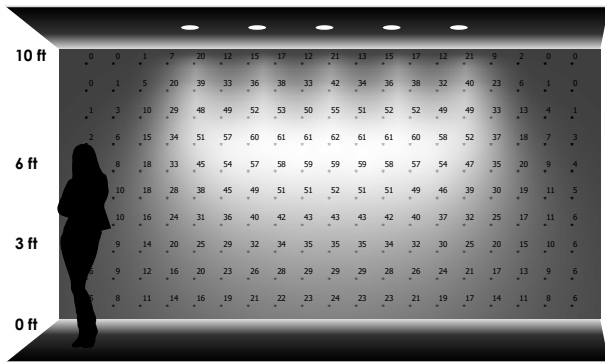
SGW4LEDFX 50L 35K XX AR4923FX SG WF SK



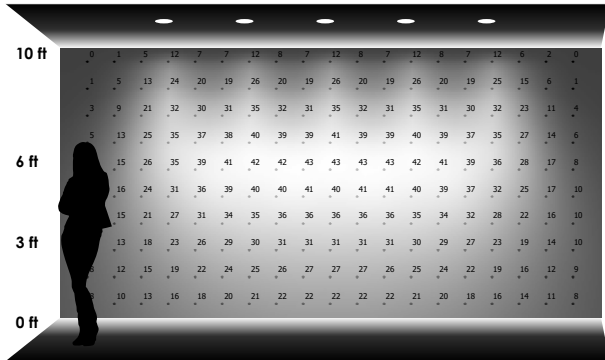
## PERFORMANCE DATA - INITIAL ILLUMINATION (FOOTCANDLES) ON WALL - DIRECT LIGHT ONLY



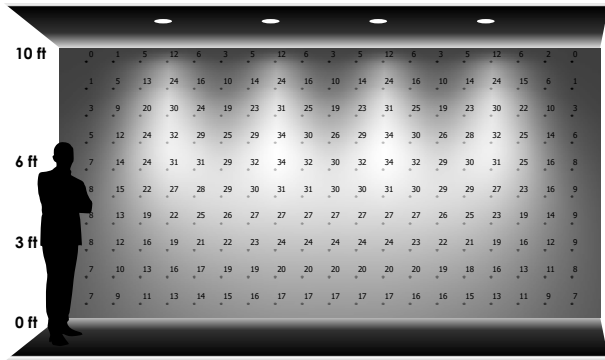
**5 LUMINAIRES**  
2'-0" away from wall  
2'-0" between luminaires



**5 LUMINAIRES**  
2'-6" away from wall  
2'-6" between luminaires



**5 LUMINAIRES**  
3'-0" away from wall  
3'-0" between luminaires



**4 LUMINAIRES**  
3'-0" away from wall  
4'-0" between luminaires



# SPUN TRIM AND FLANGE FINISH OPTIONS - RECESSED ROUND



SPECTRUM LIGHTING RUNS A STATE OF THE ART POWDER COAT PROCESS WITH A FIVE STAGE CHROMATE PRETREAT AND MULTI STAGE OVEN. THREE BOOTHS ARE FED SO WE ARE ABLE TO RUN MULTIPLE COLORS ON ANY GIVEN DAY. SPECTRUM ALSO HAS A CUSTOM "WET" BOOTH FOR SPECIAL AIR-DRY FINISHES AND PAINTS.

Please note that no printed image can equal the exact color of finish on metal.

## PAINT TIMES

TIER	COST	PAINT TIME*
Tier 1 - Standard Finishes	\$	⓪
Tier 2 - Typical Finishes	\$	⓪⓪
Tier 3 - Anodic Finishes	\$\$	⓪⓪⓪
Tier 4 - Alzak Finishes	\$\$\$	⓪⓪⓪⓪
Custom Color	Contact Factory	Contact Factory

\*CONTACT FACTORY FOR SPECIFIC PRODUCT LEAD TIMES

## FLANGE OPTIONS

### WF

White Flange



FOR USE WITH NON-MATTE WHITE TRIM FINISH

### MF

Matching Flange



### BF

Black Flange



FOR USE WITH NON-MATTE BLACK TRIM FINISH

### SF

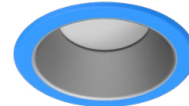
Platinum Flange



FOR USE WITH NON-PLATINUM TRIM FINISH

### CCF\*

Custom Color Flange



\*CONTACT FACTORY

## POWDER COAT PAINT FINISHES

### TIER 1

#### MW

Matte White



#### MB

Matte Black



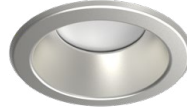
#### PT

Platinum Silver



#### SG\*\*

Semi-Diffuse

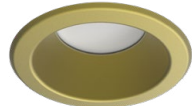


\*\*ANODIZED FINISH

### TIER 2

#### SN

Sun Gold



#### BZ

Bronze



#### OB

Oil Rubbed Bronze



#### CH

Charcoal



#### CO

Copper Metallic



#### GH

Graphite



### TIER 3

#### AS

Anodic Sapphire



#### AN

Anodic Natural



#### AC

Anodic Champagne



#### AZ

Anodic Bronze



#### AM

Anodic Malachite



#### AK

Anodic Black



## ANODIZED ALZAK FINISHES

### TIER 4

#### CL

Bright Clear



#### HZ

Haze Full Diffuse



#### WE

Rose Gold



#### GO

Gold Alzak Semi-Diffuse



#### PW

Pewter Semi-Diffuse



### CC\*

Custom Color



\*CONTACT FACTORY

### AMB\*\*\*

Anti Microbial



\*\*\*WHITE FINISH ONLY

