



COMMERCIAL DOWNLIGHT SERIES BY SPECTRUM

6" ROUND DOWNLIGHT

NON-IC CONSTRUCTION

Spectrum's Infinium 6" recessed round downlight series features a shallow plenum housing for general illumination.

LUMENS AND WATTAGE CHART			
PART NUMBER	DELIVERED LUMENS ¹	SYSTEM WATTS	LPW
SGE6LEDFX10L	746	6.6	113
SGE6LEDFX15L	1160	10.5	110
SGE6LEDFX20L	1574	14.4	109
SGE6LEDFX30L	2361	21.9	108
SGE6LEDFX40L	3188	30	106
SGE6LEDFX50L	4056	38.3	106

¹ Nominal Delivered Lumens at 35K with MW SO

PROJECT: _____
 QUANTITY: _____ TYPE: _____



MATTE WHITE
MATCHING FLANGE



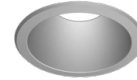
MATTE BLACK
MATCHING FLANGE



SEMI-DIFFUSE
MATCHING FLANGE



PLATINUM SILVER
MATCHING FLANGE

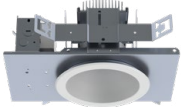


BRONZE
MATCHING FLANGE

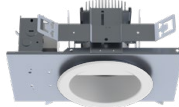


AVAILABLE HOUSING TYPE

SGE6LEDFX - Downlight



SGW6LEDFX - Wall Wash



PRODUCT SELECTOR GUIDE

SERIES	LUMENS	CRI / CCT	DRIVER / VOLTAGE	EMERGENCY	BAR HANGERS	TRIM TYPE	FINISH	FLANGE FINISH	LENS	TRIM OPTIONS
SGE6LEDFX						AR6223FX				
EXAMPLE										
SGE6LEDFX	15L	35K	DX		BH27	AR6223FX	MW	MF	SO	

FIXTURE HOUSING SPECIFICATION

SERIES	LUMENS	CRI / CCT	DRIVER / VOLTAGE	EMERGENCY	BAR HANGERS
Downlight	10L 750 Lm 15L 1150 Lm 20L 1600 Lm 30L 2350 Lm 40L 3200 Lm 50L 4050 Lm	90 Minimum 27HK 2700K 30HK 3000K 35HK 3500K 40HK 4000K	DX 1%, 0-10V, 120V/277V DS2W1 1%, ELV/MLV, 120V	EMIT 7W Emergency Battery Test Switch in Trim Requires EMIT Trim. Not Available with Wall Wash EM Integral Emergency Battery EMRM Remote Emergency Battery Pack Installer Responsible For EM Access	BH27 27" Solid Bars Standard Bar Hangers H12 12" - 24" Expandable Bars CB24 24" C-Channel Bars
Wall Wash	Nominal Delivered Lumens at 35K with MW SO	80 Minimum 30K 3000K 35K 3500K 40K 4000K 50K 5000K			

TRIM SPECIFICATION

TRIM TYPE	FINISH	FLANGE FINISH	LENS	TRIM OPTIONS
Downlight AR6223FX AR6223FXEMIT Requires EMIT Housing. Not Available with Wall Wash	MW Matte White MB Matte Black SG Semi-Diffuse PT Platinum Silver CC* Custom Color *Consult Factory	MF Matching Flange NON MATCHING WF White Flange BF Black Flange SF Platinum Flange CCF* Custom Color Flange *Consult Factory	STANDARD LENS FOR DOWNLIGHT SO Micro Prism Solite™ Lens	W Wet Location Gasket is Supplied with "W" Option GS Gasket
Wall Wash AR6923FX	See Page 6 for Full Range of Color Options (83-9078)	See Page 6 for Full Range of Color Options (83-9078)	STANDARD LENS FOR WALL WASH SK Skytex™ Lens	

GREEN TEXT INDICATES QUICK SHIP OPTIONS

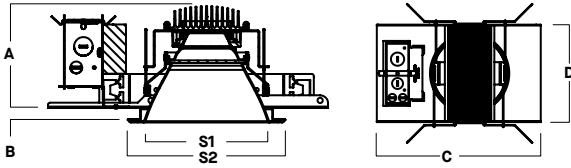
- Up to 4000 delivered lumens.
- Smooth light distribution for general illumination.
- Shallow plenum construction, less than 5" depth.
- L70 at >60,000 Hours at 70% lumens maintenance.
- Quick Ship options available.
- 5 year warranty on fixture and electronics.
- Sustainable fixture.
- Damp or wet location listed.
- Ease of maintenance.
- Posi-lock trim retention torsion springs.



HOUSING DIMENSIONS

SGE6LEDFX - NEW CONSTRUCTION

Non-IC rated, thermally protected frame-in kit for new construction.

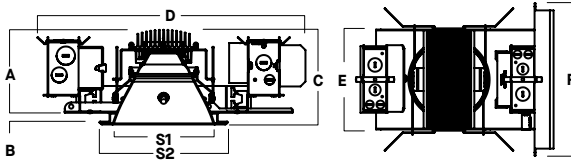


A	B	C	D	S1	S2
4.8	.625	13.3	7.9	5.8	7.5
121.9 mm	15.9 mm	337.8 mm	200.7 mm	147.3 mm	190.5 mm

Hole Cutout: Ø 6.375"

EMIT - EMERGENCY BATTERY TEST SWITCH IN TRIM

Non-IC rated, thermally protected frame-in kit for new construction.



A	B	C	D	E	F	S1	S2
4.8	.625	5.5	15.6	7.9	12.0	5.9	7.5
121.9 mm	15.9 mm	139.7 mm	396.2 mm	200.0 mm	304.8 mm	149.9 mm	190.5 mm

TRIM DATA

AR6223FX - DOWNLIGHT



AR6923FX - WALL WASH



FEATURES

QUICK SHIP

Quick Ship highlights products that can ship in 3 - 5 working days.

APPLICATIONS

FX series 6" diameter downlights, designed for general downlighting with smooth light distribution.

FEATURES

Shallow plenum construction. Companion retrofit and remodel fixtures available. Auto dim thermal protector for long term reliability. Zhaga international standard LED module for ease of maintenance and future replacement. Tool-less LED module, driver, and J-Box access. Multi-Bar mounting brackets, fit a variety of mounting bars. Posi-lock trim retention torsion springs. Integral 5/8" (.625) collar, works in ceiling up to 1" Deep. Intended for Non-IC new construction.

FINISH

Variety of powdercoat and anodized finishes available. Matte white flange is standard.

ELECTRONICS

LED system features high efficacy Philips LEDs. Standard CRI is >80. Drivers are overload and short circuit protected as well as thermally regulated. Sound rating A.

CONSTRUCTION

Housing/frame constructed of #20 ga. galvanized steel to resist corrosion. Self-flanged one piece trim spun from 0.063 3002 high purity aluminum and finished to specification. Passive machined aluminum heatsink.

CODE COMPLIANCE

BAA Compliant. Non-IC New Construction only. ETL certified to meet US and Canadian standards. Suitable for dry or damp locations. Optional Wet location listed trim. LM79/LM80 data available. Manufactured and tested to UL standards No. 1598.

RATED LIFE

Rated for 60,000 Hours at 70% lumen maintenance. (L70)



PHOTOMETRIC DATA - 6" ROUND DOWNLIGHT

SGE6LEDFX 50L 35K XX AR6223FX MW WF SO

CANDLEPOWER CURVE TEST SP-01232	INTENSITY CANDELA 0° AZIMUTH	ZONAL LUMENS	SINGLE UNIT: PERFORMANCE DIRECT FOOTCANDLES BASED ON DOWNLIGHT ONLY	MULTIPLE UNITS: PERFORMANCE 80/50/20% REFLECTANCES INITIAL FOOTCANDLES AND WATTS PER SQUARE FOOT								
	0°	0° - 10° 297 7%	Mounting Height AFF	FC at Center on Floor	Beam Diameter	FC at Beam Edge	Ceiling Height	Fixture Spacing	RCR 2		RCR 4	
	0° 3080	0° - 20° 1123 28%	8'	48 fc	10.7'	14 fc	10'	8"	FC *	W/Sq. Ft.	FC *	W/Sq. Ft.
	5° 3077	0° - 30° 2247 55%	10'	31 fc	13.4'	9 fc	12'	10"	70	0.68	38	0.44
	15° 2934	0° - 40° 3151 78%	12'	21 fc	16.1'	6 fc	16'	12'	44	0.43	24	0.27
	25° 2445	0° - 60° 3840 95%	14'	16 fc	18.7'	4 fc	Delivered Illuminance Rating: (DIR)					
	35° 1402	0° - 80° 4037 100%	16'	12 fc	21.4'	3 fc	102 FC per W/Sq. Ft. 87 FC per W/Sq. Ft.					
	45° 535	0° - 90° 4056 100%	20'	8 fc	26.8'	2 fc	Recessed mounting Square rooms used for multiple units: RCR 2: Length & Width = Ceiling Ht. - 2.5' x 5.00 RCR 4: Length & Width = Ceiling Ht. - 2.5' x 2.50					
	55° 247	Total 4056 100%	24'	5 fc	32.1'	2 fc	* Average Footcandles at 2.5' Above Floor					
	90° 3		28'	4 fc	37.5'	1 fc	** Exceeds Spacing Ratio by 3%					
							** Exceeds Spacing Ratio by 1%					

Delivered Lumens: 4056
Luminaire Watts: 38.4
LER: 105.63

CP at 0° (Nadir): 3080
CRI: 80+

Beam Angle: 69°
Spacing Ratio: 1.04

Lumen Multiplier: 10L x 0.18, 15L x 0.29, 20L x 0.39, 30L x 0.58, 40L x 0.78
CCT Multiplier: 27HK x 0.77, 30K x 0.96, 40K x 1.03, 50K x 1.04

See Page 1 for System Watts for all outputs

SGE6LEDFX 50L 35K XX AR6223FX SG WF SO

CANDLEPOWER CURVE TEST SP-01232_1	INTENSITY CANDELA 0° AZIMUTH	ZONAL LUMENS	SINGLE UNIT: PERFORMANCE DIRECT FOOTCANDLES BASED ON DOWNLIGHT ONLY	MULTIPLE UNITS: PERFORMANCE 80/50/20% REFLECTANCES INITIAL FOOTCANDLES AND WATTS PER SQUARE FOOT								
	0°	0° - 10° 440 11%	Mounting Height AFF	FC at Center on Floor	Beam Diameter	FC at Beam Edge	Ceiling Height	Fixture Spacing	RCR 2		RCR 4	
	0° 4746	0° - 20° 1520 39%	8'	74 fc	8.3'	25 fc	12'	8"	FC *	W/Sq. Ft.	FC *	W/Sq. Ft.
	5° 4656	0° - 30° 2736 70%	10'	47 fc	10.4'	16 fc	16'	10"	63	0.61	55	0.61
	15° 4005	0° - 40° 3535 91%	12'	33 fc	12.4'	11 fc	20'	12'	42	0.41	27	0.30
	25° 2858	0° - 60° 3889 100%	14'	24 fc	14.5'	8 fc	Delivered Illuminance Rating: (DIR)					
	35° 1470	0° - 80° 3899 100%	16'	19 fc	16.6'	6 fc	102 FC per W/Sq. Ft. 90 FC per W/Sq. Ft.					
	45° 409	0° - 90° 3901 100%	20'	12 fc	20.7'	4 fc	Recessed mounting Square rooms used for multiple units: RCR 2: Length & Width = Ceiling Ht. - 2.5' x 5.00 RCR 4: Length & Width = Ceiling Ht. - 2.5' x 2.50					
	55° 92	Total 3901 100%	24'	8 fc	24.9'	3 fc	* Average Footcandles at 2.5' Above Floor					
	90° 2		28'	6 fc	29.0'	2 fc						

Delivered Lumens: 3901
Luminaire Watts: 38.4
LER: 101.59

CP at 0° (Nadir): 4746
CRI: 80+

Beam Angle: 55°
Spacing Ratio: 0.86

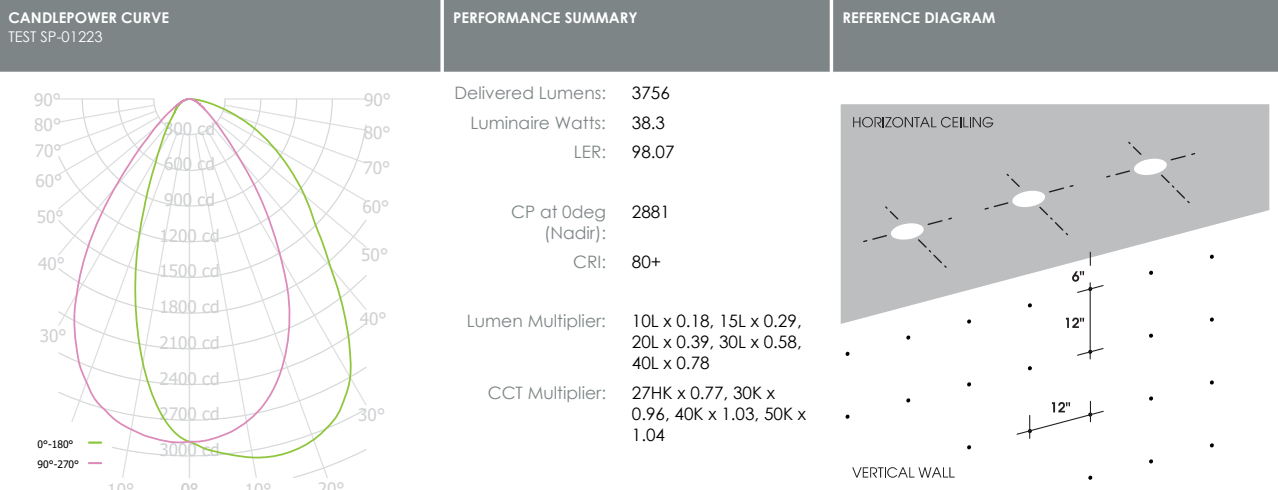
Lumen Multiplier: 10L x 0.18, 15L x 0.29, 20L x 0.39, 30L x 0.58, 40L x 0.78
CCT Multiplier: 27HK x 0.77, 30K x 0.96, 40K x 1.03, 50K x 1.04

See Page 1 for System Watts for all outputs

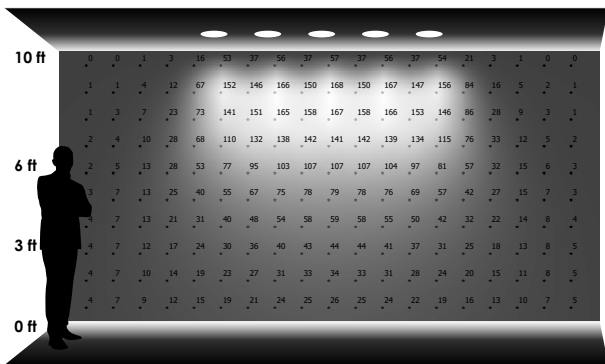


PHOTOMETRIC DATA - 6" ROUND WALL WASH

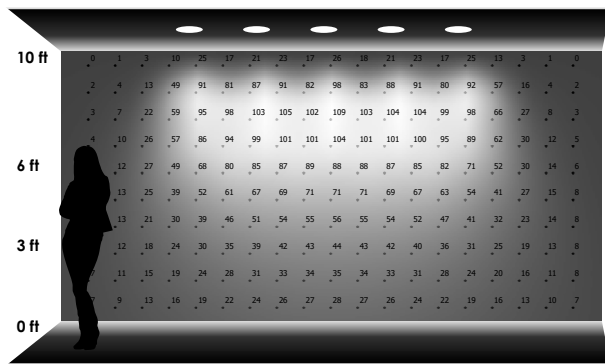
SGW6LEDFX 50L 35K XX AR6923FX MW WF SK



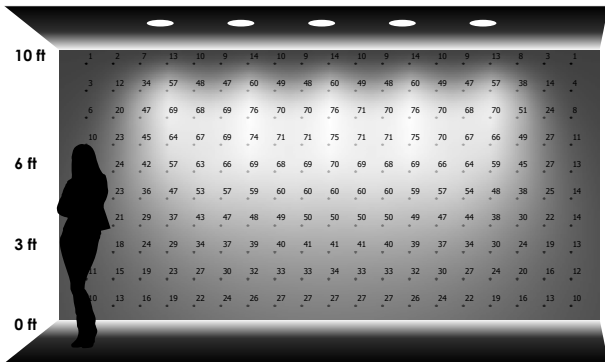
PERFORMANCE DATA - INITIAL ILLUMINATION (FOOTCANDLES) ON WALL - DIRECT LIGHT ONLY



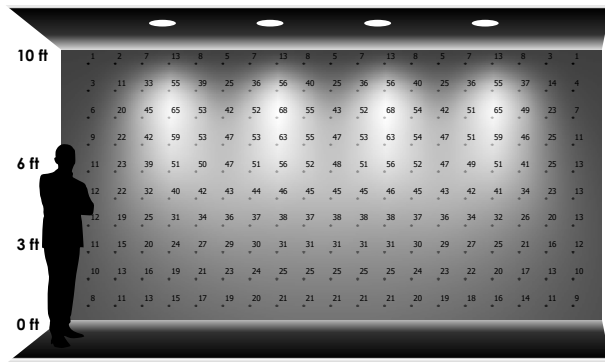
5 LUMINAIRES
2'-0" away from wall
2'-0" between luminaires



5 LUMINAIRES
2'-6" away from wall
2'-6" between luminaires



5 LUMINAIRES
3'-0" away from wall
3'-0" between luminaires

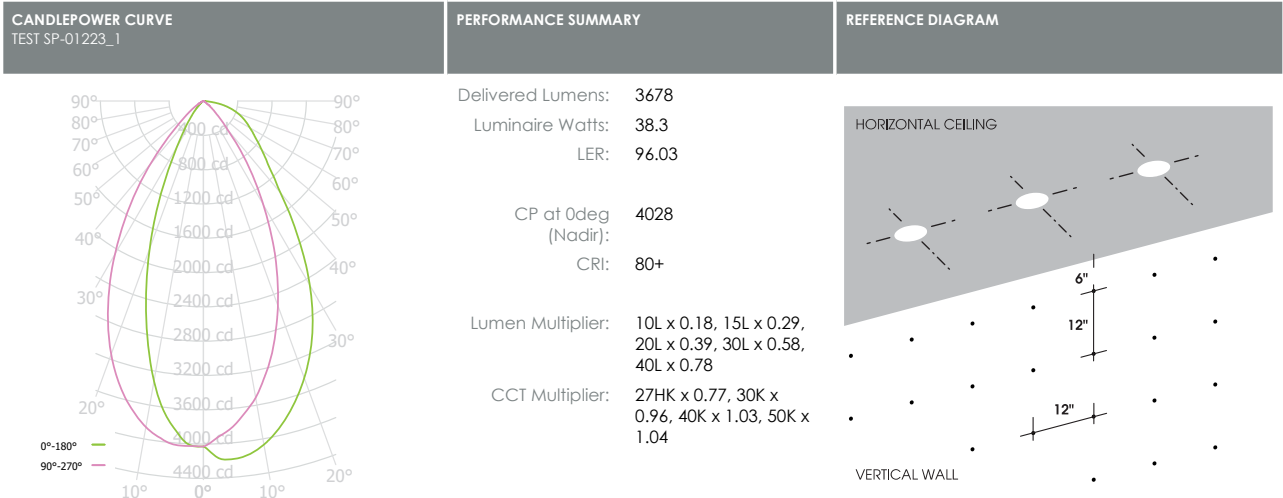


4 LUMINAIRES
3'-0" away from wall
4'-0" between luminaires

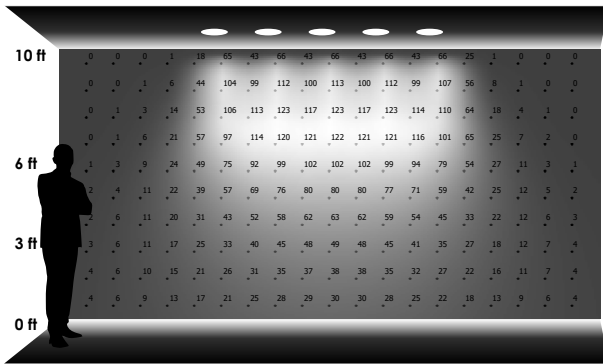


PHOTOMETRIC DATA - 6" ROUND WALL WASH

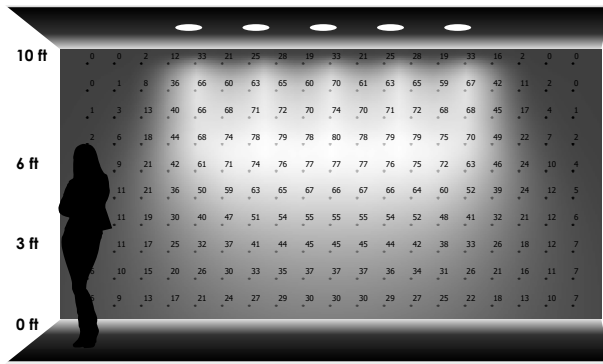
SGW6LEDFX 50L 35K XX AR6923FX SG WF SK



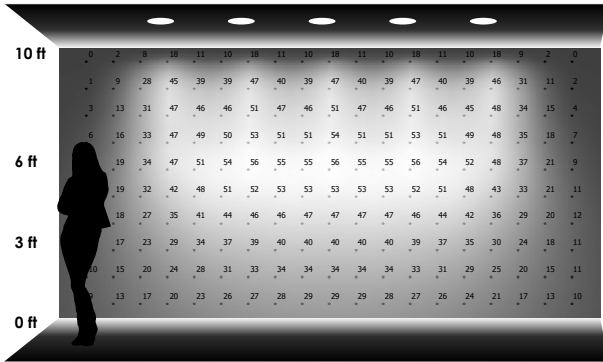
PERFORMANCE DATA - INITIAL ILLUMINATION (FOOTCANDLES) ON WALL - DIRECT LIGHT ONLY



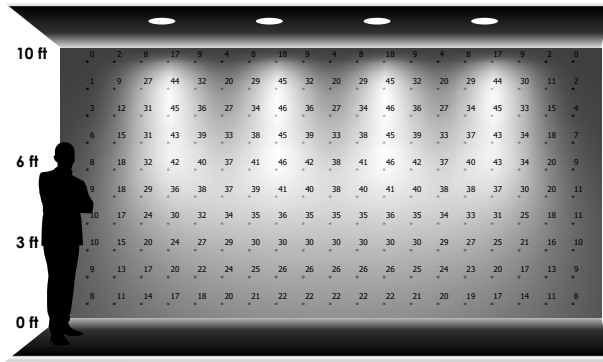
5 LUMINAIRES
2'-0" away from wall
2'-0" between luminaires



5 LUMINAIRES
2'-6" away from wall
2'-6" between luminaires



5 LUMINAIRES
3'-0" away from wall
3'-0" between luminaires



4 LUMINAIRES
3'-0" away from wall
4'-0" between luminaires



SPUN TRIM AND FLANGE FINISH OPTIONS - RECESSED ROUND



SPECTRUM LIGHTING RUNS A STATE OF THE ART POWDER COAT PROCESS WITH A FIVE STAGE CHROMATE PRETREAT AND MULTI STAGE OVEN. THREE BOOTHS ARE FED SO WE ARE ABLE TO RUN MULTIPLE COLORS ON ANY GIVEN DAY. SPECTRUM ALSO HAS A CUSTOM "WET" BOOTH FOR SPECIAL AIR-DRY FINISHES AND PAINTS.

Please note that no printed image can equal the exact color of finish on metal.

PAINT TIMES

TIER	COST	PAINT TIME*
Tier 1 - Standard Finishes	\$	⓪
Tier 2 - Typical Finishes	\$	⓪⓪
Tier 3 - Anodic Finishes	\$\$	⓪⓪⓪
Tier 4 - Alzak Finishes	\$\$\$	⓪⓪⓪⓪
Custom Color	Contact Factory	Contact Factory

*CONTACT FACTORY FOR SPECIFIC PRODUCT LEAD TIMES

FLANGE OPTIONS

WF

White Flange



FOR USE WITH NON-MATTE WHITE TRIM FINISH

MF

Matching Flange



BF

Black Flange



FOR USE WITH NON-MATTE BLACK TRIM FINISH

SF

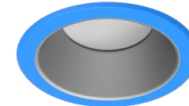
Platinum Flange



FOR USE WITH NON-PLATINUM TRIM FINISH

CCF*

Custom Color Flange



*CONTACT FACTORY

POWDER COAT PAINT FINISHES

TIER 1

MW

Matte White



MB

Matte Black



PT

Platinum Silver



SG**

Semi-Diffuse

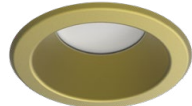


**ANODIZED FINISH

TIER 2

SN

Sun Gold



BZ

Bronze



OB

Oil Rubbed Bronze



CH

Charcoal



CO

Copper Metallic



GH

Graphite



TIER 3

AS

Anodic Sapphire



AN

Anodic Natural



AC

Anodic Champagne



AZ

Anodic Bronze



AM

Anodic Malachite



AK

Anodic Black



ANODIZED ALZAK FINISHES

TIER 4

CL

Bright Clear



HZ

Haze Full Diffuse



WE

Rose Gold



GO

Gold Alzak Semi-Diffuse



PW

Pewter Semi-Diffuse



CC*

Custom Color



*CONTACT FACTORY

AMB***

Anti Microbial



***WHITE FINISH ONLY

