



**WALL MOUNT CONCORDIA**  
**DAMP / WET LOCATION**  
**TIERS**

PROJECT: \_\_\_\_\_

QUANTITY: \_\_\_\_\_ TYPE: \_\_\_\_\_



CN1812GV  
 CO - Copper Metallic



CN1812GV  
 AM - Anodic Malachite



CN1812GV  
 MB - Matte Black



CN1812GV  
 GH - Graphite

SERIES	LUMENS <sup>1</sup>	CCT	DRIVER / DIMMING <sup>2</sup>	ACCESSORIES	MOUNTING <sup>5</sup>	FINISH <sup>7</sup>	WET KIT
CN1812GV	15L 1500 Lm	80 CRI	EX Electronic Driver, 120V/277V ELV/MLV, 120V DS2W1 <sup>3</sup> 1%, 0-10V, 120V/277V DO10X	FJ2 <sup>4</sup> 4" Frosted Tall 4" MF2 Frosted Mini	CP104 Small Driver Canopy CP104KO Small Driver Canopy w/ Knockouts CP106 Large Driver Canopy CP6/RMD Remote Mount Driver SP <sup>6</sup> Straight Arm EMRM 7W Remote EM EMEN 7W Remote with Enclosure	MW <sup>8</sup> Matte White MB <sup>8</sup> Matte Black PT <sup>8</sup> Platinum Silver CC Custom Color	WLKA Wet Location Kit
	27L 2700 Lm 37L 3700 Lm 45L 4500 Lm						

See Page 5 for Full Range of Color Options (83-90083)

EXAMPLE: CN1812GV15L35KEXFJ2CP104SP12CO

**NOTES:**  
 1 Nominal Source Lumens at 35K 2 Contact Factory for Additional Options 3 37L Max with CP104, 45L Max with CP106 4 Standard Enclosure  
 5 See Mounting Page for Details on Components and Finishes 6 See Mounting Page for Available Arm Options  
 7 See Color Page for More Options/Consult Factory for Special Finishes 8 Standard Finishes



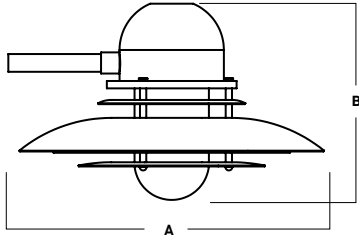


# WALL MOUNT CONCORDIA DAMP / WET LOCATION TIERS

LUMENS / WATTAGE DATA				
PART NUMBER	SOURCE LUMENS <sup>1</sup>	DELIVERED LUMENS <sup>2</sup>	SYSTEM WATTS	LPW
CN1812GV15L	1500	618	10	62
CN1812GV27L	2700	1053	18	59
CN1812GV37L	3700	1557	26	60
CN1812GV45L	4500	2289	32	72

<sup>1</sup> Nominal Source Lumens at 35K    <sup>2</sup> Nominal Delivered Lumens at 35K

## HOUSING DIMENSIONS



A	B
18.0 457.2 mm	11.6 294.6 mm

## APPLICATION

The Wall Mount Concordia is one of our most elegant RLM styles.

## FEATURES

Spectrum Lighting's RLM Classics are reproductions of Classic lighting fixtures reimaged with modern LED light sources and materials. The wide range of options for illumination, enclosures, and finishes allows for creative fixture specification and design. LED module and driver are serviceable for future replacement.

## FINISH

Multi-stage polyester powder-coat process applied on our dedicated paint lines. Variety of standard and custom finishes are available. Interior painted same finish as exterior.

## ELECTRONICS

GV LED system features high brightness white Samsung LED's. 3-step MacAdam Ellipse binning. Standard CRI: 80+. Higher CRI, R9 and custom LED configurations are available; consult factory. Choice of electronic 120V/277V and dimming drivers.

## CONSTRUCTION

Fixture shades are spun in our factory from 0.063 high purity aluminum. Wall mount canopies are cast aluminum with stainless steel hardware.

## CODE COMPLIANCE

BAA compliant. ETL certified to meet US and Canadian standards. Suitable for dry or damp locations. Wet Location Option. Manufactured and tested to UL standards No. 1598/8750.

## ENCLOSURES

### MF2

4" FROSTED MINI



### FJ2

4" FROSTED TALL

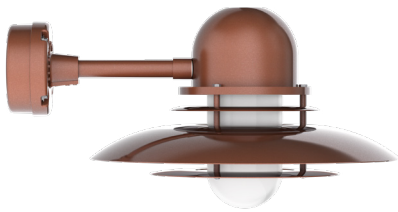


## WALL MOUNT

(SEE MOUNTING PAGES FOR MORE OPTIONS & DIMENSIONS.)

### SP\_

MOUNTING ARM STYLE



CN1812GV SHOWN WITH GP104SP12





# WALL MOUNT CONCORDIA

## DAMP / WET LOCATION

### TIERS / PHOTOMETRIC DATA

CN1812GV 45L 35K EX FJ2

CANDLEPOWER CURVE TEST SP-00960 (83-50008)	INTENSITY CANDELA 0° AZIMUTH	ZONAL LUMENS		SINGLE UNIT: PERFORMANCE INITIAL FOOTCANDLES BASED ON IES BEAM ANGLE				MULTIPLE UNITS: PERFORMANCE 80/50/20% REFLECTANCES INITIAL FOOTCANDLES AND WATTS PER SQUARE FOOT							
		0° - 10°	76	3%	Mounting Height AFF	FC at Center on Floor	Beam Diameter	FC at Beam Edge	Ceiling Height	Fixture Spacing	RCR 2		RCR 4		
	0.00°	0.00°	0° - 10°	76	3%	6.5'	19 fc	9.9'	5 fc	9'	4'	119	2.07	68	1.52
	0.00°	810	0° - 20°	270	12%	7.5'	14 fc	11.4'	4 fc	12'	6'	50	0.87	28	0.64
	5.00°	806	0° - 30°	525	23%	8.5'	11 fc	12.9'	3 fc	16'	8'	30	0.52	23	0.52
	10.00°	758	0° - 40°	794	35%	10.0'	8 fc	15.2'	2 fc	Delivered Illuminance Rating: (DIR)		58 FC per W/Sq. Ft.		45 FC per W/Sq. Ft.	
	15.00°	696	0° - 60°	1,291	56%	12.0'	6 fc	18.3'	1 fc	1' Suspension Length Square rooms used for multiple units: - RCR 2: Length & Width = Ceiling Ht. - 3.5' x 5.00 - RCR 4: Length & Width = Ceiling Ht. - 3.5' x 2.50 * Average Footcandles at 2.5' Above Floor					
	20.00°	624	0° - 80°	1,777	78%	14.0'	4 fc	21.3'	1 fc						
	30.00°	488	0° - 90°	1,985	87%	16.0'	3 fc	24.4'	1 fc						
	40.00°	377	Total	2,289	100%	20.0'	2 fc	30.5'	1 fc						
	50.00°	297					Beam Angle: 74.59				Lumen Multiplier: 15L x 0.27, 27L x 0.46, 37L x 0.68				
	60.00°	239	CP at 0deg (Nadir): 810				Spacing Ratio: 0.94				CCT Multiplier: 27K x 0.97, 30K x 0.99, 40K x 1.03				
	70.00°	233	CRI: 80												
	80.00°	234													
90.00°	151														

Delivered Lumens: 2,289  
Luminaire Watts: 32  
LER: 71.53

CP at 0deg (Nadir): 810  
CRI: 80

Beam Angle: 74.59  
Spacing Ratio: 0.94

Lumen Multiplier: 15L x 0.27, 27L x 0.46, 37L x 0.68  
CCT Multiplier: 27K x 0.97, 30K x 0.99, 40K x 1.03



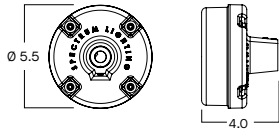
# MOUNTING & ACCESSORIES

SOME OPTIONS NOT AVAILABLE ON ALL FIXTURES. CONSULT SPECIFICATION SHEETS. SEE INDIVIDUAL SPECIFICATION SHEETS OR CONSULT FACTORY FOR ADDITIONAL INFORMATION. NOTE: THIS IS TYPICAL OF RLM SPECIFICATION FOR MOUNTING. INDIVIDUAL FIXTURES OR PROJECTS MAY HAVE SPECIALIZED REQUIREMENTS.

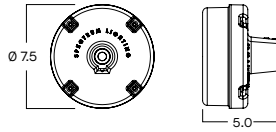


## WALL MOUNTING

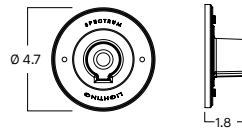
**CP104 - SMALL DRIVER CANOPY (STANDARD)**  
MAY BE USED AS SPLICE BOX FOR DIRECT FEED



**CP106 - LARGE DRIVER CANOPY**  
MAY BE USED AS SPLICE BOX FOR DIRECT FEED



**CP6/RMD - REMOTE MOUNT DRIVER**  
MOUNTS DIRECTLY TO WALL OR OCTAGON STYLE J-BOX

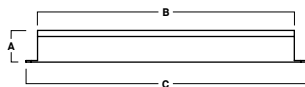


CUSTOM AND OTHER WALL ARMS AVAILABLE - CONTACT FACTORY. ARMS MAY BE FIELD CUT ON WALL SIDE - FIXTURE SIDE THREADED 3/4" NPT REQUIRES SEALANT FOR WET LOCATION.

**SP(xx)** 6", 12" & 24"  
Designed for Straight Arm Mounting  
— SPECIFY LENGTH —  
EXAMPLE: SP6 - STRAIGHT PIPE 6" LONG

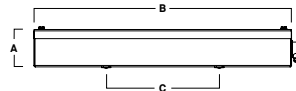
## REMOTE EMERGENCY BATTERY OPTIONS

**EMRM\* - 7W REMOTE EMERGENCY BATTERY**  
(50" MAX)



A	B	C
1.3	12.6	13.0

**EMEN\* - 7W REMOTE EMERGENCY BATTERY WITH ENCLOSURE**  
(50" MAX)



A	B	C
2.0	17.0	6.2

\*OTHER EM BATTERY SIZES AVAILABLE. CONTACT FACTORY.



# COLOR OPTIONS - POWDER COAT PAINT FINISHES

NOTE: NO PRINTED IMAGE CAN EQUAL THE EXACT COLOR OF FINISH ON METAL.  
SEE INDIVIDUAL SPECIFICATION SHEETS OR CONSULT FACTORY FOR ADDITIONAL INFORMATION.



## STANDARD CORD / STEM / CANOPY FINISHES

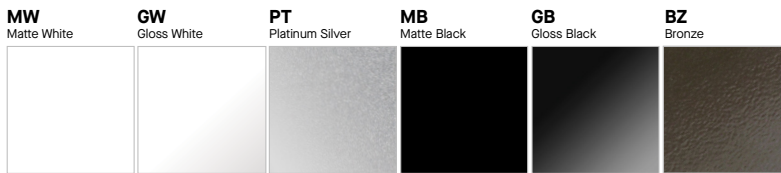
FIXTURE COLOR	STANDARD CORD COLOR	STANDARD CANOPY / STEM COLOR
Matte White, Textured White	Matte White	Matte White
Gloss White	Matte White	Gloss White
Matte Black, Gloss Black, Textured Black	Matte Black	Matte Black
All Others	Matte Black	Same Color as Fixture
Custom Color	Contact Factory	Contact Factory

## PAINT TIMES

TIER	COST	AVERAGE PAINT TIME*
Tier 1 - Standard Finishes	\$	⓪
Tier 2 - Typical Finishes	\$\$	⓪⓪
Tier 3 - Special Metal Finishes	\$\$\$	⓪⓪⓪
Custom Color	Contact Factory	Contact Factory

\*CONTACT FACTORY FOR SPECIFIC PRODUCT LEAD TIMES

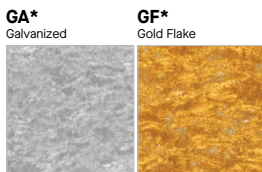
## TIER 1 - STANDARD FINISHES



## TIER 2 - TYPICAL FINISHES



## TIER 3 - SPECIAL METAL FINISHES



## CUSTOM COLOR FINISHES

CONTACT FACTORY

**CC**  
Custom Color



\*UNAVAILABLE FOR WET LOCATION

